

Canon

Delighting You Always

CHIA

www.chiacolorlab.com
เชียงใหม่ 074-246808



PIXMA

Quality. Promised.

Canon

Delighting You Always

SOUTH & SOUTHEAST ASIA REGIONAL HEADQUARTERS

CANON SINGAPORE PTE. LTD.

1 HarbourFront Avenue #04-01 Keppel Bay Tower
Singapore 098632
Tel: 65-6799 8888 Fax: 65-6799 8882
www.canon-asia.com

CANON OFFICES

INDIA:

Canon India Pvt. Ltd.
Tel: 91-124-4160 000
Fax: 91-124-4160 011
www.canon.co.in

THAILAND:

Canon Marketing (Thailand)
Co. Ltd.
Tel: 66-2-3449 999
Fax: 66-2-3449 988
www.canon.co.th

MALAYSIA:

Canon Marketing (Malaysia)
Sdn. Bhd.
Tel: 603-7844 6000
Fax: 603-7845 0505
www.canon.com.my

VIETNAM:

Canon Marketing Vietnam
Co., Ltd.
Ho Chi Minh City
Office & Showroom
Tel: 84-8-3820 0466
Fax: 84-8-3820 0477
www.canon.com.vn

SINGAPORE:

Canon Singapore Pte. Ltd.
Tel: 65-6799 8888
Fax: 65-6799 8882
www.canon.com.sg

CANON BUSINESS PARTNERS

BANGLADESH:

J.A.N. Associates
Tel: 880-2-8611 444
Fax: 880-2-8610 410

MYANMAR:

Myanmar Golden Rock
International Co. Ltd.
Tel: 95-1-654810 to 17
Fax: 95-1-654820

BRUNEI:

Interhouse Company
Tel: 673-2-653 001
Fax: 673-2-653 003

NEPAL:

International Electronics Concern
(P) Ltd.
Tel: 977-1-4421 991
Fax: 977-1-4421 909

CAMBODIA:

i-Click (Cambodia) Pte. Ltd.
Tel: 855-23-996 638
Fax: 855-23-996 639

PAKISTAN:

MBM International
Tel: 92-21-3273 5322, 3272 7684
Fax: 92-21-3438 6308

INDONESIA:

P. T. Datascrip
Tel: 021-2922 6000
Fax: 62-21-6544 811-13
www.canon.co.id

SRI LANKA:

Metropolitan Computers (Pvt.) Ltd.
Tel: 94-011-2590 572 / 2590 582
Fax: 94-011-2590 583

MALDIVES:

SIMDI
Tel: 960-333 4421
Fax: 960-333 4424



Dealer's Stamp

INTRODUCING THE PIXMA PRO SERIES

PIXMA PRO-1 • PRO-10 • PRO-100



www.facebook.com/CanonPIXMA

Because its products are subject to continuous improvement, CANON reserves the right to modify product design and specifications without notice and without incurring any obligations.

0172W324

PIXMA
Quality. Promised.



PRO PRINTERS	PIXMA PRO-1	PIXMA PRO-10	PIXMA PRO-100
PRINT RESOLUTION	4800 Maximum dpi	4800 Maximum dpi	4800 Maximum dpi
PHOTO PRINT SPEED (A3+ WITH BORDER, 11x14" IMAGE)	approx. 2 min. 55 sec. Color	approx. 3 min. 35 sec. Color	approx. 1 min. 30 sec. Color
CARTRIDGE SYSTEM	12 Single Inks LUCIA ink	10 Single Inks LUCIA ink	8 Single Inks ChromaLife 100+
CARTRIDGE TYPE	29 MBK, 29 PBK, 29 DGY, 29 GY, 29 LGY, 29 C, 29 PC, 29 M, 29 PM, 29 Y, 29 R, 29 CO	72 MBK, 72 PBK, 72 DGY, 72 GY, 72 LGY, 72 C, 72 PC, 72 M, 72 PM, 72 Y, 72 R, 72 CO	42 MBK, 42 PBK, 42 DGY, 42 GY, 42 LGY, 42 C, 42 PC, 42 M, 42 PM, 42 Y, 42 R, 42 CO
PAPER-FEEDING SYSTEM	2-way (Rear)	2-way (Rear)	2-way (Rear)
DVD / CD PRINT	Direct Disc Print	Direct Disc Print	Direct Disc Print
MAIN CONNECTIVITY	USB, Ethernet	USB, Wi-Fi CERTIFIED, Ethernet	USB, Wi-Fi CERTIFIED, Ethernet
DIRECT PRINTING	PictBridge	PictBridge	PictBridge
WIRELESS MOBILE PRINTING	—	Windows RT EPP, iPhone iEPP, Android, AirPrint	Windows RT EPP, iPhone iEPP, Android, AirPrint
OTHER FEATURES	Full HD Movie Print, Fun Filter Effect, Chroma Optimizer, My Image Garden*, Print Your Days, Print Studio Pro*	Full HD Movie Print, Fun Filter Effect, Chroma Optimizer, My Image Garden, Print Your Days, Print Studio Pro	Full HD Movie Print, Fun Filter Effect, My Image Garden, Print Your Days, Print Studio Pro

* Not available on installation CD and must be downloaded separately.

PIXMA PRO-1

FOR THE TRUE ARTIST



12-COLOR LUCIA INK SYSTEM WITH 5 MONOCHROME INKS



Photo Print Speed

approx.
2 min. 55 sec.
Color
A3+ Bordered 11x14" image

- First PIXMA PRO Printer with 5 Monochrome Inks for superb grayscale prints
- 12-Color LUCIA Ink System
- Chroma Optimizer
- Prints up to A3+ size
- Supports a wide variety of Fine Art & Glossy Papers
- Large Individual Ink Tanks

4^{dots} 4800 dpi | 12 Single Inks | A3+ / 14x17" | LUCIA ink | Chroma Optimizer

Ethernet | Print Studio Pro* | My Image Garden* | Full HD Movie Print | Fun Filter Effect | Direct Disc Print

USB | PictBridge

* Not included on installation CD. Requires internet connection during installation.

NEW

PIXMA PRO-10

WHEN EVERY DETAIL COUNTS



WIRELESS PROFESSIONAL PHOTO PRINTER WITH 10-COLOR LUCIA INK SYSTEM DELIVERS PROFESSIONAL-QUALITY PRINTS

- Vibrant colors with smooth tonal gradations
- 10-Color LUCIA Ink System with 3 Monochrome Inks
- Chroma Optimizer
- Connectivity: Supports Wi-Fi, AirPrint™ and Mobile Printing
- Prints up to A3+ size
- Supports a wide variety of Fine Art & Glossy Papers
- Print Studio Pro plug-in software for streamlined workflow



Photo Print Speed

approx. **3 min. 35 sec.** Color
A3+ Bordered 11x14" image



NEW

PIXMA PRO-100

OBSERVE EVERY COLORFUL DETAIL



WIRELESS PROFESSIONAL PHOTO PRINTER WITH 8-COLOR DYE INK SYSTEM FOR COLORFUL AND VIVID PRINTS

- Exceptionally vibrant & vivid colors
- 8-Color Ink System with 3 Monochrome Inks
- Smoother gradation & suppressed graininess
- Connectivity: Supports Wi-Fi, AirPrint™ and Mobile Printing
- Prints up to A3+ size
- Supports a wide variety of Fine Art & Glossy Papers
- Print Studio Pro plug-in software for streamlined workflow

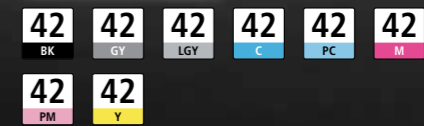
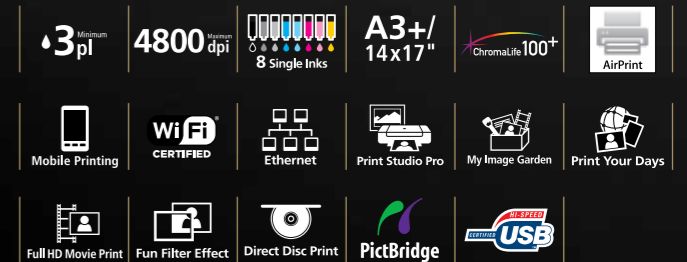


Photo Print Speed

approx. **1 min. 30 sec.** Color
A3+ Bordered 11x14" image



KEY TECHNOLOGIES



OPTIMUM IMAGE GENERATION (OIG) SYSTEM†

The Key to Achieving Accurate Prints

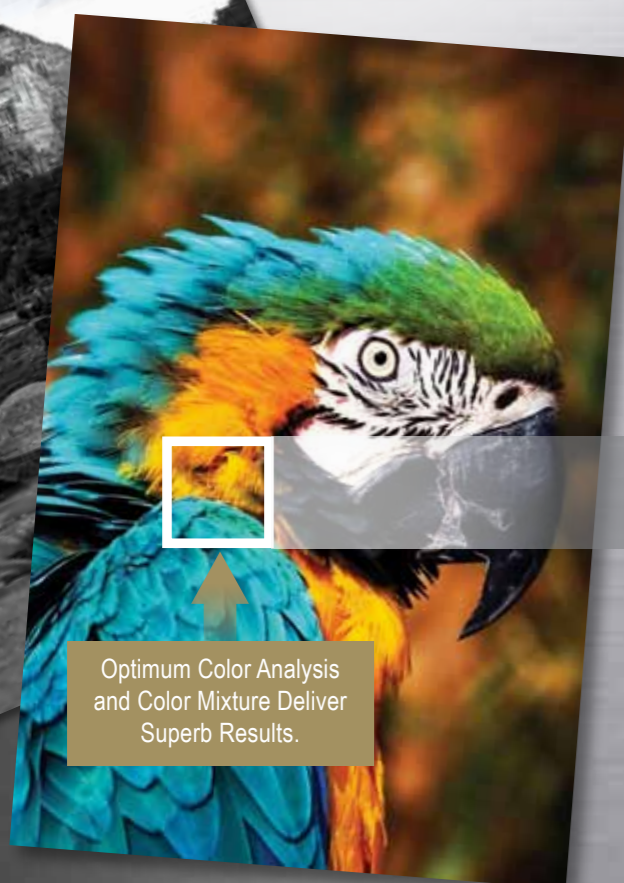
The Optimum Image Generating (OIG) System† utilizes two major technologies implemented in the PIXMA PRO-1 & PRO-10 Professional Inkjet Printers.

The first is a sophisticated mixing balance of inks determined from numerous ink combinations and advanced analysis. During this analysis, the OIG System carefully calculates the best results for each print mode and paper type used while looking at various image factors including color reproduction, tonal gradations, black density, low graininess, glossiness, anti-bronzing and anti-metamerism.

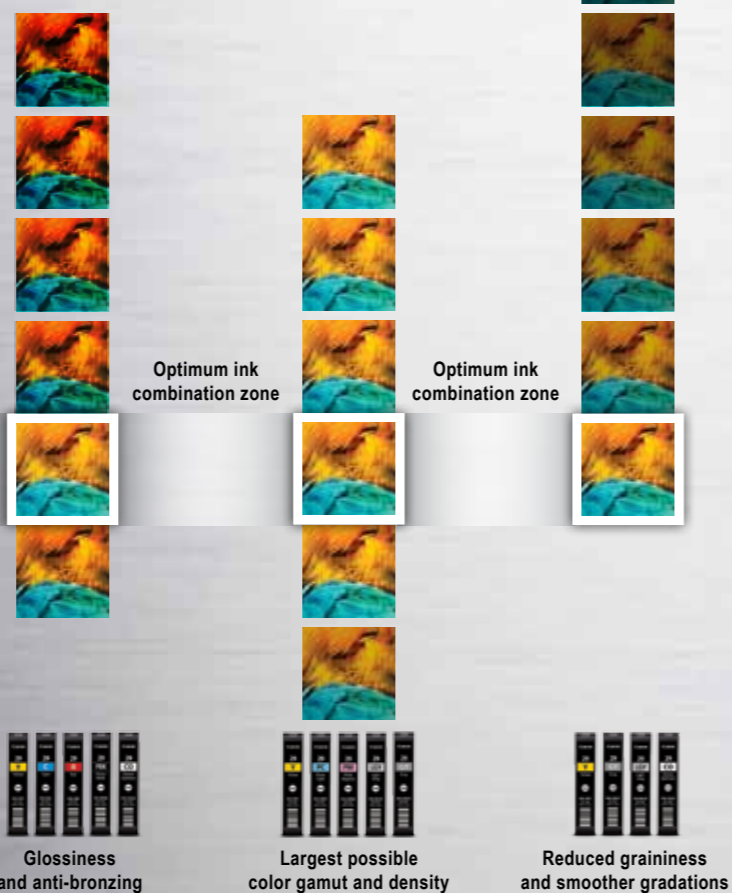
These critical ink balancing principles are derived from Canon's expertise in imaging technology, as well as the familiar colors of life that people see and remember on a daily basis.

The second is the precise placement of ink droplets that is significant for the ideal print results.

† OIG System in PIXMA PRO-100 works on color reproduction, tonal gradations, black density, graininess and metamerism.



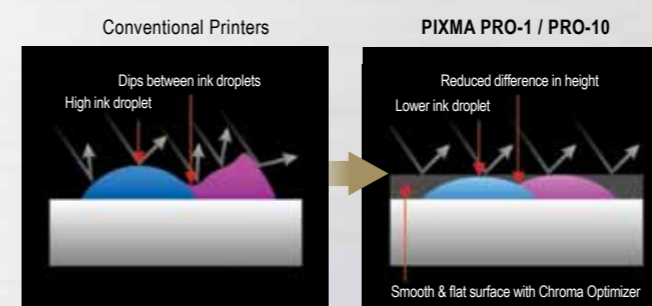
Optimum Color Analysis and Color Mixture Deliver Superb Results.



CHROMA OPTIMIZER

Chroma Optimizer* is a critical element to attaining professional print quality with accurate color and reduced metamerism on coated papers. Chroma Optimizer reduces the difference in ink droplet height to form a flat and smooth ink layer. The result is evenly reflected light, deep blacks and bright, saturated colors.

* Not applicable to PIXMA PRO-100



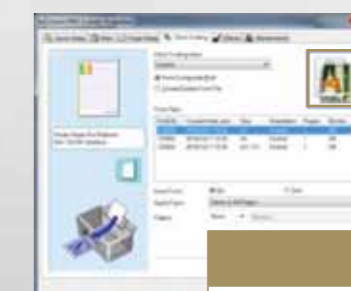
Limited variety of black and gray inks leading to prints that lack strength in the crucial shadow areas; Details can suffer due to increased graininess.



Delivers refined photo prints that contain greater detail in darker areas and higher overall black density.

Decorative Effects

Chroma Optimizer can also be used to create subtle decorative effects. There is a noticeable difference between areas coated with Chroma Optimizer and those not coated. For instance, you could create a textured pattern on a print or have your signature appear as a "watermark" on your photos.



	Invert Form: No	Invert Form: Yes
Pattern: None		
Pattern: Apply		



SOFTWARE

NEW PRINT STUDIO PRO

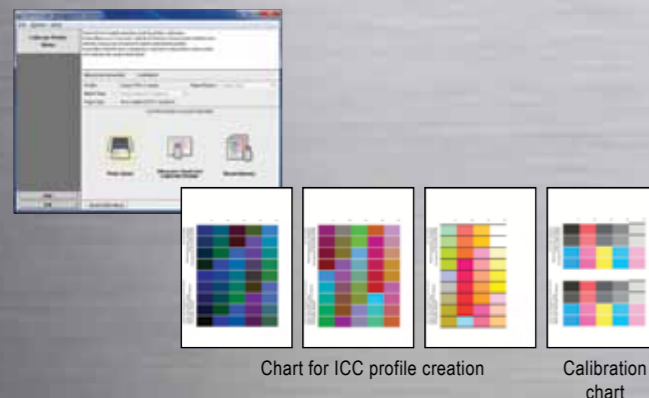
This powerful plug-in software provides professional photographers with effective printing solutions. It offers well-organized color management settings and facilitates simple and seamless photo printing from Digital Photo Professional, Adobe Photo Professional, Adobe Photoshop®, Adobe Photoshop Lightroom® and Adobe Photoshop Elements®.



COLOR MANAGEMENT TOOL PRO

Color Management Tool Pro has capabilities of calibration and ICC profile creation. The Color Management Tool Pro is available with the color management tools from X-Rite, i1 Pro without UV Cutoff filter, i1 Pro with UV Cutoff filter and ColorMunki Photo/Munki Design.

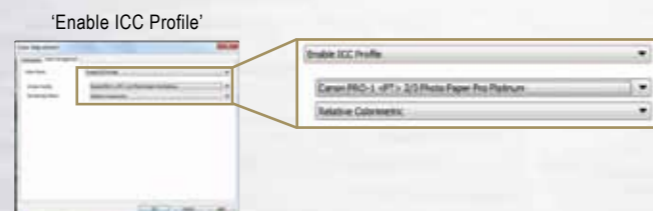
* PIXMA PRO-100 does not support the printer calibrating function.



COLOR MODES

ICC Profile

This setting faithfully prints to the characteristics of various media. It also prints images in the Adobe® RGB (1998) color space through the use of Print Studio Pro. The color conversion used in the “Perceptual” rendering intent under the “Use ICC Profile” mode has been improved in the PIXMA PRO-10 and PRO-100 to create a print that is closer to what is viewed on the monitor.



Linear Tone

This mode prints the image in its truest form. It reflects the results of image adjustment where the gradation balance is maintained in good order.



Photo Color

This mode prints an improved and adjusted image by enhancing colors based on human perception.



NEW PRO Mode

This mode helps to map the color gamut for optimum balance of brightness and saturation, based on the display. It also will help adjust the color by reflecting the characteristics of human perception for better color adaption and an equal hue plane.



PRINTING SOLUTION

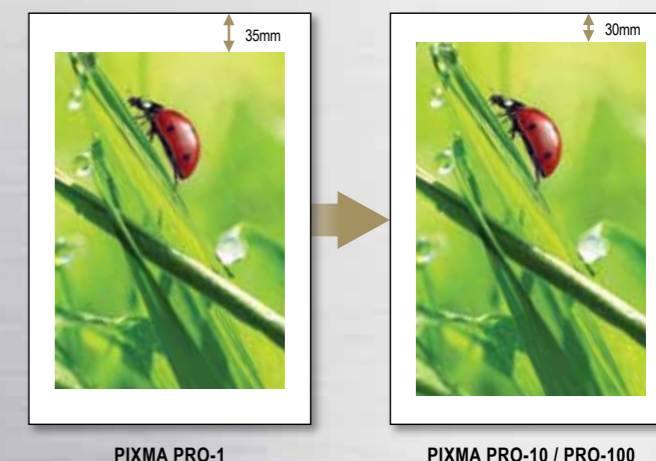
VERSATILE PAPER HANDLING

PIXMA PRO printers support professional photo printing on a variety of FINE Art and Glossy Photo Papers. Two-way paper feeding provides a rear tray for most supported media types, and a dedicated manual feed at the back of the printers for easy loading of thicker paper and larger sizes – such as 14x17” and A3+.



BOOSTING PRODUCTIVITY AND ENHANCING AESTHETICS

PIXMA PRO printers are now even faster, boasting a significant increase in output speeds over previous PIXMA PRO models. In addition, the margin area for fine-art paper has been improved. It is reduced from 35mm to 30mm for more aesthetically pleasing prints.



CONNECTIVITY

When it comes to connectivity, PIXMA PRO Printers offer a range of convenient choices.



AirPrint™

Print photos, emails, web pages and documents wirelessly, without the need to install device drivers - making it a seamless experience.

Note: Supports ISO devices only

Wi-Fi / Ethernet

The PIXMA PRO-10 and PIXMA PRO-100 have built-in Wi-Fi and Ethernet networking capabilities. This allows multiple users to seamlessly print from several networked computers and even mobile devices.

* PIXMA PRO-1 supports Ethernet connectivity only.

THE PERFECT FINISH

Get the most out of your PIXMA printer – pair it with Canon's extensive range of paper media, from super high gloss photo paper to photo stickers.

PHOTO PRINTING

<p>PT-101 Photo Paper Pro Platinum (Super High Gloss) • 300g/m² • 4x6", A4, A3, A3+</p>	<p>PP-201 Photo Paper Plus Glossy II • 275g/m² • 4x6", A4, A3, A3+</p>	<p>LU-101 Photo Paper Pro Luster • 260g/m² • A4, A3, A3+ NEW</p>	<p>GP-501 Glossy Photo Paper* • 170g/m² • 4x6", A4</p>	<p>SG-201 Photo Paper Plus Semi-Gloss • 260g/m² • 4x6", 8x10", A4, A3, A3+</p>
---	--	---	--	--

SPECIAL PROJECTS

<p>MP-101 Matte Photo Paper • 170g/m² • 4x6", A4, A3</p>	<p>TR-301 T-Shirt Transfers • 143g/m² • A4</p>
--	--

FINE ART PAPER

<p>FA-ME1 Fine Art Paper Museum Etching • 350g/m² • A4, A3, A3+</p>

BUSINESS PRINTING

<p>HR-101N High Resolution Paper • 106g/m² • A4, A3, A3+</p>
--

PIXMA PRO-1 INK CARTRIDGES

PIXMA PRO-10 INK CARTRIDGES

PIXMA PRO-100 INK CARTRIDGES

SPECIFICATIONS



PRINT & PAPER HANDLING	PRO PRINTER		PIXMA PRO-1	PIXMA PRO-10	PIXMA PRO-100			
	Maximum Printing Resolution			4800 x 2400 dpi	4800 x 2400 dpi	4800 x 2400 dpi		
Print Head / Ink	Ink Tanks		12	10	8			
Print Speed	Photo (11x14" image on A3+ with Border)*1	Color PT-101	approx. 4min. 20sec.	approx. 5min. 20sec.	approx. 1min. 30sec.			
		Black & White PT-101	approx. 4min. 20sec.	approx. 5min. 20sec.	approx. 2min. 55sec.			
		Color PP-201	approx. 2min. 55sec.	approx. 3min. 35sec.	approx. 1min. 30sec.			
		Black & White PP-201	NA	approx. 5min. 20sec.	approx. 2min. 55sec.			
		Color SG-201	approx. 2min. 55sec.	approx. 3min. 35sec.	approx. 1min. 30sec.			
		Black & White SG-201	NA	approx. 5min. 20sec.	approx. 2min. 55sec.			
		Color LU-101	NA	approx. 3min. 35sec.	approx. 1min. 30sec.			
Black & White LU-101	NA	approx. 5min. 20sec.	approx. 2min. 55sec.					
Paper Handling	Rear Tray		Yes	Yes	Yes			
	Manual Feed Slot		Yes	Yes	Yes			
Printable Area	Borderless Printing*2		Up to A3+	Up to A3+	Up to A3+			
Disc Handling (Disc Tray)	Printable Disc		1 (Manual handling by disc tray)	1 (Manual handling by disc tray)	1 (Manual handling by disc tray)			
NETWORK / SYSTEM REQUIREMENTS & GENERAL SPECIFICATIONS	Windows	(Please visit www.canon-asia.com to check OS compatibility and download the latest driver updates)	Windows 8 / Windows 7 / Windows Vista / Windows XP	Windows 8 / Windows 7 / Windows Vista / Windows XP	Windows 8 / Windows 7 / Windows Vista / Windows XP			
	Macintosh		Macintosh OS X v10.5 and later	Macintosh OS X v10.5 and later	Macintosh OS X v10.5 and later			
	Interface		100 Base-TX/10 Base-T, USB 2.0 Hi-Speed, PictBridge	Wireless LAN IEEE 802.11 b/g/n, 100 Base-TX/10 Base-T, USB 2.0 Hi-Speed, PictBridge	Wireless LAN IEEE 802.11 b/g/n, 100 Base-TX/10 Base-T, USB 2.0 Hi-Speed, PictBridge			
	Acoustic Noise	Photo (4x6")*3	35.5dB(A)	33.9dB(A)	38.5dB(A)			
	Power		AC 100-240V, 50 / 60Hz	AC 100-240V, 50 / 60Hz	AC 100-240V, 50 / 60Hz			
	Power Consumption		approx. 24W*4 (1.6W Standby)	approx. 17W*4 (2.3W Standby)	approx. 19W*4 (2.3W Standby)			
	Dimensions (W x D x H)		approx. 695 x 462 x 239mm	approx. 689 x 385 x 215 mm	approx. 689 x 385 x 215 mm			
Weight		approx. 27.7kg	approx. 20.0kg	approx. 19.7kg				
PAGE YIELD	A3+ Color Photo Paper PT-101 (ISO/JIS-SCID N2 test file*5) (Pages)		PGI-29C: 230 PGI-29M: 281 PGI-29Y: 290 PGI-29PC: 400*5 PGI-29PM: 228 PGI-29R: 454*5	PGI-29MBK: 505*5 PGI-29PBK: 111 PGI-29DGY: 119 PGI-29GY: 179 PGI-29LGY: 352*5 PGI-29CO: 90	PGI-72C: 73 PGI-72M: 85 PGI-72Y: 85 PGI-72PC: 89*5 PGI-72PM: 69	PGI-72R: 144*5 PGI-72MBK: 202*5 PGI-72PBK: 44 PGI-72GY: 31 PGI-72CO: 31	CLI-42C: 58*5 CLI-42M: 48 CLI-42Y: 51 CLI-42BK: 65*5	CLI-42GY: 70*5 CLI-42LG: 111*5 CLI-42PC: 60*5 CLI-42PM: 37
	A3+ Monochrome Photo Paper PT-101 (ISO/JIS-SCID N2 MONO test file*5) (Pages)		PGI-29C: 640*5 PGI-29M: 750*5 PGI-29Y: 605*5 PGI-29PC: 253*5 PGI-29PM: 192*5 PGI-29R: 820*5	PGI-29MBK: 472*5 PGI-29PBK: 106 PGI-29DGY: 79 PGI-29GY: 138*5 PGI-29LGY: 115*5 PGI-29CO: 84	PGI-72C: 168*5 PGI-72M: 196*5 PGI-72Y: 205*5 PGI-72PC: 87*5 PGI-72PM: 75	PGI-72R: 216*5 PGI-72MBK: 217*5 PGI-72PBK: 35 PGI-72GY: 23 PGI-72CO: 29	CLI-42C: 478*5 CLI-42M: 493*5 CLI-42Y: 131*5 CLI-42BK: 48	CLI-42GY: 31 CLI-42LG: 23 CLI-42PC: 105*5 CLI-42PM: 53*5
	Photo 4x6" Photo Paper PT-101 (ISO/IEC 29103 test file*7) (Pages)		PGI-29C: 1800*5 PGI-29M: 1755*5 PGI-29Y: 1280 PGI-29PC: 1375 PGI-29PM: 1055 PGI-29R: 2460*5	PGI-29MBK: 1345*5 PGI-29PBK: 1225 PGI-29DGY: 670 PGI-29GY: 790*5 PGI-29LGY: 1320*5 PGI-29CO: 429	PGI-72C: 525*5 PGI-72M: 710*5 PGI-72Y: 377 PGI-72PC: 351 PGI-72PM: 303	PGI-72R: 1045*5 PGI-72MBK: 1640*5 PGI-72PBK: 510*5 PGI-72GY: 165 PGI-72CO: 165	CLI-42C: 600*5 CLI-42M: 416*5 CLI-42Y: 284 CLI-42BK: 900*5	CLI-42GY: 492*5 CLI-42LG: 835*5 CLI-42PC: 292 CLI-42PM: 169

Specifications are subject to change without notice.

*1 Photo print speed is based on the default setting using ISO / JIS-SCID N2 on Photo Paper Plus Glossy II and does not take into account data processing time on host computers. Print speed may vary depending on the system configuration, interface, software, document complexity, print mode, page coverage, type of paper used, etc.

*2 Paper types NOT supported for borderless printing are as follows: Envelope, High Resolution Paper, T-Shirt Transfer, Photo Stickers.

*3 When printing ISO / JIS-SCID N2 pattern on 4x6" Photo Paper Plus Glossy II using default settings.

*4 When printing ISO / JIS-SCID N2 pattern on A4 size Plain Paper using default settings.

*5 Estimate Supplemental Yield.

*6 When printing ISO / JIS-SCID N2 test file at 11x14" size continuously on A3+ Photo Paper Pro Platinum with the default settings of testing paper using Windows 7 printer driver and PhotoShop CS3.

*7 Declared yield value in accordance with ISO / IEC 29102 test file using ISO / IEC 29103 test file. Values obtained by continuous printing.

Note: All printers work in Operating Environment of Temperature: 5 - 35°C; Humidity: 10 - 90% RH (no dew condensation). All printers work in Storage Environment of Temperature: 0 - 40°C; Humidity: 5 - 95% RH (no dew condensation).

