



www.chiacolorlab.com
เจียคิลลอร์แลป 074-246808



Canon

Delighting You Always

Canon

SOUTH & SOUTHEAST ASIA
REGIONAL HEADQUARTERS

CANON SINGAPORE PTE. LTD.
1 HarbourFront Avenue,
#04-01 Keppel Bay Tower,
Singapore 098632

www.canon-asia.com

Errors and omissions excepted.
Images are simulated.
Weight and dimensions are approximate.
Subject to change without notice.
Macintosh is a trademark of Apple Computer Inc., registered in the
United States and other countries. Microsoft® and Windows® are
either registered trademarks or trademarks of Microsoft Corporation
in the United States and/or other countries. Wi-Fi is a trademark.
Other names and products not mentioned above may be registered
trademarks or trademarks of their respective companies. Canon is a
registered trademark of Canon Inc.

Warning: Unauthorized recording of copyrighted materials may infringe
on the rights of copyright owners and be contrary to copyright laws.

0171W691

f Canon EOS Asia

www.canon-asia.com/eos6d

CANON OFFICES:

MALAYSIA
Canon Marketing (Malaysia) Sdn. Bhd.
Tel : 603-78446000
Fax : 603-78450505
www.canon.com.my

SINGAPORE
Canon Singapore Pte. Ltd.
Tel : 65-6799-8888
Fax : 65-6799-8882
www.canon.com.sg

THAILAND
Canon Marketing (Thailand) Co. Ltd.
Tel : 66-2-3449999
Fax : 66-2-3449922
www.canon.co.th

VIETNAM
Canon Marketing Vietnam Co. Ltd.
Ho Chi Minh City
Office & Showroom
Tel : 84-8-382-00466
Fax : 84-8-382-00477

Hanoi
Tel : 84-4-377-11677
Fax : 84-4-377-11678
www.canon.com.vn

CANON BUSINESS PARTNERS:

BANGLADESH
J.A.N. Associates
Tel : 880-2-8611444
Fax : 880-2-8610410

BRUNEI
Interhouse Company
Tel : 673-2-653001
Fax : 673-2-653003

CAMBODIA
i-Click (Cambodia) Pte. Ltd.
Tel : 855-23-996638
Fax : 855-23-996639

INDONESIA
P.T. Datascrip
Tel : 62-21-2664-8999
Fax : 62-21-6544811-13
www.canon.co.id

MALDIVES
SIMDI Company Pvt. Ltd.
Tel : 960-324819
Fax : 960-318433

MYANMAR
Myanmar Golden Rock
International Co. Ltd.
Tel : 95-1-202092/3/4
Fax : 95-1-202079

NEPAL
Primax International Inc.
Tel : 977-1-4224079
Fax : 977-1-4429358

PAKISTAN
MBM International
Tel : 92-21-32277093
Fax : 92-42-37530948

SRI LANKA
Metropolitan Office Pvt. Ltd.
Tel : 94-011-2590572/2590582
Fax : 94-011-2590583



FULL FRAME
PROWESS

The New EOS 6D.
Within Reach. Without Limits



EOS 6D

EOS 6D

The Spirit of EOS. The Promise of Amazing Photography.

Power, Beauty and Intelligence. The new EOS 6D is everything we have longed for expressed in one exceptional camera. An innovative 20.2-megapixel full-frame DSLR in one unbelievably compact size and a lightweight 680g, the new EOS 6D is in an unparalleled class of its own.

Embodying the ideal shooting performance, the EOS 6D delivers results of such stunning clarity, smooth tonality and rich details that are made only possible by its full-frame sensor. Then, the EOS 6D raises the stakes by being an EOS first with its amazing built-in Wi-Fi and GPS support* that enable an unprecedented instant sharing and wireless shooting capabilities.

*Subject to availability in your region.

● NEXT STOP:
The Full-Frame Advantage

FULL FRAME
PROWESS

The New EOS 6D.
Within Reach. Without Limits

THE FULL-FRAME ADVANTAGE

NEXT STOP:
Built-In Wireless LAN

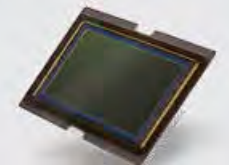
Shooting with a full-frame sensor maximizes the full potential of the high-performance range of EF lenses, especially wide-angle lenses, as the angle of view remains the same. Besides breathtaking wide-angle photography, a full-frame camera produces perfect image quality synonymous with its large sensor.

A larger sensor also houses larger pixels with stronger light-gathering capabilities for a wider dynamic range and higher signal-to-noise ratio. As a result, full-frame cameras tend to perform better in high-contrast or severe low-light conditions.

Therefore it comes as no great wonder that the prestige of shooting with a full-frame camera has always been associated with the elite pro photographers all over the world. No longer.

SUPERIOR 20.2-MEGAPIXEL FULL-FRAME CMOS SENSOR

Bringing the privilege of high-end full-frame DSLR cameras to the advanced amateur class is the new EOS 6D with its 20.2-megapixel full-frame CMOS sensor. Sporting a new photodiode construction and gapless microlens array for higher signal-to-noise ratio and wide dynamic range, the EOS 6D performs on par with top-range DSLR cameras to deliver excellent image quality even in challenging low-light conditions.



20.2-Megapixel Full-Frame CMOS Sensor



EXTENSIVE ISO SPEED RANGE

An impressive trait that the new EOS 6D has inherited from the top-range EOS 5D Mk III is its substantial ISO speed range of 100-25600 which is expandable to L for ISO 50, H1 for ISO 51200 and H2 for ISO 102400. While the standard ISO range of ISO 100-25600 suffices for studio photography and movie shooting, the additional ISO settings make the EOS 6D adaptable to a wide range of variously lit shooting environments.



ISO 100

ISO 25600



BUILT-IN WIRELESS LAN

Making its debut with the new EOS 6D is the built-in wireless LAN (Wi-Fi) function that introduces a whole new form of communication through photography. This independent attribute of the EOS 6D makes it ideal for shutterbugs on the go, as it performs a host of wireless functions never before enabled on an EOS DSLR camera.

NEXT STOP:
Built-In GPS Function



SHARE GOOD THINGS INSTANTLY

It is such a breeze to point, shoot and share using wireless file transfer to different devices. Still images can be transferred from the EOS 6D to Canon cameras and smartphones equipped with built-in wireless LAN function. It also allows images to be streamed and viewed on DLNA-certified media players.

In a greater scope, the EOS 6D can further upload still images and videos to popular social networking sites such as YouTube, Facebook, and Twitter via the CANON IMAGE GATEWAY [CiG]*. Images can even be resized in the EOS 6D before uploading to respective sites.



Upload still images and videos to networking sites such as YouTube, Facebook, and Twitter



EOS REMOTE APPLICATION

A touch to release the camera's shutter and capture your photo from a distance

Another EOS first that is premiered along with the built-in wireless LAN function is the new EOS Remote application for both iOS and Android platforms. In the most exemplary demonstration of the EOS 6D's Wi-Fi capabilities, the EOS Remote application is able to control the EOS 6D as it doubles as the camera's Live View screen.

With the EOS Remote app, photographers are empowered to adjust settings, check focus and even shoot from their smartphones, just like how they would with the camera. Reviewing, playback, organising, rating, deleting and saving images with just a touch on their smartphones are also possible while staying connected wirelessly with the EOS 6D.

CABLE-FREE CONTROL & PRINTING

The EOS 6D can also be remotely controlled through the EOS Utility software on a computer via wireless LAN connection. Major camera operations that are accessible using EOS Utility can be performed remotely without an interface cable.

This simple cable-free advantage is even carried over to printing captured images with compatible Wi-Fi printers** supporting DPS over IP, without the need for a computer.

*Wireless LAN/GPS and CiG supports are subjected to availability in your region
**Photos are transmitted to a printer via either Infrastructure Mode or Camera Access Point Mode



Print directly from your camera through Wi-Fi

BUILT-IN GPS FUNCTION

Further raising the profile of the EOS 6D as the roaming photographer's ideal shooting companion is the inclusion of a built-in GPS function. This highly sensitive and precision-calibrated GPS reception unit immediately receives signals from GPS satellites even in weak reception conditions.



LOCATION: 201 VARICK ST, USA
LATITUDE: 40.728283
LONGITUDE: -74.006073
TIME: 10:07 HRS



LOCATION: BROOKLYN BRIDGE, USA
LATITUDE: 40.7045096000000000
LONGITUDE: -73.994805499999980000
TIME: 14:02 HRS

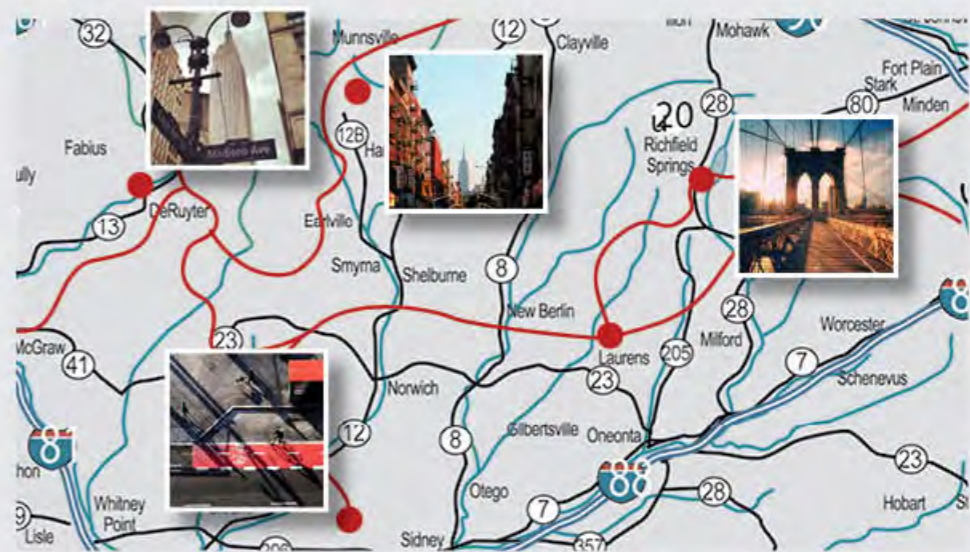


TAGGING GPS INFORMATION TO IMAGES

Upon starting up the EOS 6D or shooting a photo, the built-in GPS function appends location data such as latitude, longitude, elevation, as well as time and date stamps, to the image file. This handy feature allows photographers to recall shooting locations while on the move, and an entire route can later be tracked and documented using the Map Utility software.



The built-in GPS function appends location data such as latitude, longitude, elevation, as well as time and date stamps, to the image file.



Allows photographers to recall shooting locations while on the move, and an entire route can later be tracked and documented.

GPS LOGGING FUNCTION

Active even with the camera power turned off, the GPS Logger records the longitude, latitude, elevation, direction, and coordinated universal time to the EOS 6D while the photographer is travelling. This automatic function logs position information at set intervals for highly accurate mapping, and log files can be imported or deleted.

AUTO TIME SYNCHRONIZATION

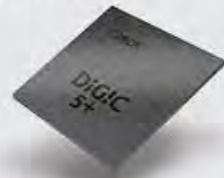
The EOS 6D's clock is synchronized with the GPS satellite's atomic clock, and the time is automatically updated the moment the camera is turned on and the satellite signal is received. Accuracy is approximately ± 1 second and the time zone can be set to compatible areas.

AN ALL-STAR PERFORMANCE



ENHANCED DIGIC 5+ IMAGING PROCESSOR

The indispensable companion to the full-frame CMOS sensor is its upgraded DIGIC 5+ imaging processor performing at three times the speed of the previous DIGIC 5. This dream pairing enables the new EOS 6D to effortlessly produce high-clarity images with super fine details at high ISO speeds since noise processing has been improved by up to 2 stops.



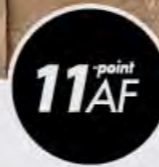
Supporting an accelerated continuous shooting speed of 4.5 frames per second, the imaging processor nonetheless maintains noise reduction without affecting continuous shooting speeds. The DIGIC 5+ imaging processor is also behind the newer features of the EOS 6D such as the Special Scenes mode, Multi-Shot Noise Reduction, and HDR mode among others.



SUPER-CHARGED 4.5 FPS CONTINUOUS SHOOTING

Shooting without a hitch at blazing continuous high-speeds is a given with the EOS 6D, thanks to the 4-channel readout from its 20.2-megapixel full-frame CMOS sensor powered by the tireless DIGIC 5+ imaging processor.

Key to the EOS 6D's top-notch rapid-fire shooting performance includes the twin-motor setup with dedicated high-speed motors for the mirror drive and shutter charge. The entire drive system contributes to the EOS 6D's lightweight design by sporting a more compact motor. Maximum bursts during continuous shooting are approximately 73 shots in Large/Fine and 17 shots in RAW format.



11-POINT AUTO FOCUSING SENSOR

Newly developed for the EOS 6D is its 11-Point Auto Focusing Sensor with the centre AF point performing cross-type focusing at $f/5.6$ and vertical line-sensitive focusing at $f/2.8$. Other auto focus points are for horizontal line-sensitive focusing at a maximum aperture of $f/5.6$.



AF Sensor



AF 11-Points

The EOS 6D's unparalleled low-light sensitivity is made possible by the improved pixel configuration of the AF sensor and broader light-receptive area of the central AF point. The EOS 6D is able to focus up to EV-3, which is one stop darker than the normal AF metering range found in other EOS DSLRs.



iFCL 63-ZONE DUAL-LAYER METERING SYSTEM

Optimized to work in tandem with the 11-Point Auto Focusing Sensor, the iFCL Dual-Layer Metering System with 63-zone, dual-layer metering sensor enables evaluative, partial, spot, and center-weighted average metering. To avoid the common issue of underexposure when shooting subjects with dominant red colors, the metering sensor measures light with one layer sensitive to red-green wavelengths and a second layer sensitive to blue-green wavelengths.



Without AF information



With AF information



Without color information



With color information



TIMES SQUARE
NEW YORK, USA

350 ST, 5TH AVENUE
NEW YORK, USA



CENTRAL PARK
NEW YORK, USA



32 ST, 7TH AVENUE
NEW YORK, USA



350 ST, 5TH AVENUE
NEW YORK, USA

Track the intrepid EOS 6D's journey out and about in the great bustling city of New York!

The wandering photographer's route is recalled by pinpointing the images captured to its specific location, thanks to the brilliant built-in GPS function.



LIBERTY ST & BROADWAY
NEW YORK, USA



WALL STREET
NEW YORK, USA



BROOKLYN BRIDGE
NEW YORK, USA



CHINATOWN
NEW YORK, USA



BROOKLYN BRIDGE
NEW YORK, USA

MAKING MOVIE MAGIC



LIVE VIEW SHOOTING

Inspired by the EOS 5D Mark III, the new EOS 6D similarly has the Live View/Movie shooting switch integrated with the Start/Stop button, located near the viewfinder on the right side. Besides the easy shift between Live View shooting and Movie shooting, the quality of the EOS 6D's videos have largely improved with the reduction of moiré and color fringing.

EXTRAORDINARY EOS MOVIE

Driven by the industrious DIGIC 5+ imaging processor, the EOS 6D smoothly records videos in Full HD quality with high resolutions of up to 1920 x 1080 at 24/25 frames per second. Conforming to industry standards for professional movie-editing workflow, the EOS 6D supports both inter frame, iPB compression method, and intra frame ALL-I compression method. IPB compresses frames in groups to result in a smaller file size, while ALL-I compresses each frame for easier editing but generates a larger file.

The time code can also now be set and recorded. Movie recording is no longer limited to a 4GB movie file size, and each movie clip can be shot up to 29 minutes 59 seconds depending on memory card capacity.



BUILT-IN MICROPHONE

The EOS 6D is equipped with a built-in microphone that records 18-bit monaural sound with the recording volume adjusted automatically. A wind filter feature and automatic reduction of aperture operating noise also aids in toning down the recording of operation sounds.

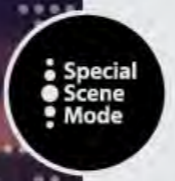


PLAYBACK & EDITING

Movies recorded on the EOS 6D can be played back on the camera or on a television using the HDMI or AV cable connection. The volume of the camera's built-in speaker can be adjusted to one of ten levels. During playback, the EOS 6D allows editing out the first and last scenes of the movie in one-second increments. The edited movie can then be saved as a separate file or to overwrite the original file.



IN PURSUIT OF PERFECTION



SPECIAL SCENE MODE

Premiering on the EOS 6D's Mode Dial is the new Special Scene (SCN) shooting mode as part of the Basic Zone for straightforward creative shooting with the camera helping things along. Seven modes are available in Special Scene mode; Portrait, Landscape, Close-up, Sports, Night Portrait, Handheld Night Scene, and HDR Backlight Control.



Portrait Landscape Close-Up Sports Night Portrait

• Handheld Night Scene

Four shots are taken consecutively at a fast shutter speed to avoid camera shake. The images are then merged and aligned in-camera automatically. This mode enables photographers to shoot night scenes without using a tripod.

• HDR Backlight Control

Three shots are taken continuously at a decreased, standard, and increased exposure. The three shots are then merged and automatically aligned in-camera, resulting in an image with minimal loss of highlights and shadow detail, even in backlit conditions.



EOS SCENE INTELLIGENT AUTO

A highly perceptive and intelligent system is incorporated in the EOS 6D to automatically analyze the conditions of a scene and gather information based on the subject's face, color, brightness, movement, contrast, and distance. The system then sends the information to related features such as Picture Style Auto, Auto White Balance, Auto Lighting Optimizer, Auto Focus, and Auto Exposure.



IN-CAMERA RAW IMAGE PROCESSING

Photographers are able to shoot RAW images with the EOS 6D, and process them in-camera before saving them as JPEG format images. The settings for RAW image processing include brightness adjustment, white balance, Auto Lighting Optimizer, noise reduction at high ISO speeds, peripheral illumination correction, distortion correction, and chromatic aberration correction.

The EOS 6D is able to store up to 40 different lens data for peripheral illumination correction that removes the vignette effect that sometimes appears around the edges of images. Once RAW files have been processed and duly converted to JPEG, they can be resized in-camera to an optimal size.



Vignetting Peripheral illumination correction

AUTO LIGHTING OPTIMIZER

The EOS 6D collates data from the camera's EOS Scene Detection System to automatically adjust brightness and contrast levels for optimal brightness and exposure in captured images. Compensation to appropriate brightness is performed for underexposed or low contrast images taken under various conditions including sunset scene, high-saturation scene, and scenes with highlights.

HIGHLIGHT TONE PRIORITY

By extending the dynamic range in highlight areas, the Highlight Tone Priority function gives captured subjects improved and more realistic color rendition. Overexposed sections are reduced and tones from greys to highlights are richly depicted to prevent images from appearing washed out when shooting in bright environments.



HIGH DYNAMIC RANGE MODE

Shooting in HDR mode captures scenes in literally whole new lights by merging three images of different exposures into a single vivid and beautifully detailed image.

By photographing the same scene in one underexposed shot, one standard exposure shot, and one overexposed shot, the subtle gradations in shadowy areas and highlights in brighter spots are all captured. The resulting merged image displays a rich contrast and expressive details seldom found in conventional shots.



Overexposed shot Standard Exposure Shot Underexposed Shot Final Merged Image



MULTIPLE EXPOSURES MODE

Yet another neat feature inherited from top-range full-frame cameras is the Multiple Exposures shooting mode. Photographers can shoot two to nine exposures to create a single multiple-exposure image with a possibly surreal and artistic outcome.

In the EOS 6D, the exposure level for Multiple Exposures modes are adjustable to either Additive or Average. In Additive setting, total exposure amount is added up as the multiple exposures are captured. Average setting automatically underexposes each multiple exposure to attain a more balanced exposure in the final image.



Additive Final Image

THE SMOOTH OPERATOR



3:2 WIDE
7.7cm / 3.0" LCD
ClearView

LCD MONITOR

Nothing escapes the eye with the 3.0-inch Clear View LCD monitor emphasized by approximately 1.04 million dots resolution and a wide viewing angle of 160°. An improved anti-reflection agent allows the LCD monitor to be viewed in a more natural manner and the monitor brightness can be adjusted to one of seven levels.



Intelligent
Viewfinder

HIGHLY ACCURATE VIEWFINDER OPTICS

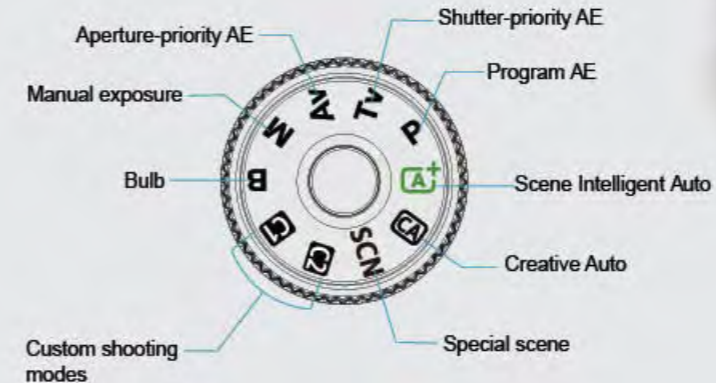
To precisely capture your composition, the EOS 6D comes with a carefully crafted glass pentaprism optical viewfinder offering 97% coverage, 33.3° angle of view and 0.71x magnification.



MODE DIAL

Tailored for the advanced amateur photographer learning on the go, the Mode Dial has been conveniently divided into progressive sections for each level of user. In Auto Mode, leave it to the EOS 6D to determine settings with Scene Intelligent Auto. Users can also experiment with the Creative Auto and Special Scene modes for creative freedom with a little help from the camera.

Moving on from the basic shooting modes, the advanced shooting modes allow greater degree of control and customized settings (P, Tv, Av, M, B, C1, C2). The Mode Dial can be rotated a full 360° for quick and unrestricted selection of shooting modes.



360°
Full 360° for quick and unrestricted selection of shooting modes



TOUGHNESS THROUGH AND TRUE



NEW!

LIGHTWEIGHT CHAMPION



Retaining the winning formula of a magnesium alloy housing, the new EOS 6D still manages to be the world's lightest* full-frame DSLR camera, thanks to a little engineering ingenuity.

Born of the new design philosophy of utter simplicity, the EOS 6D's fluid form, lightness and high tensile strength still manage to depart a comforting weight of a top-range professional DSLR. The new EOS 6D measuring at a mere 680g in weight is not only lighter than the 5D Mark III, but also smaller in size.

*Based on Canon findings, as of 13 September 2012

PROOFED AGAINST THE ELEMENTS

Thorough and extensive sealing against harsh weather and severe environments, the EOS 6D is dust- and moisture-proof for top-notch performance in unpredictable shooting conditions.

LONG-LASTING SHUTTER DURABILITY



The EOS 6D's highly durable shutters have been put through their paces and proven worthy with an impressive 100,000* cycles. The delicate yet strongly rigid shutter blades are capable of speeds from 1/4000 of a second up to 30 seconds.

*The shutter unit has passed a release test of 100,000 actuations (The test was conducted internally and based on standard shooting conditions)

EOS INTEGRATED CLEANING SYSTEM

Inheriting the Self-Cleaning Sensor Unit from the much acclaimed EOS-1D X, the optimized version for the EOS 6D utilizes ultrasonic vibration to remove dust particles which are absorbed at the bottom of the unit. The cleaning unit is completely sealed for protection against external impurities.

A MATCH WELL MADE

OPTIONAL BATTERY GRIP



Lending the new EOS 6D an added edge is the optional BG-E13 battery grip which is specifically designed for the EOS 6D in both portraiture and landscape shooting. The BGE13 battery grip holds two LP-E6 batteries or six AA batteries for double the shooting time. Its curved form and easy-to-grip surface even relieves strain from long handling during shooting.

EF24-70mm f/4L IS USM

Flaunting exceptional mechanical and optical quality, the EF24-70mm f/4L IS USM is a high-performance standard zoom lens that maintains high image quality throughout its zoom range by using two aspherical lens elements and two UD lens elements. Image quality is further improved with lens coating optimization for reduced ghosting, while a 9-blade circular aperture creates pleasing background blur.



A ring ultrasonic motor (USM) and inner focusing allows for silent and responsive auto-focusing, and the lens features a full-time manual focus. The Image Stabilizer (IS) feature achieves the equivalent effect of shutter speed up to four stops faster, and the Hybrid IS function even provides effective image stabilization during macro shooting.

Setting the zoom ring to macro at the telephoto end allows for full-fledged macro shooting. This makes close-up shooting possible at a minimum focusing distance of 0.2 m/0.66 ft. when set to macro (working distance of 3 cm/1.18 in.) and maximum magnification of 0.7x.

Superbly built, this compact and lightweight lens proves a hardy shooting accessory in tough shooting environments with its lens surfaces protected by a fluorine coating to prevent dust adhesion. A zoom ring lock is equipped to prevent the lens from extending when being transported.



Magnification 0.7x (macro shooting)

NOMENCLATURE OF EOS 6D



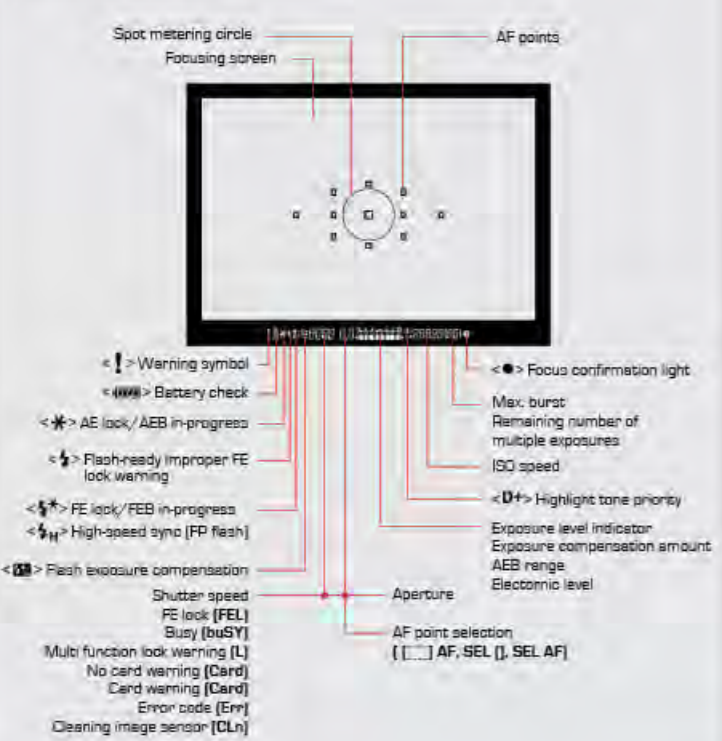
SPECIFICATIONS

TYPE	Digital, single-lens reflex, AF/AE camera
Recording media	SD memory card, SDHC memory card*, SDXC memory card* * Compatible with UHS-I
Image sensor size	Approx. 22.3 x 14.9 mm
Compatible lenses	Canon EF lenses (except EF-S and EF-M lenses) (35 mm-equivalent focal length will be as indicated on the lens) Canon EF mount
IMAGE SENSOR	
Type	CMOS sensor
Effective pixels	Approx. 20.2 megapixels
Aspect ratio	3:2
Dust delete feature	Auto, Manual, Dust/Deletion Date appending
RECORDING SYSTEM	
Recording format	Design rule for Camera File System 2.0
Image type	JPEG, RAW (14-bit Canon original), RAW+JPEG simultaneous recording enabled
Recorded pixels	L (Large) : Approx. 20.0 megapixels (5472 x 3648) M (Medium) : Approx. 8.9 megapixels (2848 x 2432) S1 (Small 1) : Approx. 5.0 megapixels (2736 x 1824) S2 (Small 2) : Approx. 2.5 megapixels (1820 x 1280) S3 (Small 3) : Approx. 350,000 pixels (720 x 480) RAW : Approx. 20.0 megapixels (5472 x 3648) RAW+JPEG : Approx. 11.0 megapixels (4104 x 2736) S-Raw : Approx. 5.0 megapixels (2736 x 1824) Continuous, auto reset, manual reset
File numbering	Continuous, auto reset, manual reset
IMAGE PROCESSING DURING SHOOTING	
Picture Style	Auto, Standard, Portrait, Landscape, Neutral, Faithful, Monochrome, User Def. 1-3
White balance	Auto, Preset (Daylight, Shade, Cloudy, Tungsten light, White fluorescent light, Flash), Custom, Color temperature setting (Approx. 2800-10000K), White balance correction, and White balance bracketing possible * Flash color temperature information transmission enabled * Flash color temperature information transmission enabled
Noise reduction	Auto Lighting Optimizer Applies to long exposures and high ISO speed shots
Automatic image brightness correction	Auto Lighting Optimizer
High light tone priority	Provided
Low light color correction	Peripheral illumination correction, Chromatic aberration correction
VIEWFINDER	
Type	Eye-level pentaprism
Coverage	Vertical/horizontal approx. 87% (with eye point approx. 21 mm)
Magnification	Approx. 0.71x (1 m ⁻¹ with 50 mm lens at infinity)
Eye point	Approx. 21 mm from eyepiece lens center at 1 m ⁻¹
Built-in diopter adjustment	Approx. -0.8 to +1.0 m ⁻¹ (opt)
Focusing sensor	Eye-Fi provided, interchangeable
Electronic level	Horizontal: 1° increments, 30° * Quoting horizontal shooting only Quasi-tilt-type: Provided
Minor	Depth-of-field preview: Provided
AUTOFOCUS	
Type	TTL secondary image registration, phase detection
AF points	11 AF points Center: Cross-type AF at 95.5 Center: Vertical line-sensitive AF at 82.8
Focusing brightness range	EV -3 - 19 (At center AF point (sensitive to 12.8 at 45.5), room temperature, ISO 100) One-Shot AF, AI Servo AF, AI Focus AF, Manual focusing (MF)
Focus operation	Tracking sensitivity, Acceleration/deceleration tracking
AI Servo AF characteristics	AF Microadjustment (All lenses by lens amount or Adjust by lens)
AF assist beam	Enabled by the EOS-dedicated external Speedlite
EXPOSURE CONTROL	
Metering modes	63-zone TTL full-aperture metering * Evaluative metering (linked to all AF points) * Partial metering (approx. 8.0% of viewfinder at center) * Spot metering (approx. 3.5% of viewfinder at center) * Center-weighted average metering
Metering range	EV 1 - 20 (at room temperature with EF50mm f/1.8 lens, ISO 100)
Exposure control	Program AE (Scene Intelligent Auto, Creative Auto), Aperture priority AE (Portrait, Landscape, Close-up, Sports, Night Portrait, Handheld Night Scene, HDR Background Control), Program, Shutter-priority AE, Basic Zone modes*, ISO 100 - 12800 set automatically * Landscape: ISO 100 - 1600 set automatically, Handheld Night Scene: ISO 100 - 25600 set automatically P, Tv, Av, M, B to Auto ISO, ISO 100 - 25600 (in 1/3- or whole-stop increments) or ISO expansion to L (equivalent to ISO 50), H1 (equivalent to ISO 51200), H2 (equivalent to ISO 102400)
ISO speed settings	ISO speed range: Auto ISO range, and Auto ISO minimum shutter speed selectable Manual: 1/3 stops in 1/3- or 1/2-stop increments AEB: 1/3 stops in 1/3- or 1/2-stop increments (can be combined with manual exposure compensation)
AE lock	Auto: Applied in One-Shot AF mode with evaluative metering when focus is achieved Manual: By AE lock button
HDR SHOOTING	
Dynamic range adjustment	Auto, ±1 EV, ±2 EV, ±3 EV
Auto image clip	Possible
MULTIPLE EXPOSURES	
No. of multiple exposures	2 to 9 exposures
Multiple exposure control	Additive, Average
SHUTTER	
Type	Electronically-controlled, focal-plane shutter
Shutter speeds	1/4000 sec. to 30 sec., bulb, X-sync at 1/180 sec.
DRIVE SYSTEM	
Drive modes	Single shooting, Continuous shooting, Silent single shooting, Silent continuous shooting, 10-sec. self-timer/remote control, 2-sec. self-timer/remote control
Continuous shooting speed	Continuous shooting: Max. approx. 4.8 shots/sec. Silent continuous shooting: Max. approx. 3.0 shots/sec. JPEG Large/Fine: Approx. 7.3 shots (approx. 1200 shots) RAW: Approx. 14 shots (approx. 17 shots) RAW+JPEG Large/Fine: Approx. 7 shots (approx. 8 shots) * Figures in parenthesis apply to an UHS-I compatible 64 GB card based on Canon's testing standards. * Figures are based on Canon's testing standards (ISO 100 and Standard Picture Style) and an 8 GB card.
Max. burst	Continuous shooting: Max. approx. 4.8 shots/sec. Silent continuous shooting: Max. approx. 3.0 shots/sec. JPEG Large/Fine: Approx. 7.3 shots (approx. 1200 shots) RAW: Approx. 14 shots (approx. 17 shots) RAW+JPEG Large/Fine: Approx. 7 shots (approx. 8 shots) * Figures in parenthesis apply to an UHS-I compatible 64 GB card based on Canon's testing standards. * Figures are based on Canon's testing standards (ISO 100 and Standard Picture Style) and an 8 GB card.
EXTERNAL SPEEDITE	
Compatible Speedlites	E-TTL, i-subflash
Flash metering	E-TTL, i-subflash
Flash exposure compensation	±3 stops in 1/3- or 1/2-stop increments
FE lock	Provided
PC terminal	None
External Speedlite control	Provided * Compatible with radio wireless flash photography.
LIVE VIEW SHOOTING	
Aspect ratio settings	3:2, 4:3, 16:9, 1:1
FaceZone - Single, Face detection Live mode (combined detection), Quick mode (face-difference detection), Manual focusing (Approx. 3x 1/3x magnification possible)	
Focusing brightness range	EV 1 - 16 (with contrast detection, at room temperature, ISO 100)
Metering modes	Evaluative metering (0/5 zones), Partial metering (approx. 1% of Live View screen), Spot metering (approx. 3% of Live View screen), Center-weighted average metering (EV 0 - 20 (at room temperature with EF50mm f/1.4 USM lens, ISO 100)) Provided (Mode 1 and 2) Three types
Metering range	EV 0 - 20 (at room temperature with EF50mm f/1.4 USM lens, ISO 100) Provided (Mode 1 and 2) Three types
MOVIE SHOOTING	
Recording format	MOV
Movie	MPEG-4 AVC/H.264 Variable frame rate up to 1080p/30p Linear PCM
Recording size and frame rate	1920x1080 (Full HD): 30p/25p/24p 1280x720 (HD): 60i/50i 640x480 (SD): 30p/25p * 30p: 29.97 fps, 25p: 25.00 fps, 24p: 23.976 fps, 80p: 80.00 fps, 50p: 50.00 fps

Compression method	IPB, ALL-I (4:4:4)
File size	1920x1080 (30p/25p/24p) / IPB : Approx. 235 MB/min. 1920x1080 (30p/25p/24p) / ALL-I : Approx. 665 MB/min. 1280x720 (60p/50p) / IPB : Approx. 205 MB/min. 1280x720 (60p/50p) / ALL-I : Approx. 610 MB/min. 640x480 (30p/25p) / IPB : Approx. 78 MB/min. * Card reading/writing speed necessary for movie shooting: IPB: at least 6 MB per sec. ALL-I: at least 20 MB per sec.
Focusing	Same as focusing with Live View shooting Center-weighted average and Evaluative metering with the image sensor * Automatically set by the focusing mode.
Metering modes	EV 0 - 20 (at room temperature with EF50mm f/1.4 USM lens, ISO 100)
Program AE for movies and manual exposure	3-5 stops in 1/3-stop increments (1/3 stop for still photos)
Exposure compensation	With autoexposure Auto ISO (automatically set within ISO 100 - ISO 12800), Maximum and minimum ISO speeds can be changed in Creative Zone modes. With manual exposure: Auto ISO (automatically set within ISO 100 - ISO 12800), ISO 100 - ISO 12800 set manually (in 1/3- or whole-stop increments), expandable to H (equivalent to ISO 16000/20000/25600). Supported
ISO speed	Compatible with 60p/30p Selectable to 2 sec./4 sec./8 sec. Built-in monaural microphone, external stereo microphone terminal provided Sound recording level adjustable, wind filter provided, attenuator provided
Time code	Compatible with 60p/30p Selectable to 2 sec./4 sec./8 sec.
Drop frames	None
Video snapshots	None
Sound recording	None
Grid display	None
Still photo shooting	None
LCD MONITOR	
Type	TFT color, liquid-crystal monitor
Monitor size and dots	Wide, 7.7 cm (3.0-in.) (3.2) with approx. 1.04 million dots
Brightness adjustment	Manual (7 levels)
Electronic level	Provided
Interface languages	25
Displayable	25
WI-FI (WIRELESS LAN) FUNCTIONS	
Wireless LAN	IEEE802.11b, IEEE802.11g, IEEE802.11n DS-SS modulation (IEEE 802.11b) OFDM modulation (IEEE 802.11g, IEEE 802.11n) Approx. 30 m/98.4 ft * With no obstructions between the transmitting and receiving antennas and no radio interference. * With a large, high-performance antenna attached to the wireless LAN access point
Standards compliance	IEEE802.11b, IEEE802.11g, IEEE802.11n DS-SS modulation (IEEE 802.11b) OFDM modulation (IEEE 802.11g, IEEE 802.11n)
Transmission method	None
Transmission range	None
Transmission frequency	Frequency: 2.412-2.483 GHz, Channels: 1-13 (infrastructure mode*, ad hoc mode, current access point mode)
Control method	None
Security	WEP, Protected Setup supported Authentication method: Open system, Shared key, WPA-PSK, WPA2-PSK Encryption: WEP, TKIP, AES
Network Functions	None
Transfer images between cameras	* Transferring one image * Transferring related images * Images can be viewed, controlled, and recycled using a smartphone * Remote control of the camera using a smartphone
Connection to smartphones	None
Remote operating using EOS Utility	Remote control functions and image viewing functions of EOS Utility can be used via wireless LAN Images to be printed can be sent to a printer supporting PDS over IP
Print from Wi-Fi printer	Send images to a Web service
View images using a media player	Images in the camera can be sent to CANON IMAGE GATEWAY* * A link can be sent to Facebook*, Twitter, or email address * Send movies in the camera to YouTube. * You can also upload images directly to Facebook. Images can be viewed using a DUNA-compatible media player
GPS FUNCTIONS	
Geotagging images	Latitude, longitude, elevation, time (UTC) and signal acquisition For cameras not compatible with GPS, geotagging is possible using the Map Utility software (based on log information) * 15S (15 Hz) L band, 1.5, 1.0, 15, or 30 seconds, or 1, 2, or 5 minutes Course line is set from GPS time data NMEA-0183 format One file per day * When the time zone is changed, a different file is created * Log files stored in the internal memory can be transferred to a card computer * When the camera's internal memory becomes full, the oldest log files are overwritten with new information, one by one Supported
Reception frequency	None
Positioning interval	None
Time adjustment	None
Log data	None
File generation interval	None
Printing log data	None
PLAYBACK	
Image display format	Single image display, Single image + info display (Basic info, shooting info, histogram), 4-image index, 9-image index
Overexposed highlights blink	Possible
Image rotate	Possible
Rating	Possible
Movie playback	Enabled (LCD monitor, video/audio OUT, HDMI OUT), built-in speaker
Slide show	All images, by date, by folder, by movies, by stills, or by rating
Background music	Possible
Image protect	Possible

POST-PROCESSING OF IMAGES	
In-camera RAW image processing	Brightness correction, White balance, Picture Style, Auto Lighting Optimizer, High ISO speed noise reduction, JPEG image-recording quality, Color space, Peripheral illumination correction, Distortion correction, and Chromatic aberration correction Possible
Resize	None
DIRECT PRINTING	
Compatible printers	PiCtBridge-compatible printers
Printable image sizes	JPEG and RAW images DPOF Version 1.1 compatible
Print ordering	None
CUSTOM FUNCTIONS	
Custom Functions	20
My Menu registration	Register under Mode Dial's CIV2
Custom shooting modes	None
Copyright information	Entry and erasure enabled
INTERFACE	
Audio/video OUT	None
Digital terminal	None
HDMI mini OUT terminal	External microphone In terminal: 3.5 mm stereo minijack Remote control terminal: Compatible with IR-type remote controller Remote Controller RC-6 Eye-Fi card: Compatible
POWER	
Battery	Battery Pack LP-E6 (Quantity 1) * AC power can be supplied via AC Adaptor K1000000. * With Battery Grip BG-E13 attached, size-4AA batteries can be used Battery registration possible
Battery information	None
No. of possible shots	With viewfinder shooting: Approx. 1090 shots at room temperature (23°C/73°F) Approx. 880 shots at low temperature (0°C/32°F) With Live View shooting: Approx. 220 shots at room temperature (23°C/73°F) Approx. 190 shots at low temperature (0°C/32°F) Approx. 1 hr, 35 min. at room temperature (23°C/73°F) Approx. 1 hr, 25 min. at low temperature (0°C/32°F) (With a fully-charged Battery Pack LP-E6)
Movie shooting time	None
DIMENSION AND WEIGHT	
Dimensions (W x H x D)	Approx. 146.5 x 110.5 x 71.2 mm / 5.7 x 4.4 x 2.8 in.
Weight (EOS 6D (WG))	Approx. 753 g (26.5 oz.) (CIPA Guidelines) Approx. 580 g (20.4 oz.) (Body only)
Weight (EOS 6D (M))	Approx. 750 g (26.5 oz.) (CIPA Guidelines) Approx. 675 g (23.8 oz.) (Body only)
Weight (EOS 6D (W))	Approx. 750 g (26.5 oz.) (CIPA Guidelines) Approx. 675 g (23.8 oz.) (Body only)
OPERATION ENVIRONMENT	
Working temperature range	0°C - 40°C / 32°F - 104°F
Working humidity	35% or less
BATTERY PACK LP-E6	
Type	Rechargeable lithium-ion battery
Rated voltage	7.2 V DC
Battery capacity	1800 mAh
Dimensions (W x H x D)	Approx. 38.4 x 21.0 x 56.8 mm / 1.5 x 0.8 x 2.2 in.
Weight	Approx. 80 g / 2.8 oz.
BATTERY CHARGER LC-E6	
Compatible battery	Battery Pack LP-E6
Recharging time	Approx. 2 hr, 30 min.
Rated input	100 - 240 V AC (50/60 Hz)
Rated output	8.4 V DC / 1.2 A
Working temperature range	5°C - 40°C / 41°F - 104°F
Working humidity	35% or less
Dimensions (W x H x D)	Approx. 69.0 x 33.0 x 53.0 mm / 2.7 x 1.3 x 2.1 in.
Weight	Approx. 130 g / 4.6 oz.
BATTERY CHARGER LC-E6E	
Compatible battery	Battery Pack LP-E6
Power cord length	Approx. 1 m / 3.3 ft.
Recharging time	Approx. 2 hr, 30 min.
Rated input	100 - 240 V AC (50/60 Hz)
Rated output	8.4 V DC / 1.2 A
Working temperature range	5°C - 40°C / 41°F - 104°F
Working humidity	35% or less
Dimensions (W x H x D)	Approx. 125 g / 4.4 oz. (excluding power cord)
Weight	Approx. 125 g / 4.4 oz. (excluding power cord)

VIEWFINDER INFORMATION



LCD PANEL INFORMATION



SYSTEM CHART

