

Canon

**SOUTH & SOUTHEAST ASIA
REGIONAL HEADQUARTERS**

CANON SINGAPORE PTE. LTD.

1 HarbourFront Avenue
#04-01 Keppel Bay Tower
Singapore 098632
Tel: 65-6799-8888
Fax: 65-6799-8882

www.canon-asia.com

BANGLADESH
J.A.N. Associates
Tel : 880-2-8611444
Fax : 880-2-8610410

BRUNEI
Interhouse Company
Tel : 673-2-653001
Fax : 673-2-653003

CAMBODIA
i-Click (Cambodia) Pte. Ltd.
Tel : 855-23-996638
Fax : 855-23-996639

INDONESIA
P.T. Datascrip
Tel : 62-21-26648999
Fax : 62-21-6544811-13
www.canon.co.id

MALAYSIA
Canon Marketing
(Malaysia) Sdn. Bhd.
Tel : 60-3-78446000
Fax : 60-3-78450505
www.canon.com.my

MALDIVES
SIMDI Company Pvt. Ltd.
Tel : 960-324819
Fax : 960-318433

MYANMAR
Myanmar Golden Rock
International Co., Ltd.
Tel : 95-1-202092/3/4
Fax : 95-1-202079

NEPAL
Primax International, Inc.
Tel : 977-1-4224079
Fax : 977-1-4229358

PAKISTAN
MBM International
Tel : 92-21-32277093/4
Fax : 92-42-37530948

SINGAPORE
Canon Singapore Pte. Ltd.
Domestic Operations
Tel : 65-6799-8888
Fax : 65-6799-8882
www.canon.com.sg

SRI LANKA
Metropolitan
Office Pvt. Ltd.
Tel : 94-011-4700200
Fax : 94-011-4700266

THAILAND
Canon Marketing
(Thailand) Co., Ltd.
Tel : 66-2-3449999
Fax : 66-2-3449922
www.canon.co.th

VIETNAM
Canon Singapore Pte. Ltd.
Ho Chi Minh City Representative
Office & Showroom
Tel : 848-382-00466
Fax : 848-382-00477

Hanoi Representative Office
Tel : 84-4-7711677
Fax : 84-4-7711678
www.canon.com.vn

THE LEGEND
*RE*DEFINED



EOS 5D Mark III

Errors and omissions excepted.
Images are simulated.
Weight and dimensions are approximate.
Subject to change without notice.
Macintosh is a trademark of Apple Computer Inc., registered in the United States and other countries.
Microsoft® and Windows® are either registered trademarks or trademarks of Microsoft Corporation
in the United States and/or other countries. Other names and products not mentioned above may be
registered trademarks of trademarks of their respective companies.
SD Logo is a trademark. Canon is a registered trademarks of Canon Inc.

Warning: Unauthorized recording of copyrighted materials may infringe on the rights of copyright owners
and be contrary to copyright laws.

0165W743

EOS 5D Mark III

Experience a world of unparalleled craftsmanship and refinement; a camera of high performance and excellent image quality as you the photographer seek the one shot that tells a thousand tales.

Owning and shooting with the EOS 5D Mark III goes beyond joining the diverse family of EOS. More than anything, it is about that unique EOS DSLR sensation, which is simply the comforting knowledge that the EOS 5D Mark III makes no compromise with its DIGIC 5+ imaging processor, 22.3-megapixel full-frame CMOS sensor, and incredibly wide ISO range. So venture into the unknown for a fulfilling photographic adventure with the essence of imaging distinction — the EOS 5D Mark III.

22.3 MEGA
PIXELS
CMOS

DIGIC
5+

ISO
25600
12800

Upto
6.0
Frames
Per Sec

61
High Density
Reticular AF

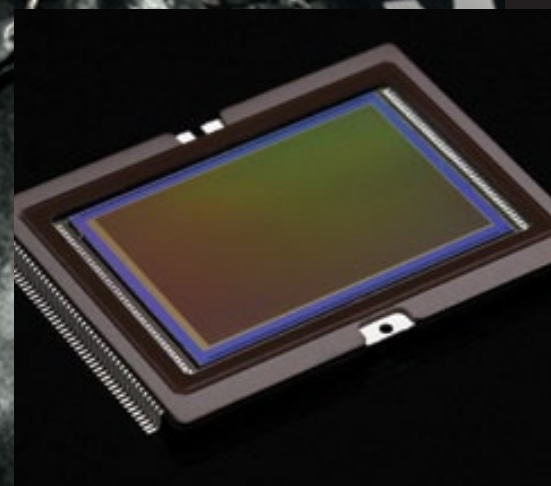
Multiple Exposure

HDR
High Dynamic Range

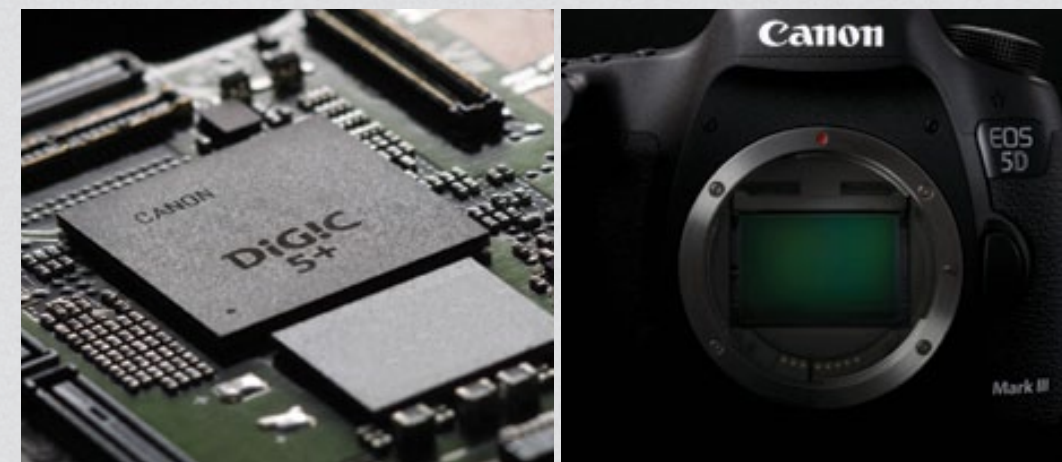
EOS Movie
FULL HD



POWER *RE*ENGINEERED



The heart of the new EOS 5D Mark III is the latest generation of Canon's acclaimed 22.3-megapixel full-frame CMOS sensor, and its soul the DIGIC 5+ imaging processor, now engineered to deliver greater full-frame performance.



22.3 MEGA PIXELS CMOS SUPERIOR 22.3-MEGAPIXEL FULL-FRAME CMOS SENSOR

Displaying an improved shooting performance and excellent image quality, the EOS 5D Mark III is renowned as one of the most technologically advanced of its class. Designed with gapless microlens arrays for greater light-gathering efficiency, it delivers high ISO speeds, minimal noise, and offers a wide dynamic range. This sure-win combination produces images of stunning clarity, low noise, and rich colors even in low-light situations.

DIGIC 5+ DYNAMIC DIGIC 5+ IMAGING PROCESSOR

The new EOS 5D Mark III tops the record with its processing speed raised to an incredible 17 times faster than the DIGIC 4. The next-generation DIGIC 5+ imaging processor opens whole new avenues for fantastic quick-draw shooting.

In tandem with high-speed image processing, basic ISO speed increases by two stops. This core of power certainly packs a punch with its accelerated continuous shooting speed, crisp image details, and exceptional low-light performance.

ISO INCREDIBLE ISO SPEED

25600
12800 Taking on the challenge to achieve fine subtle details in low-light situations, the EOS 5D Mark III emerged successful with heightened ISO sensitivity. With new gapless microlens arrays and improved photo diodes, the standard ISO range is ISO 100 - 25600, expandable to L for ISO 50, H1 for ISO 51200, and H2 for ISO 102400. Shooting for better results in low light is now possible with high signal-to-noise ratio, a wide dynamic range, and new customizable Auto ISO function.

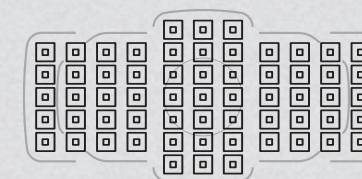
PRECISION *RE*FOCUSED



Effortlessly dynamic, nothing distracts from the utter thrill of capturing a shot with the EOS 5D Mark III. With a highly precise 61-Point High-Density Reticular AF system backed up by a most intelligent metering sensor, shoot assured.



AF SENSOR

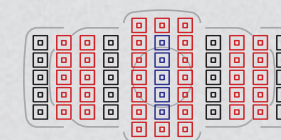


AF 61-POINTS

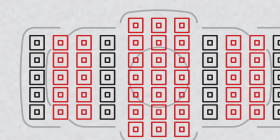


61-POINT HIGH-DENSITY RETICULAR AF

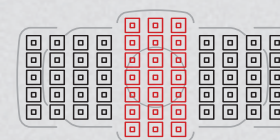
A giant leap forward in auto-focusing systems, the EOS 5D Mark III shares the same piece of innovation used in Canon's flagship professional-standard EOS-1D Series. The discerning 61-Point High-Density Reticular AF system with 41 cross-type points provides enhanced AF coverage for improved subject tracking capabilities and very precise focusing.



F/2.8 LENSES*
Cross-type AF 41 points, includes dual-cross AF (five points) at center



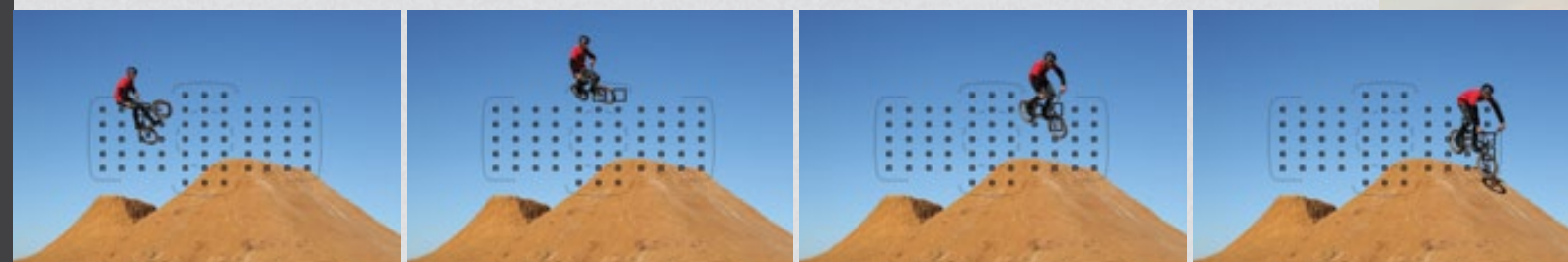
F/4.0 LENSES*
Cross-type AF 41 points



F/5.6 LENSES*
Cross-type AF 21 points

There are five central dual cross-type points for accurate focusing at f/2.8 (diagonal), another 21 central cross-type points for a maximum aperture of f/5.6, and 20 outer cross-type points for focusing at f/4. The 61-Point High-Density AF system contributes to first-rate low-light performance of the EOS 5D Mark III, with an improved pixel configuration that allows focusing up to EV-2 at central AF points with an f/2.8 lens.

*Number of available AF points and cross-type points vary depending on the lens



One of the many technologies that go into making the EOS 5D Mark III's AF system truly remarkable is the AF Configuration Tool that enables control of AI Servo AF III parameters according to subject movement and shooting situation. These parameters include tracking sensitivity, acceleration and deceleration of tracking, and AF point auto switching.

- Versatile multi purpose setting
- Continue to track subjects, ignoring possible obstacles
- Instantly focus on subjects suddenly entering AF points
- For subjects that accelerate or decelerate quickly
- For erratic subjects, moving in any direction
- For subjects that change speed and move erratically

The AF Configuration Tool can easily adjust the parameters to suit various shooting conditions — versatile multi-purpose setting, continuous tracking of subject while ignoring obstacles, instant focus on subjects newly entering AF points, tracking rapidly accelerating or decelerating subjects, tracking erratic moving subjects, and tracking erratic subjects of random speeds.



63-ZONE ICFL METERING SYSTEM

Tailored specifically for the 61-Point High-Density Reticular AF system, the iFCL 63-zone dual-layer metering sensor provides four metering modes: evaluative, partial, spot, and center-weighted average.

To prevent the issue of underexposure when shooting subjects with plenty of reds, the metering sensor's dual-layer solution has one layer sensitive to red/green light and another layer sensitive to blue/green light. It takes a combination of data from these two layers to provide an accurate light reading.



Without AF information



With AF information



Without color information



With color information

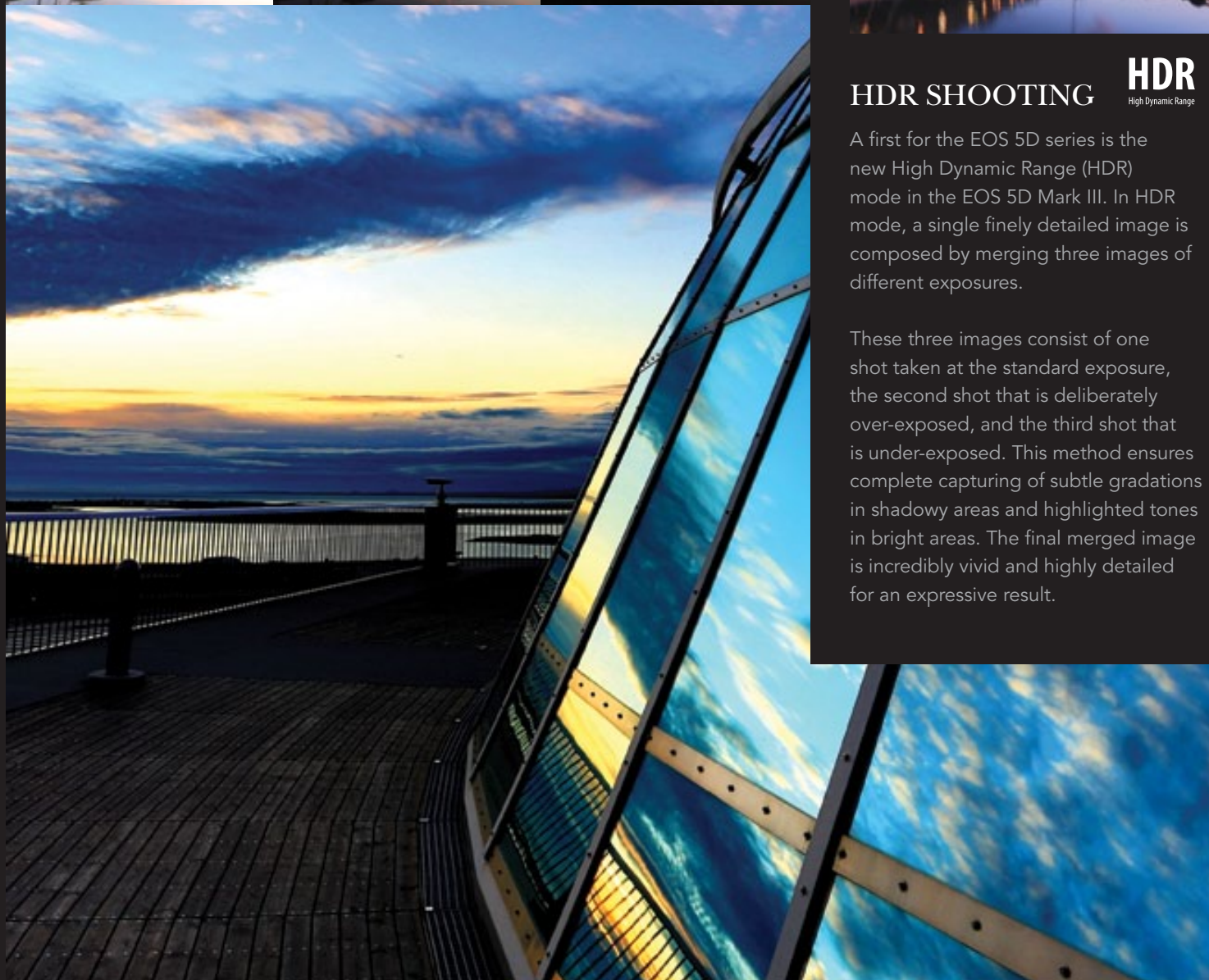
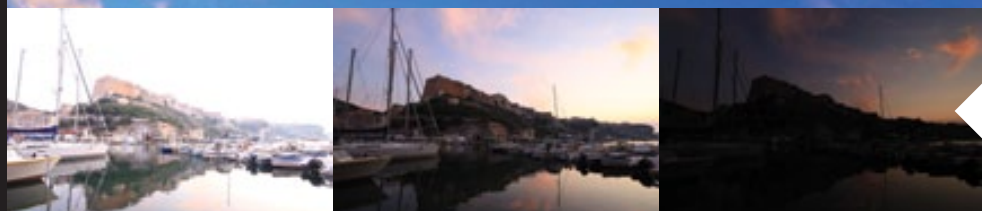


6 FPS HIGH-SPEED SHOOTING

Capable of up to a rapid 6 frames per second during high-speed continuous shooting thanks to its advanced CMOS Sensor and powerful DIGIC 5+ processor, the EOS 5D Mark III captures a moment in a heartbeat. A combination of balancers and absorption mechanisms serve to improve AI Servo AF precision during high-speed continuous shooting.



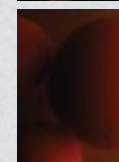
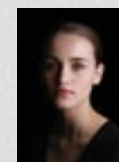
DISTINCTION *RE*INVENTED



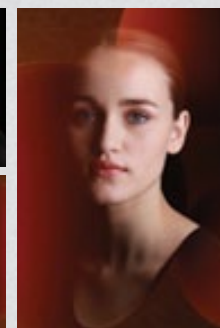
HDR SHOOTING **HDR** High Dynamic Range

A first for the EOS 5D series is the new High Dynamic Range (HDR) mode in the EOS 5D Mark III. In HDR mode, a single finely detailed image is composed by merging three images of different exposures.

These three images consist of one shot taken at the standard exposure, the second shot that is deliberately over-exposed, and the third shot that is under-exposed. This method ensures complete capturing of subtle gradations in shadowy areas and highlighted tones in bright areas. The final merged image is incredibly vivid and highly detailed for an expressive result.



Additive



MULTIPLE EXPOSURES

To encourage photographers to further their creative boundaries, the EOS 5D Mark III also comes equipped with the Multiple Exposure feature. This neat little feature allows different images to be super-imposed on top of one another to create a possibly surreal and artistic final image.

If photographing moving subjects in high-speed up to 6 fps continuous shooting mode, the images can be used to recreate the appearance of motion capture. Up to nine multiple exposures can be taken for one image, with the exposures level varying from Additive, Average, (Comparative) Bright, to (Comparative) Dark.



PICTURE STYLE AUTO

Bolstering the existing preset Picture Styles is Picture Style Auto that finely adjusts and controls color tones for each image based on information obtained from the EOS Scene Detection System. This highly intelligent system analyzes the conditions of the shooting scene based on subject's face, color, brightness, movement, contrast, and distance.

Picture Style Auto is particularly effective in drawing out the richness of nature and outdoor scenes, as well as sunset scenes.



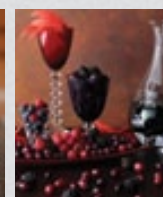
STANDARD



NEUTRAL



PORTRAIT



FAITHFUL



LANDSCAPE



MONOCHROME

IN-CAMERA RAW IMAGE PROCESSING

For absolute image clarity and high image fidelity, the EOS 5D Mark III's 22.3-megapixels and 14-bit fine gradation digital signal output play an important role. The EOS 5D Mark III allows users to apply settings such as Auto Lighting Optimizer, lens illumination correction, chromatic aberration correction, and perform noise reduction for high ISO speeds.

Based on information from the EOS Scene Detection System, the Auto Lighting Optimizer finely tunes brightness and contrast levels for images to strike a balanced and ideal exposure. The EOS 5D Mark III is capable of storing up to 40 different lens data for peripheral illumination correction that neatly removes the vignette effect that occasionally appears around the corners of images. Chromatic aberration correction ensures minimal purple fringing that sometimes occurs in high-contrast images.



MOTION *RE*IMAGINED



Shooting movies is clearly in the EOS 5D Mark III's heritage, with advanced cinematic features distinctly evident for the most avant-garde of aspiring movie-makers.



EXCEPTIONAL EOS MOVIE

Utilizing cinematic technologies based on movie industry standards, the new and improved EOS Movie function is now able to produce videos of outstanding brilliance and quality better than before.

Powered by the combine efforts of its full-frame CMOS sensor and DIGIC 5+ imaging processor, the EOS 5D Mark III easily captures full HD videos in all the popular frame rates, now with drastically reduced moiré even at higher ISO speeds. Shooting videos in low-light conditions is another easy feat with reduced noise and no compromise on image quality.

Post-production workflow is further streamlined with the new video formats requested by film editors, and now the EOS 5D Mark III supports both ALL-I and IPB compression modes. ALL-I results in larger but easier to edit files, as frames are individually compressed. IPB compresses frames in groups, which reduces file sizes.

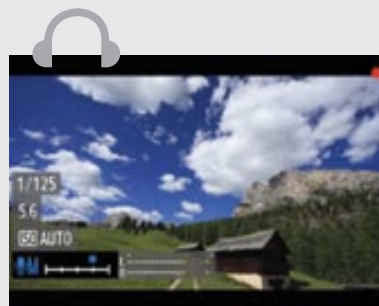




LIVE VIEW SHOOTING

Built upon improvements, the EOS 5D Mark III now boasts better exposure control, reduced shutter noise and minimal camera vibration when shooting in Live View mode.

In response to the needs of professional photographers, a new Live View shooting/Movie shooting switch has been integrated into the camera. When using EOS Utility to perform Remote Live View shooting, exposure simulation can now be disabled under any shooting condition.



PURE AUDIO DELIGHT

New to the inherent auditory capabilities of the EOS 5D Mark III is the ability to check or adjust the sound recording level during video shooting. Besides the built-in microphone with wind filter feature, a headphone terminal is also provided to check sound recording while shooting or during playbacks.



DUAL CARD SLOTS



Based on requests from professional photographers and movie-makers, the EOS 5D Mark III now comes with a CF card slot and an SD card slot for greater flexibility with recording preferences, and immediate backup of footage. The increased storage capacity also removes the 4GB limit for recording videos, thus making seamless shooting possible. The recording limit for movie clips is 29 minutes and 59 seconds.



MOVIE PLAYBACK & EDITING

During movie playback, the EOS 5D Mark III's internal speaker can have its volume adjusted to one of 63 levels. Recorded movies can also be edited to cut the first and last scenes of the clip on one-second increments, which can be then saved as a new separate file or to overwrite the original movie file.



A BEAUTY RE/CRAFTED



That form follows function, is the philosophy adapted for the creation of every DSLR masterpiece, and the EOS 5D Mark III is no exception.



SOLID & STEADY ERGONOMICS

Looking into the past to refine the present, the new EOS 5D Mark III retains an ultra-fluid form with flowing curves and a highly durable exterior finish. A thick rubber skin coats a comfortable mould for a reassuring and fitting grip. To increase portability, the EOS 5D Mark III is built from sturdy magnesium alloy housing that protects its lightweight internal assembly. The EOS 5D Mark III also lasts an impressive 150,000 shutter cycles* to accommodate the rigors of high-speed continuous shooting.

*The shutter unit has passed a release test of 150,000 actuations. (This test was conducted internally and based on standard shooting conditions).

DUST & WATER RESISTANT

The EOS 5D Mark III weathers well against the most grueling of shooting environments while maintaining first-class imaging performance. Securely trimmed and insulated with drip-proof and dust-proof measures, the EOS 5D Mark III proves a reliable and steadfast shooting partner in the direst conditions.

NATURAL OPERATING EASE

Ever attentive to the demands of professional photographers, the EOS 5D Mark III now features larger and more legible shooting buttons in favorable positions for optimum handling. Some new buttons added for improved ease of use include the Quick Control button to easily access and change various settings, a Locking Mode dial to lock shooting modes, a Multi-Function button, and the Image Creation button to access creative image functions.

3.2" CLEAR VIEW II LCD

Compose your photographic vision in true clarity with the 3.2" Clear View II LCD monitor with an amazing 1.04 million dot resolution, and featuring a wide viewing angle while accurately depicting the natural colors of the scene. This high-resolution LCD display makes it easy on the eyes when viewing with its anti-reflection design and auto-adjustable display brightness.



TRULY PERCEPTIVE VIEWFINDER

The EOS 5D Mark III's new Intelligent Viewfinder is a transparent LCD display with approximately 100% coverage and 0.71x magnification. This viewfinder exhibits a superimposed display of AF information and grid display for greater accuracy in subject tracking, and can be turned on or off if required.



Speedlite 600EX

Speedlite 600EX-RT

EXTERNAL FLASH FEATURES

Bring new light into the photographic experience with the two brightest stars of the acclaimed Speedlite series of external flash units — the Speedlite 600EX and Speedlite 600EX-RT. Sporting a guide no. 60 at 200mm focal length and an expanded zoom range of 20-200mm, these two Speedlites make an easy job of any shooting exercise.

The Speedlites' intensity and wide distribution of light comfortably support a wide range of lenses on the camera, from wide-angle to telephoto lenses. Boosting the EOS 5D Mark III's auto-focusing finesse is the AF-assist beam that covers all 61 AF points. Both Speedlites boast greatly improved hot shoe contact reliability, heat resistance, dust and water resistance, and color filters (light orange and dark orange) for the flash color temperature to match shooting conditions.

The Speedlite 600EX-RT further prides itself with new radio communication abilities for fuss-free operation and flexible group flash setups. Using the Speedlite 600EX-RT, it is even possible to remotely trigger the camera and perform linked shooting functions.



WIRELESS FILE TRANSMITTER WFT-E7

Never has photo-shooting efficiency been so easily demonstrated with the Wireless File Transmitter WFT-E7. When connected to the WFT-E7, the EOS 5D Mark III is able to speedily transfer images to a computer or FTP server wirelessly or via a wired LAN connection.

A nifty resend feature will ensure files that failed to be sent are automatically resent upon restoration of network connections. The WFT-E7 also comes with new built-in Bluetooth function that supports other GPS devices.

The WFT-E7 truly excels in outdoor and high-speed action shoots where wireless-linked shooting makes it possible to capture the subject from many different angles. Up to ten slave cameras linked to the master camera can be triggered, making it an ideal setup for wildlife or sports photography.

GPS RECEIVER GP-E2

The GPS Receiver GP-E2 for EOS cameras is an indispensable shooting companion for photographers on the constant move and in remote or uncharted locations. This high-sensitivity and high-precision GPS module can determine current geographical positions, and is fully functional as a standalone device.

With time synchronization function and built-in digital compass, the GP-E2 can be enabled to tag locale information to images. Photographers will find this GPS device especially useful in displaying maps for shooting locations and directions to sites.



SPEEDLITE TRANSMITTER ST-E3-RT

The next generation in wireless flash systems, the new Speedlite Transmitter ST-E3-RT communicates with other Speedlite units via radio transmissions. It is able to control five groups and up to 15 Speedlite 600EX-RT slave units with radio-controlled, two-way wireless transmission up to 30 meters.

NEW EF LENSES

EF
Lenses

Wide
Angle



EF 24mm f/2.8 IS USM & EF 28mm f/2.8 IS USM

Introducing two of the first wide-angle single-focus lenses to possess a built-in image stabilizer — the EF24mm f/2.8 IS USM and the EF28mm f/2.8 IS USM. This new image stabilizer feature achieves the equivalent effect of up to four stops faster.

With a ring ultrasonic motor (USM) and optimized autofocus algorithms for responsive and quiet auto-focusing, these small and lightweight lenses are a breeze to operate. The EF24mm f/2.8 IS USM has a shorter minimum focusing distance of 0.2 meters compared to its former model while the EF28mm f/2.8 IS USM features a shorter minimum focusing distance of 0.23 meters, thus allowing photographers to get closer to the subject.



Standard
Zoom



EF 24-70mm f/2.8L II USM

The EF24-70mm f/2.8L II USM is a high-performance L-series large-aperture standard zoom lens with a wide focal length that uses three aspheric lens elements, one Super UD lens element, and two UD lens elements. This accurately corrects magnification-type chromatic aberration at wider angles to achieve incredibly pure image quality.

Now in a more compact form, this highly durable and tough lens is fully capable of weathering harsh conditions and frequent usage. Besides quick yet silent autofocus, the EF24-70mm also has a mechanical manual focus and a circular aperture for beautiful soft-focus images. With minimum focusing distance of 0.38 meters and magnification of 0.21x, this lens is also perfect for close-ups.



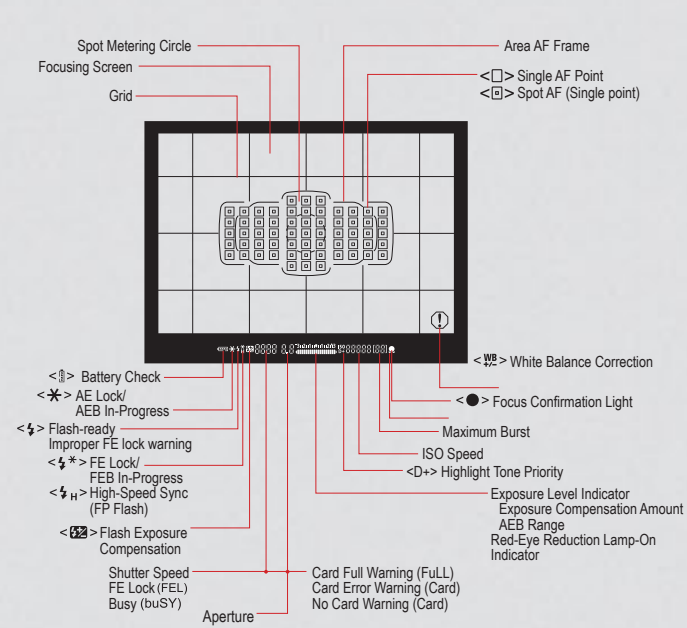
NOMENCLATURE OF 5D MARK III



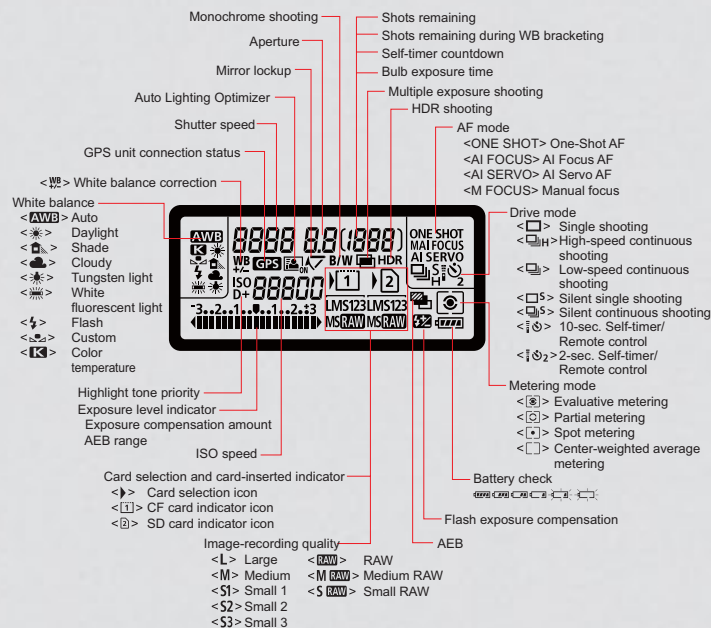
SPECIFICATIONS

TYPE Type: Digital, single-lens reflex, AF/AE camera Recording media: CF card (Type I, UDMA mode 7-compatible), SD memory card, SDHC memory card, SDXC memory card Image sensor size: Approx. 36 x 24 mm Compatible lenses: Canon EF lenses (except EF-S lenses) (35 mm-equivalent lens focal length will be as indicated on the lens) Canon EF mount LENS MOUNT Type: CMOS sensor Effective pixels: Approx. 22.3 megapixels Aspect ratio: 3:2 Dust delete feature: Auto, Manual, Dust Delete Data appending	SHUTTER Type: Electronically-controlled, focal-plane shutter Shutter speeds: 1/8000 sec. to 1/60 sec. (Scene Intelligent Auto mode), X-sync at 1/200 sec. *With a wide-angle lens, the shutter speed may be 1/60 sec. or slower. 1/8000 sec. to 30 sec., bulb (Total shutter speed range. Available range varies by shooting mode.)	Ratings: Movie playback: Enabled (LCD monitor, video/audio OUT, HDMI OUT), built-in speaker Slide show: All images, by date, by folder, movies, stills, or by rating Image protect: Possible Copying images: Possible POST-PROCESSING OF IMAGES In-camera RAW image processing: Resize: Brightness correction, White balance, Picture Style, Auto Lighting Optimizer, High ISO speed noise reduction, JPEG image-recording quality, Color space, Peripheral illumination correction, Distortion correction, and Chromatic aberration correction DIRECT PRINTING Compatible printers: PictBridge-compatible printers Printable images: JPEG and RAW images Print ordering: DPOF Version 1.1 compatible	IMAGE TRANSFER Transferable images: Still photos (JPEG, RAW, RAW+JPEG images), Movies CUSTOM FUNCTIONS Custom Functions: 13 My Menu registration: Possible Custom shooting modes: Register under Mode Dial's C1/C2/C3 Copyright information: Entry and inclusion enabled
RECORDING SYSTEM Recording format: Design rule for Camera File System 2.0 Image type: JPEG, RAW (14-bit Canon original), RAW+JPEG simultaneous recording enabled Recorded pixels: L (Large) : Approx. 22.10 megapixels (5760 x 3840) M (Medium) : Approx. 9.80 megapixels (3840 x 2560) S1 (Small 1) : Approx. 5.50 megapixels (2880 x 1920) S2 (Small 2) : Approx. 2.50 megapixels (1920 x 1280) S3 (Small 3) : Approx. 350,000 pixels (720 x 480) RAW : Approx. 22.10 megapixels (5760 x 3840) M-RAW : Approx. 10.50 megapixels (3960 x 2640) S-RAW : Approx. 5.50 megapixels (2880 x 1920) Recording function: Standard, Auto switch card, Rec. separately, Rec. to multiple File name: Possible File numbering: Continuous, auto reset, manual reset	DRIVE SYSTEM Drive modes: Single shooting, High-speed continuous shooting, Low-speed continuous shooting, Silent single shooting, Silent continuous shooting, 10-sec. self-timer/remote control, 2-sec. self-timer/remote control Continuous shooting speed: High-speed continuous shooting: Max. approx. 6 shots/sec. Low-speed continuous shooting: Max. approx. 3 shots/sec. Max. burst: Silent continuous shooting: Max. approx. 3 shots/sec. (approx. 16270 shots) RAW+JPEG Large/Fine: Approx. 7 shots (approx. 7 shots) *Figures are based on Canon's testing standards ISO 100 and Standard Picture Style and a CF card. *Figures in parentheses apply to a UDMA mode 7, 128 GB card based on Canon's testing standards.	EXTERNAL SPEEDLITE Compatible Speedlites: EX-series Speedlites Flash metering: E-TTL II autofocus Flash exposure compensation: ±3 stops in 1/3- or 1/2-stop increments Preset code: User setting 1, User setting 2 PC terminal: Provided External Speedlite control: *Compatible with radio wireless flash photography.	INTERFACE Audio/video OUT/Digital terminal: Analog video (Compatible with NTSC/PAL/stereo audio output) HDMI mini OUT terminal: Personal computer communication, Direct printing (Hi-Speed USB or equivalent), Wireless File Transmitter WFT-E7, GPS Receiver GP-E2 connection Type C (Auto switching of resolution), CEC-compatible External microphone IN terminal: 3.5 mm stereo mini-jack Headphone terminal: 3.5 mm stereo mini-jack Remote control terminal: Compatible with N3-type remote controller Wireless remote control: Remote Controller RC-6 Eye-Fi card: Compatible
IMAGE PROCESSING DURING SHOOTING Picture Style: Auto, Standard, Portrait, Landscape, Neutral, Faithful, Monochrome, User Def. 1-3 White balance: Auto, Preset (Daylight, Shade, Cloudy, Tungsten light, White fluorescent light, Flash), Custom, Color temperature setting (Approx. 2500-10000K), White balance correction, and White balance bracketing possible *Flash color temperature information transmission enabled Applicable to long exposures and high ISO speed shots Noise reduction: Auto Lighting Optimizer Highlight tone priority: Provided Lens aberration correction: Peripheral illumination correction, Chromatic aberration correction	LIVE VIEW SHOOTING Aspect ratio settings: 3:2, 4:3, 16:9, 1:1 Focus modes: Live mode, Face detection Live mode (contrast detection), Quick mode (phase-difference detection), Manual focusing (Approx. 5x / 10x magnification possible) Focusing brightness range: EV 1 - 18 (with contrast detection, at 23°C/73°F, ISO 100) Metering modes: Evaluative metering with the image sensor Metering range: EV 0 - 20 (at 23°C/73°F with EF50mm f/1.4 USM lens, ISO 100) Silent shooting: Provided (Mode 1 and 2) Grid display: Three types	BATTERY INFORMATION Battery: Battery Pack LP-E6 (Quantity 1) Battery life: *AC power can be supplied via AC Adapter Kit ACK-E6. *With Battery Grip BG-E11 attached, size-A/LR6 batteries can be used. Remaining capacity, Shutter count, Recharge performance, and Battery registration possible With viewfinder shooting: Approx. 950 shots at 23°C/73°F, approx. 850 shots at testing standards) 0°C/32°F With Live View shooting: Approx. 200 shots at 23°C/73°F, approx. 180 shots at 0°C/32°F Approx. 1 hr. 30 min. at 23°C/73°F (with fully-charged Battery Pack LP-E6) CR1616 lithium battery (Quantity 1)	OPERATION ENVIRONMENT Working temperature range: 0°C - 40°C / 32°F - 104°F Working humidity: 85% or less BATTERY PACK LP-E6 Type: Rechargeable lithium-ion battery Rated voltage: 7.2 V DC Battery capacity: 1800 mAh Dimensions (W x H x D): Approx. 38.4 x 21.0 x 56.8 mm / 1.5 x 0.8 x 2.2 in. Weight: Approx. 80 g / 2.8 oz.
VIEWFINDER Type: Eye-level pentaprism Coverage: Vertical/Horizontal approx. 100% (with Eye point approx. 21 mm) Magnification: Approx. 0.71x (-1 m-1 with 50 mm lens at infinity) Eye point: Approx. 21 mm (from eyepiece lens center at -1 m-1) Built-in diopter adjustment: Approx. -3.0 ~ +1.0 m-1 (dpt) Focusing screen: Fixed AF status indicator: Provided Grid display: Provided Electronic level: *During horizontal shooting Quick-return type Mirror: Provided Depth-of-field preview: Quick	MOVIE SHOOTING Movie recording compression: MPEG-4 AVC/H.264 Variable (average) bit rate Linear PCM MOV Audio recording format: Recording format: MOV Recording size and frame rate: 1920x1080 (Full HD): 30p/25p/24p 1280x720 (HD) : 60p/50p 640x480 (SD) : 30p/25p *30p: 29.97 fps, 25p: 25.00 fps, 24p: 23.976 fps, 60p: 59.94 fps, 50p: 50.00 fps ALL-I (i-only), IPB 1920x1080 (30p/25p/24p) / IPB: Approx. 235 MB/min. 1920x1080 (30p/25p/24p) / ALL-I: Approx. 685 MB/min. 1280x720 (60p/50p) / IPB: Approx. 235 MB/min. 1280x720 (60p/50p) / ALL-I: Approx. 610 MB/min. 640x480 (30p/25p) / IPB: Approx. 78 MB/min. *Card reading/writing speed necessary for movie shooting: CF card: IPB: at least 10 MB per sec./ALL-I: at least 30 MB per sec. SD card: IPB: at least 6 MB per sec./ALL-I: at least 20 MB per sec. Same as focusing with Live View shooting Center-weighted average and Evaluative metering with the image sensor *Automatically set by the focusing mode: EV 0 - 20 (at 23°C/73°F with EF50mm f/1.4 USM lens, ISO 100) 1. Autoexposure, 2. Shutter-priority AE, 3. Aperture-priority AE, 4. Manual exposure *With 1, 2, and 3 exposure compensation and AE lock are possible (except in Scene Intelligent Auto mode). ±3 stops in 1/3-stop increments (±5 stops for still photos) Some Intelligent Auto and Tv: Automatically set within ISO 100 - 12800 P, Av, and B: Automatically set within ISO 100 - 12800 expandable to H (equivalent to ISO 25600) M: Auto ISO (automatically set within ISO 100 - 12800), ISO 100 - 12800 set manually (in 1/3- or whole-stop increments), expandable to H (equivalent to ISO 16000/20000/25600) Supported Compatible with 60p/30p Built-in monaural microphone, external stereo microphone terminal provided Sound recording level adjustable, wind filter provided Headphone terminal provided Three types Possible	BATTERY CHARGER LC-E6 Compatible battery: Battery Pack LP-E6 Recharging time: Approx. 2 hr. 30 min. Rated input: 100 ~ 240 V AC (50/60 Hz) 8.4 V DC / 1.2 A Rated output: 5°C - 40°C / 41°F - 104°F Working humidity: 85% or less Approx. 69.0 x 33.0 x 93.0 mm / 2.7 x 1.3 x 3.7 in. Dimensions (W x H x D): Approx. 130 g / 4.6 oz.	BATTERY CHARGER LC-E6E Compatible battery: Battery Pack LP-E6 Power cord length: Approx. 1 m / 3.3 ft. Rated input: Approx. 2 hours 30 min. Rated output: 100 ~ 240 V AC (50/60 Hz) 8.4 V DC / 1.2 A Working temperature range: 5°C - 40°C / 41°F - 104°F Working humidity: 85% or less Approx. 69.0 x 33.0 x 93.0 mm / 2.7 x 1.3 x 3.7 in. Dimensions (W x H x D): Approx. 125 g / 4.4 oz. (excluding power cord)
EXPOSURE CONTROL Metering modes: 63-zone TTL full-aperture metering Evaluative metering (linked to all AF points) Partial metering (approx. 6.2% of viewfinder at center) Spot metering (approx. 1.5% of viewfinder at center) Center-weighted average metering EV 1 - 20 (at 23°C/73°F with EF50mm f/1.4 USM lens, ISO 100) Program AE (Scene Intelligent Auto, Program), Shutter-priority AE, Aperture-priority AE, Manual exposure, Bulb exposure Scene Intelligent Auto: ISO 100 - 12800 set automatically P, Tv, Av, M, B: Auto ISO, ISO 100 - 25600 (in 1/3- or whole-stop increments), or ISO expansion to L (50), H1 (equivalent to ISO 51200), H2 (equivalent to ISO 102400) ISO speed settings: ISO speed range, Auto ISO range, and Auto ISO minimum shutter speed settable Exposure compensation: Manual: ±5 stops in 1/3- or 1/2-stop increments AEB: ±3 stops in 1/3- or 1/2-stop increments (AEB can be combined with manual exposure compensation) Applied in One-Shot AF mode with evaluative metering when focus is achieved By AE lock button	ISO SPEED Type: TFT color, liquid-crystal monitor Wide, 8.1 cm (3.2-in.) (3.2) with approx. 1.04 million dots Auto (Dark, Standard, Bright), Manual (7 levels) Electronic level: Provided Interface level: 25 Displayable	PLAYBACK Image display formats: Single-image display, Single-image + Info display (Basic info, shooting info, histogram), 4-image index, 9-image index, 2-image display Highlight alert: Overexposed highlights blink AF point display: Possible Grid display: Three types Zoom magnification: Approx. 1.5x - 10x, starting magnification and position settable Image browsing methods: Single image, jump by 10 or 100 images, by shooting date, by folder, by movies, by stills, by rating Possible Image rotate: Possible	EF24-105MM F1.8 IS USM Angle of view: Diagonal extent: 84° - 23°20', Horizontal extent: 74° - 19°20', Vertical extent: 53° - 13° Lens construction: 18 elements in 13 groups Minimum aperture: f/22 Closest focusing distance: 0.45 m / 1.48 ft. (from image sensor plane) Max. magnification: 0.23x (at 105 mm) Field of view: 53° x 34° - 158° x 106 mm / 21.1 x 13.6 - 6.2 x 4.2 in. (at 0.45 m) Image Stabilizer: Lens shift type Filter size: 77 mm Lens cap: E-77U Max. diameter x length: 83.5 x 107 mm / 3.3 x 4.2 in. Weight: Approx. 670 g / 23.6 oz. EV-83H Case: LP1219

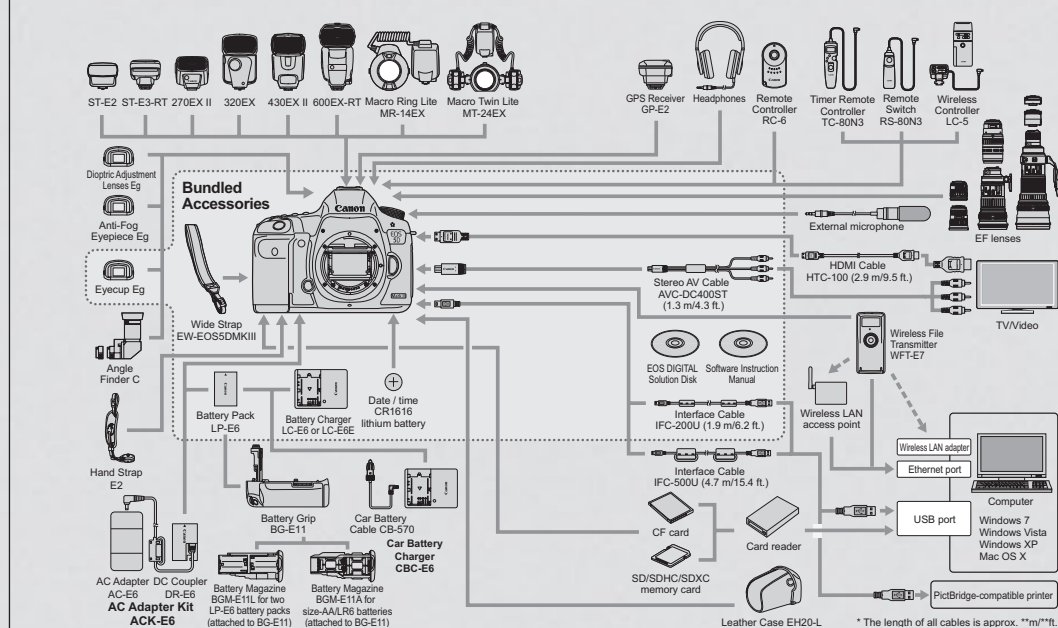
VIEWFINDER INFORMATION



LCD PANEL INFORMATION



SYSTEM CHART



BUNDLED SOFTWARE

The camera will be bundled with the EOS DIGITAL Solution Disk containing the following software:

- EOS Utility (Win/Mac)
- Digital Photo Professional (Win/Mac)
- Picture Style Editor (Win/Mac)
- ImageBrowser EX (Win/Mac)
- PhotoStitch (Win/Mac)

CUSTOM FUNCTIONS

- C.FN 1: IMAGE**
- Exposure level increments
 - ISO speed setting increments
 - Bracketing auto cancel
 - Bracketing sequence
 - Number of bracketing shots
 - Safety shift
- C.FN 2: DISP/OPERATION**
- Warning 2 in viewfinder
 - LV shooting area display
 - Dial direction during Tv/Av
 - Multi-function lock
 - Custom Controls
- C.FN 3: OTHERS**
- Add cropping information (Formerly "Add aspect ratio information")
 - Default Erase option