

EOS
DIGITAL

 **CHIA**
www.chiacolorlab.com
เช็ทคัลเลอร์แลป 074-246808


Canon
Delighting You Always

B E H O L D



EOS-1D X

DEFINED
BY PURITY
OF FORM

1

A contemporary icon symbolizing the synthesis of raw power, film-bred technology and excellence in digital imaging quality.

BEHOLD

The New
CANON EOS-1D X

EOS-1D X

The EOS-1D X is a lesson in discerning tastes and bold performance.

Proudly bearing the legendary number one in its name, the EOS-1D X displays all the hallmarks of the revolutionary EOS-1D Series. With its Dual DIGIC 5+ Imaging Processors, the EOS-1D X is capable of producing up to a super high-speed 14 fps of continuous shooting, and thanks to an 18.1-megapixel full-frame CMOS sensor and an innovative reflex mirror mechanism, such performance is delivered with exceptional precision and composure.

18.1 MEGA
PIXELS
CMOS

DIGIC
5+

Upto
12.0
Frames
Per Sec

Upto
61
High Density
Reticular AF

ISO
51200
25600

EOS Movie
FULL HD

Defining the future of photography; it is a daring claim but one that Canon's EOS-1D Series fully deserves. From the very first EOS-1D that revolutionized the photography field with its bold imaging power, every DSLR that followed has never failed to live up to the greatness of this flagship series. Long held in high regard by leading photographers in the industry, the trust of professionals is the blueprint on which Canon DSLRs are built upon. Time and time again, it has been an iconic DSLR that has carried this fine tradition and blazed the trail for other cameras to follow. Now welcome the new EOS-1D X.



THE TECHNOLOGY DNA

A RELENTLESS PURSUIT OF NEW AND IMPROVED SOLUTIONS TO THE CHALLENGES IN AN EVER-SHIFTING WORLD OF PHOTOGRAPHY



technology

18.1-MEGAPIXEL

Full-Frame CMOS Sensor

The prestige of full-frame photography is realized with the EOS-1D X's new 18.1-megapixel full-frame CMOS sensor. With larger pixels, gapless microlens array and an improved signal-to-noise ratio, the results are of higher clarity, brilliant colors, less noise and stunning image quality even in extreme low-light conditions.



DUAL DIGIC 5+

Imaging Processors

Featuring the latest generation of imaging processors in the EOS DSLR camera line-up, the EOS-1D X now comes effortlessly powered by Dual DIGIC 5+ Imaging Processors. Capable of delivering approximately 17 times the processing speed of the DIGIC 4, the new Dual DIGIC 5+ processors allow for a significant increase in signal processing, rapid-fire continuous shooting speeds, and sharp image details.



SUBSTANTIAL ISO

Speed Range

The EOS-1D X truly excels in low-light shooting conditions with the widest ISO speed selection range ever offered in an EOS DSLR camera. Beginning as low as ISO 100 to an all-high of ISO 51,200 for the standard range, this suffices for studio works and landscape photography. Three additional settings of L for ISO 50, H1 for ISO 102,400 and H2 for ISO 204,800 make the EOS-1D X ideal to cover a wide range of shooting in differently lit conditions.

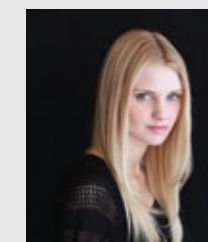


precision

100,000-PIXEL RGB Metering Sensor NEW

The EOS-1D X has a brand-new RGB metering sensor with approximately 100,000 pixels, and performs general metering in 252 zones or 35 zones for low-light metering. A dedicated DIGIC 4 processor supports uncompromising stable metering performance even under extreme temperatures and high humidity.

The new EOS Intelligent Subject Analysis (iSA) system performs review on color information and subject detection for positive compensation of appropriate exposure. The EOS iSA also enhances most of the camera's other functions like exposure, autofocus, and Auto Lighting Optimizer, for perfect image quality.



The ideal exposure is reliably obtained even in low-light condition



100,000-pixel RGB metering sensor

12 FPS Continuous Shooting NEW

Up to 12.0
Frames
Per Sec



Potent high-speed shooting performance from the EOS-1D X is assured by smooth combination of 16-channel signal readout from its 18.1-megapixel CMOS sensor and Dual DIGIC 5+ imaging processors. In One-Shot AF mode, an amazing continuous shooting speed of 12 frames per second is achieved.

In Super High-Speed Mode, an incredible world-first* shooting speed of up to 14 frames per second is possible. A new mirror system with a Quad Active Mirror Stopper absorbs impact and greatly reduces mirror vibration for constantly steady shots.

FAST PACE FOR PERFORMANCE

GROUNDBREAKING MULTIFACETED INNOVATIONS
FOR SHOTS WITH A LASTING IMPACT

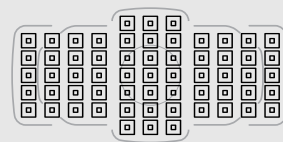
precision



61-POINT *High-Density Reticular AF*

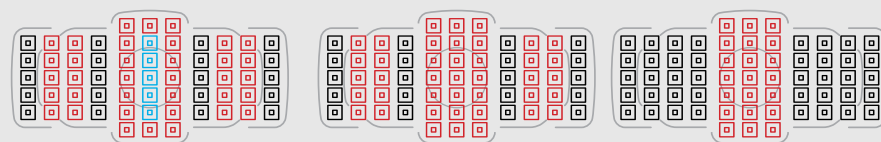


AF SENSOR



AF 61-POINTS

A pack-leader by nature, the new EOS-1D X features the next-generation Auto Focus (AF) system developed by Canon. This sophisticated system displays a 61-Point High-Density Reticular AF with 41 cross-type points that provide wider AF coverage, exceptional high-precision focusing, and increased subject tracking capability.



F/2.8 LENSES*

Cross-type AF 41 points, includes dual-cross AF (five points) at center

F/4.0 LENSES*

Cross-type AF 41 points

F/5.6 LENSES*

Cross-type AF 21 points

There are 41 cross-type AF points which include five central dual cross-type AF points for a maximum aperture of f/2.8 (diagonal). Another 21 points in center position serve as standard precision cross-type points at apertures as small as f/5.6, and another 20 outer cross-type points for focusing at f/4.0.

The new AF system has heightened sensitivity in low-light conditions, thanks to an improved pixel configuration, thus allowing the EOS-1D X to focus up to EV-2 at central AF points with an f/2.8 lens.

*Number of available AF points and cross-type points vary depending on the lens

AF CONFIGURATION *Tool*



With the high-density reticular AF system comes a new AF Configuration Tool that controls AI Servo AF parameters to suit various shooting conditions. These parameters determine tracking sensitivity, acceleration and deceleration of tracking subjects, and AF point auto switching.

The AF Configuration improves ease of use under various shooting scenarios — versatile multi-purpose setting, continued tracking of subject while ignoring possible obstacles, instant focusing on new subjects entering AF field, tracking subjects rapidly accelerating or decelerating, tracking erratic subjects, and tracking erratic subjects that change speeds.

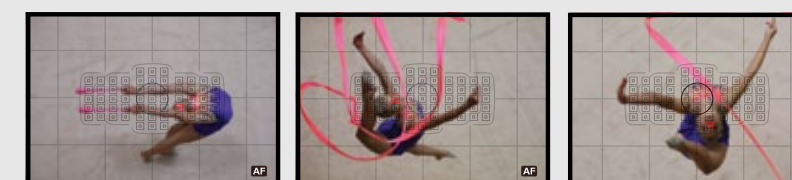
- Versatile multi purpose setting
- Continue tracking, ignoring obstructions
- Instant focus on subjects suddenly entering AF points
- Subjects that accelerate or decelerate quickly
- Erratic subject movement
- Subjects that change speed and move erratically

EOS iTR *AF Options*



One of the many new leading-edge innovations packed into the Canon EOS-1D X is the remarkable EOS Intelligent Tracking and Recognition (iTR). On top of the default AF information in the camera, there is now an option to utilize color information and face detection to track a subject.

Tracking and focusing a subject based on color information and face detection technologies make it plain sailing for photographers to concentrate on composition, especially for sports and event photography.



creative mode

EOS SCENE DETECTION System

This highly perceptive system is incorporated into the EOS-1D X to automatically examine the conditions of a scene being shot, to gather information on the subject's face, color, brightness, movement, contrast, and distance. The system then relays the information to related features like Picture Style, Auto White Balance, Auto Lighting Optimizer, Auto Focus, and Auto Exposure.

PICTURE STYLE *Auto*



New with the EOS-1D X is the Picture Style Auto feature that will finely adjust color tones for each image based on information gathered from the EOS Scene Detection System. This intuitive feature is exceptionally effective for nature and outdoor scenes, as well as sunset scenes.

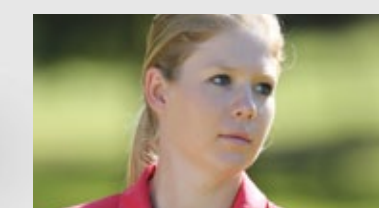
However, the option to finer tune captured scenes is still available with the existing Picture Style feature with its six standard presets – Standard, Portrait, Landscape, Neutral, Faithful, and Monochrome.



Auto LIGHTING OPTIMIZER



Based on information collated from the EOS Scene Detection System, the Auto Lighting Optimizer will automatically adjust brightness and contrast levels for captured images to achieve optimal and balanced exposure. This function corrects underexposed images and low contrast images captured under various conditions including the newly added sunset scene, high-saturation scene, and scenes with highlights.



INTRINSIC PICTURE PERFECTION

THE LATEST SOPHISTICATED FEATURES THAT PRODUCES THE FINEST OF PHOTOGRAPHS

MULTIPLE EXPOSURE Mode



Yet another first in an EOS DSLR camera is the EOS-1D X's Multiple Exposure mode. This nifty feature enables a combination of between two to nine individual images of varying exposures into a single composite image. Four different settings are available for greater degree of control – Additive, Average, (Comparative) Bright, or (Comparative) Dark.

After capturing each exposure, the resulting multi-exposure composite can be examined in real time on the LCD monitor, with the option to delete and re-shoot the last exposure shot. It is even possible to begin a multi-exposure composite image with a previously captured image already saved in the CF card.

MULTIPLE EXPOSURE CONTROL

Additive | Average | (Comparative) Bright | (Comparative) Dark



ADDITIVE

Combination of two individual images of varying exposures into a single composite image





In-camera RAW IMAGE PROCESSING

The EOS-1D X comes stored with correction data for 29 lenses and is capable of containing a total of 40 different lens data, which are essential for the camera to perform peripheral illumination correction, distortion correction, and chromatic aberration correction. As each lens has different attributes, lens data must first be registered into the EOS-1D X using the EOS Utility software.

Peripheral illumination correction smartly minimizes the vignette sometimes seen around the corners of images. Distortion correction expands the peripheral portion of the image out of the frame for the corrected amount of distorted area. Chromatic aberration correction comes built-in with the EOS-1D X and is now improved with no trimming of peripheral portion.



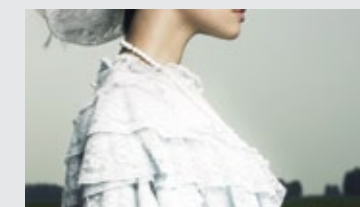
Vignetting



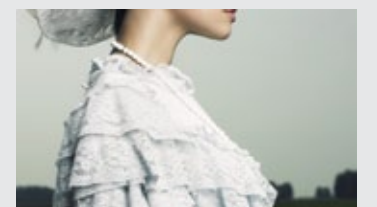
Peripheral illumination correction

HIGHLIGHT TONE *Priority*

The Highlight Tone Priority function gives your subjects a better and more lifelike color rendition by extending the dynamic range within highlight areas by approximately 1 stop. This reduces the loss of detail in highlight areas and prevents your images from appearing washed out when shooting in bright conditions. When Highlight Tone Priority is enabled, a “D+” symbol is displayed in the viewfinder and on the LCD panel.



Highlight Tone Priority: Disabled



Highlight Tone Priority: Enabled



IDEAS ON THE MOVE

FULL HD VIDEO CAPTURE THAT DELIVERS STUNNING PERFORMANCE AND ALLOWS STREAMLINED EDITING

Advanced EOS MOVIE



With the new 18.1-megapixel full-frame CMOS sensor and Dual DIGIC 5+ processors powering its core, the EOS-1D X now captures HD video with significantly reduced moiré, even at high ISO speeds. As with the EOS-1D Mark IV, the EOS-1D X can also record at Full HD 1920 x 1080 resolution in various selectable frame rates.

Besides a vastly improved HD video quality, the new CMOS sensor also drives the new HD video formats that will streamline post-production workflow. The ALL-I compression format results in larger file sizes but makes for an edit-friendly format, as individual compressed frames are not linked to one another. The IPB compression format performs greater compression for smaller file sizes while maintaining high image quality found in previous versions of EOS Movie.

In acknowledgement to its following of film-makers and videographers, the EOS-1D X now comes equipped with SMPTE-compliant time code embedding, and recording in P, Av, TV and Manual modes.

PLAYBACK & Editing

Recorded movies can be viewed on the camera itself or on a TV via the HDMI or AV cable connection. The EOS-1D X also enables editing out the first and last scenes of a movie in 1 sec. increments, which can be then saved as a separate file or to overwrite the original movie file.

DUAL CF Card Slots ^{NEW}

To fulfill the request of professional photographers, dual CF card slots are included in the EOS-1D X for immediate image and footage back up, and increased data storage capacity. Movie recording is no longer limited by a 4GB movie file size. For seamless shooting, when the current card becomes full, the camera switches to the other card automatically. The recording limit for movie clips is 29 minutes and 59 seconds.



BUILT-IN Microphone

The EOS-1D X's built-in microphone with automatic adjustment of recording volume and a wind filter feature. For stereo sound recording, an optional external microphone can be connected to the camera's external microphone jack.

LIVE VIEW Shooting ^{LiveView MODE}

The EOS-1D X is the first of the EOS 1 Series to be equipped with an electronic first curtain shutter for better exposure control and for minimal shutter drive vibration during Live View shooting. Based on feedback from professional photographers, a new mode has been added for disabling exposure simulation when using EOS Utility to perform Remote Live View shooting.

INTUITIVE HANDLING

SO VERSATILE AND HIGHLY INTELLIGENT
THAT OPERATION COMES AS SECOND NATURE

High-Clarity

3.2" CLEAR VIEW II LCD



8.1cm/3.2" LCD
ClearView II

Never miss the minutest detail with the 3.2-inch Clear View II LCD monitor featuring approximately 1.04 million dots, a wide viewing angle, and near-faithful natural color reproduction. The high-resolution LCD display makes viewing easier with reduced external light reflection, thanks to an anti-reflection coating on its glass surface and liquid crystal panel. As a result, the LCD displays high contrast images with richer blacks.



Definitive

VIEWFINDER OPTICS



Approx.
100%
Viewfinder

One of many firsts in the EOS 1 Series is the EOS-1D X's translucent liquid crystal display, which provides AF information display and grid display, designed to further enhance the accuracy of subject capture. The EOS-1D X shares with the EOS-1D Mark IV, a similar viewfinder with 100% coverage, a 35° angle of view and 0.76x magnification.



EASE *of Operation*

Drawing inspiration from the needs of pro photographers, the EOS-1D X flaunts a revamped layout of camera controls for seamless operation. The new Multi-Function button is placed for easy concurrent use with the shutter button. Even when shooting vertically, the camera's vertical grip is shaped for easy access to these buttons.



Other buttons strategically placed on the EOS-1D X are the White Balance Selection button, Live View/Movie shooting button, Quick Control button, and the Image Size Selection button. Shooting buttons are now larger and marked for quicker recognition.

AUTOFLASH *Features*

Engaging the E-TTL II autoflash algorithm, the EOS-1D X executes pre-flash firing that weighs and averages flash metering for the subject, and analyzes lens distance information. This algorithm ensures superior flash accuracy and optimum exposure, and now includes gathering of color information and face detection.

Swift BUILT-IN WIRED LAN

In response to the need for stable and rapid wired workflow, the EOS-1D X's built-in wired LAN feature is capable of carrying out high-speed image transfers to an FTP server. The wired LAN connection also makes it possible to execute remote shooting with EOS Utility and the external WFT accessory. Captured images can then be viewed and downloaded remotely, or viewed on a DLNA-compatible device.



TIME SYNC *Between Cameras*

Through the EOS-1D X's wired LAN function, the clocks of up to 10 cameras can be set at once with a marginal difference of only ± 0.05 seconds. The new time synchronization proves especially useful in shooting sporting events with multiple EOS-1D X cameras, in order to organize shots chronologically.

AN ICONIC TOUGHNESS

THE EOS-1D X IS A VERITABLE TITAN AMONG DIGITAL SLRS —
A MAGNESIUM ALLOY BODY IS JUST THE BEGINNING.



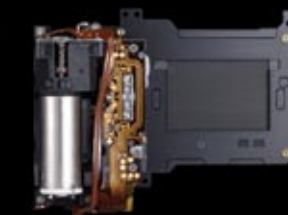
Powerhouse STRUCTURE

A balance of sturdy external housing and lightweight internal construction is achieved by the EOS-1D X's magnesium alloy major covers, which are then coated with long-lasting black paint for a light yet solid grasp.



Dust & Water RESISTANT

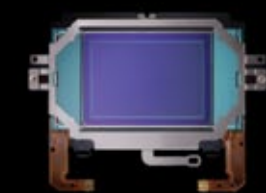
Constructed for top-notch performance in the harshest shooting environments, the EOS-1D X is completely trimmed with drip-proof and dust-proof measures at 76 joints between controls and external covers. With drip- and dust-proof EF lenses and EX-series Speedlites, the EOS-1D X system will deliver sterling results regardless of conditions.



High Shutter DURABILITY

Greatly improved from the EOS-1D Mark IV's shutter durability, the EOS-1D X's new carbon fiber shutter blades achieve an astounding 400,000 shutter cycles. These light, thin yet durable shutter blades are essential in achieving the high-speed continuous shooting demands of the camera.

*The shutter unit has passed a release test of 400,000 actuations.
(The test was conducted internally and based on standard shooting conditions).



Self-Cleaning SENSOR UNIT

Another new Canon innovation incorporated into the EOS-1D X is its second-generation self-cleaning sensor unit, using Ultrasonic Wave Motion Cleaning (UMWC). A carrier wave technology is utilized to remove even the smallest of dust particles from the sensor while a new fluorine coating on the infrared-absorbing glass works to greatly repel dust.

EOS ACCESSORIES



WIRELESS FILE TRANSMITTER
WFT-E6

Custom created for the EOS-1D X is the new Wireless File Transmitter WFT-E6 for improved workflow efficiency in various shooting conditions. The transmitter features an upgraded wireless LAN support for IEEE802.11n network transfer rate, enabling speedy image transfer from the camera to an FTP server.

The WFT-E6 also comes equipped with Bluetooth capabilities to obtain location information via external GPS units and attach the information to captured images. Using EOS Utility software, photographers are able to shoot remotely, perform image transfers, and control camera settings.

Through the wireless LAN function, linked shooting is possible with up to ten slave cameras in sync with a master camera's release. This allows subjects such as wildlife and high-speed sports action to be captured from many different angles.

SPEEDLITE TRANSMITTER
ST-E3-RT

For more advanced flash photography, the new Speedlite Transmitter ST-E3-RT is a handy device for communicating with other Speedlites using radio transmissions. This transmitter can control five groups and up to 15 Speedlites 600EX-RT slave units through radio-controlled, two-way wireless transmissions up to 30 meters.



GPS RECEIVER
GP-E1

For photographers on the move and out on the hunt for that ideal image, a highly sensitive yet stable GPS receiver can be of great help. By obtaining location details through GPS satellite signals and geographically tagging while shooting, captured images now have a place of origin.

This is especially crucial for photographers in foreign lands and need precise location information for reporting. Photographers who are constantly on the go will also find the GP-E1 useful for location scouting in unmapped areas. The GP-E1 comes equipped with a digital compass and performs time synchronization with the camera's clock.



COMPLIMENTARY PAIRING

SELECT CHOICES OF CAMERA ACCESSORIES TO BETTER COMPLETE A FULFILLING PHOTOGRAPHIC EXPERIENCE.

EXTERNAL FLASH FEATURES SPEEDLITE 600EX-RT SPEEDLITE 600EX



SPEEDLITE
600EX-RT

SPEEDLITE
600EX

Introducing the rising stars in the Speedlite range — the brilliant Speedlite 600EX-RT and 600EX. Designed to meet the EOS-1D X's demanding imaging capabilities, these flash units handle intense studio shooting sessions with relative ease. Powerful lighting is ensured with a guide number of 60 at 200mm focal length, and the flash units easily support wide-angle lenses up to 20mm, making them ideal for use with a wide range of lenses on the EOS-1D X. A wide-area AF-assist beam that covers all 61 AF points of the EOS-1D X further refines the camera's auto-focusing performance. Both flash units possess improved hot shoe reliability, heat resistance and durability.

The Speedlite 600EX-RT features an added attribute for excellence in multi-flash shooting by displaying absolute command in situations with multiple cameras. Shooting is made more flexible with multiple flash units, as slave units can now be changed from a master unit. With radio wave communication, the camera can be triggered to shoot via a slave flash unit. For situations requiring multiple linked cameras, a master unit is used to release all shutters simultaneously. The Canon Speedlite 600EX-RT and 600EX truly illuminate your photographic vision.

EF LENSES

*THROUGH THE
EYES OF EOS*VIEW THE WORLD FROM NEW ANGLES AND DIFFERENT
PERSPECTIVES WITH THE MOST COMPREHENSIVE
SYSTEM OF INTERCHANGEABLE LENSES.

EF28mm f/2.8 IS USM

EF28MM F/2.8 IS USM
EF24MM F/2.8 IS USM

Introducing the new EF24mm f/2.8 IS USM and the EF28mm f/2.8 IS USM as the first wide-angle single-focus lenses to feature a built-in image stabilizer, which achieves the equivalent effect of up to four stops faster.

These diminutive and lightweight lenses are easy to operate, with the ring ultrasonic motor (USM) and optimized autofocus algorithms for quick and quiet focusing, high-speed autofocus, full-time manual focus, and a circular aperture for soft-focus images.



EF24mm f/2.8 IS USM

The EF24mm f/2.8 IS USM has a shorter minimum focusing distance of 0.2 meters compared to its former model, and this lets photographers get closer to the subject. The EF28mm f/2.8 IS USM also features a shorter minimum focusing distance of 0.23 meters than the conventional model.



EF24-70MM
F/2.8L II USM

A high-performance large-aperture L-series standard zoom lens with a wide focal length, the EF24-70mm f/2.8L II USM inherits many fine qualities while displaying great character of its own as well.

Employing three aspheric lens elements, one Super UD lens element, and two UD lens elements, magnification-type chromatic aberration at wider angles is corrected to achieve super high image quality.

Sporting a new compact size, this lens is built highly durable and tough to withstand harsh conditions and the rigours of frequent use. This responsive lens comes with fast yet silent autofocus, a mechanical manual focus, and a circular aperture for beautiful soft-focus images. With minimum focusing distance of 0.38 meters and magnification of 0.21x, this lens is also perfect for close-ups.

Featuring an extensive range of more than 60 lenses, Canon's world-renowned EF lenses are crafted specially to deliver the vision of the EOS line of DSLRs. Held in high esteem by pro photographers, the comprehensive EF lens system remains the undisputed professional benchmark. Backed by decades of determined research and innovation, each and every EF lens is designed by Canon to meet the highest standards in exceptional optical performance and stunning image clarity.

NOMENCLATURE SPECIFICATIONS

NOMENCLATURE



TYPE

- Type : Digital, single-lens reflex, AF/AE camera
- Recording media : Type 1 or II CF card, UDMA mode 7-compatible
- Image sensor size : Approx. 36 x 24 mm
- Compatible lenses : Canon EF lenses (except EF-S lenses)
(35 mm-equivalent lens focal length will be as indicated on the lens)
- Canon EF mount

IMAGE SENSOR

- Type : CMOS sensor
- Effective pixels : Approx. 18.10 megapixels
- Aspect ratio : 3:2
- Dust delete feature : Auto, Manual, Dust Delete Data appending

RECORDING SYSTEM

- Recording format : Design rule for Camera File System (DCF) 2.0
- Image type : JPEG, RAW (14-bit Canon original), RAW+JPEG simultaneous recording enabled
- Recorded pixels : L (Large): Approx. 17.90 megapixels (5184 x 3456)
- M1 (Medium 1): Approx. 14.20 megapixels (4608 x 3072)
- M2 (Medium 2): Approx. 8.00 megapixels (3456 x 2304)
- S (Small): Approx. 4.50 megapixels (2592 x 1728)
- RAW: Approx. 17.90 megapixels (5184 x 3456)
- M-RAW: Approx. 10.10 megapixels (3888 x 2592)
- S-RAW: Approx. 4.50 megapixels (2592 x 1728)
- 10 levels

JPEG quality

- Recording function : Standard, Auto switch card, Record separately, Record to multiple
- Create/select a folder : Preset code, User setting 1, User setting 2
- File numbering : Continuous, Auto reset, Manual reset

IMAGE PROCESSING DURING SHOOTING

- White balance : Auto, Standard, Portrait, Landscape, Neutral, Faithful, Monochrome, User Def. 1 - 3
- Auto, Preset (Daylight, Shade, Cloudy, Tungsten light, White fluorescent light, Flash), Custom, Color temperature setting (Approx. 2500-10000K), Personal white balance (5 settings), White balance correction, and White balance bracketing possible
- * Flash color temperature information transmission enabled
- Applicable to long exposures and high ISO speed shots
- * Auto Lighting Optimizer
- Provided
- * Peripheral illumination correction, Chromatic aberration correction

VIEWFINDER

- Type : Eye-level pentaprism
- Coverage : Vertical/Horizontal approx. 100%
(with Eye point approx. 20 mm)
- Approx. 0.76x (4 m⁻¹ with 50 mm lens at infinity)
- Approx. 20 mm (from eyepiece lens center at 4 m⁻¹)
- Approx. -3.0 - +1.0 m⁻¹ (dpt)

NOISE REDUCTION

- Automatic image brightness correction
- Highlight tone priority
- Lens aberration correction
- Provided
- * Peripheral illumination correction, Chromatic aberration correction

MIRROR

- Depth-of-field preview : TTL secondary image-registration, phase detection
- AF points : 61 points (Up to 41 cross-type points)
- * Number of available AF points and cross-type points vary depending on the lens.
- EV-2 - 18 (with center f/2.8 AF point, at 23°C/73°F; ISO 100)

FOCUSING

- brightness range : TTL secondary image-registration, phase detection
- Focus modes : 61 points (Up to 41 cross-type points)
- AF area selection modes : 61 points (Up to 41 cross-type points)
- EV-2 - 18 (with center f/2.8 AF point, at 23°C/73°F; ISO 100)

AF POINT AUTOMATIC SELECTION CONDITIONS

- One-Shot AE, AI Servo AF, Manual focusing (MF)
- Single-point Spot AF (manual selection), Single-point AF (manual selection), AF point expansion (manual selection; up, down, left, and right), AF point expansion (manual selection; surround), Zone AF (manual selection), Auto selection of 61 AF points
- Depending on EOS iTR AF setting (AF using color and face detection information possible)
- * iTR: Intelligent Tracking and Recognition

EXPOSURE CONTROL

- Metering modes : Approx. 100,000-pixel RGB metering sensor and 252-zone TTL metering at max. aperture
- EOS ISA (Intelligent Subject Analysis) system
- Partial metering (approx. 6.5% of viewfinder at center)
- Spot metering (approx. 2.3% of viewfinder at center)
- Center-weighted average metering
- EV 0 - 20 (at 23°C/73°F with EF50mm f/1.4 USM lens, ISO 100)
- * Spot metering: EV 2 - 20
- Program AE, Shutter-priority AE, Aperture-priority AE, Manual exposure, Bulb exposure
- Auto ISO, manually settable within ISO 100 - 51200 (1/3-stop or whole-stop increments), and expandable to L (Equivalent to ISO 50), H1 (Equivalent to ISO 102400), H2 (Equivalent to ISO 204800)

METERING RANGE

- ISO speed : Auto ISO, manually settable within ISO 100 - 51200 (1/3-stop or whole-stop increments), and expandable to L (Equivalent to ISO 50), H1 (Equivalent to ISO 102400), H2 (Equivalent to ISO 204800)
- ISO speed range, Auto ISO range, and Auto ISO minimum shutter speed settable
- Manual: ± 5 stops in 1/3- or 1/2-stop increments
- AEB: ± 3 stops in 1/3- or 1/2-stop increments
- (Can be combined with manual exposure compensation)
- Auto: Applied in One-Shot AF mode with evaluative metering when focus is achieved
- Manual: By AE lock button
- AE Microadjustment possible

EXPOSURE CONTROL

- ISO speed settings : Auto ISO, manually settable within ISO 100 - 51200 (1/3-stop or whole-stop increments), and expandable to L (Equivalent to ISO 50), H1 (Equivalent to ISO 102400), H2 (Equivalent to ISO 204800)
- ISO speed range, Auto ISO range, and Auto ISO minimum shutter speed settable
- Manual: ± 5 stops in 1/3- or 1/2-stop increments
- AEB: ± 3 stops in 1/3- or 1/2-stop increments
- (Can be combined with manual exposure compensation)
- Auto: Applied in One-Shot AF mode with evaluative metering when focus is achieved
- Manual: By AE lock button
- AE Microadjustment possible

MULTIPLE EXPOSURES

- Shooting method : Function/control priority, Continuous shooting priority
- Number of multiple exposures : 2 to 9 exposures
- Multiple-exposure control : Additive, Average, Bright, Dark

SHUTTER

- Type : Electronically-controlled, focal-plane shutter
- Shutter speeds : 1/8000 sec. to 30 sec., Bulb (Total shutter speed range. Available range varies by shooting mode.), X-sync at 1/250 sec.

DRIVE SYSTEM

- Drive modes : Single, High-speed continuous, Low-speed continuous, 10-sec. self-timer, 2-sec. self-timer, Silent single shooting, Super high-speed continuous
- Super high-speed continuous shooting: Max. approx. 14 shots/sec. shooting speed
- High-speed continuous shooting: Max. approx. 12 shots/sec.
- Low-speed continuous shooting: Max. approx. 3 shots/sec.
- * When the ISO speed is set to 32000 or higher, the maximum continuous shooting speed will be approx. 10 fps

EXTERNAL SPEEDLITE

- Compatible Speedlites : EX-series Speedlites
- Flash metering : E-TTL II autoflash
- Flash exposure level adjustment : ± 3 stops in 1/3- or 1/2-stop increments
- External Speedlite control : Provided
- * Compatible with radio wireless flash photography

LIVE VIEW SHOOTING

- Focus modes : Live mode, Face detection Live mode (contrast detection), Quick mode (phase-difference detection), Manual focusing (approx. 5x/10x magnification possible)
- Metering modes : EV 0 - 20 (at 23°C/73°F with EF50mm f/1.4 USM lens, ISO 100)
- EV 0 - 20 (at 23°C/73°F with EF50mm f/1.4 USM lens, ISO 100)
- Metering range : EV 0 - 20 (at 23°C/73°F with EF50mm f/1.4 USM lens, ISO 100)

MOVIE SHOOTING

- Movie recording MPEG-4 AVC/H.264 compression : Variable (average) bit rate
- Audio recording format : Linear PCM
- Recording format : MOV
- Recording size and frame rate : 1920x1080 (Full HD): 30p/25p/24p
1280x720 (HD): 60p/50p
640x480 (SD): 30p/25p
*30p: 29.97 fps, 25p: 25.00 fps, 24p: 23.976 fps, 60p: 59.94 fps, 50p: 50.00 fps

COMPRESSION METHOD

- File size : ALL-I (I-only): I/PB: Approx. 235 MB/min.
1920x1080 (30p/25p/24p)/ALL-I: Approx. 685 MB/min.
1280x720 (60p/50p)/I/PB: Approx. 205 MB/min.
1280x720 (60p/50p)/ALL-I: Approx. 610 MB/min.
640x480 (30p/25p)/I/PB: Approx. 78 MB/min.
* Card reading/writing speed necessary for movie shooting: I/PB: at least 10 MB per sec./ALL-I: at least 30 MB per sec.

FOCUS MODES

- Metering modes : Same as focusing with Live View shooting
- Metering range : EV 0 - 20 (at 23°C/73°F with EF50mm f/1.4 USM lens, ISO 100)
- Exposure control : 1. Autoexposure, 2. Shutter-priority AE, 3. Aperture-priority AE, 4. Manual exposure
- * With 1, 2, and 3, exposure compensation and AE lock are possible.
- * 1/3-stop increments, ± 3 stops (± 5 stops for still photos)
- * P, Av, and BULB: ISO 100 - 25600 set automatically, or ISO expansion to H (equivalent to ISO 51200), H1 (equivalent to ISO 102400), H2 (equivalent to ISO 204800)
- Tv: ISO 100 - 25600 set automatically
- M: Auto ISO ISO 100 - 25600 set automatically, ISO 100 - 25600 set manually (in 1/3- or whole-stop increments), or ISO expansion to H (equivalent to ISO 32000/40000/51200), H1 (equivalent to ISO 102400), H2 (equivalent to ISO 204800)

EXPOSURE CONTROL

- Exposure compensation ISO speed (Recommended exposure index) : EV 0 - 20 (at 23°C/73°F with EF50mm f/1.4 USM lens, ISO 100)
- ISO speed : Auto ISO, manually settable within ISO 100 - 51200 (1/3-stop or whole-stop increments), and expandable to L (Equivalent to ISO 50), H1 (Equivalent to ISO 102400), H2 (Equivalent to ISO 204800)
- ISO speed range, Auto ISO range, and Auto ISO minimum shutter speed settable
- Manual: ± 5 stops in 1/3- or 1/2-stop increments
- AEB: ± 3 stops in 1/3- or 1/2-stop increments
- (Can be combined with manual exposure compensation)
- Auto: Applied in One-Shot AF mode with evaluative metering when focus is achieved
- Manual: By AE lock button
- AE Microadjustment possible

TIME CODE

- Drop frames : Compatible with 60p/30p
- Sound recording : Built-in monaural microphone, external stereo microphone terminal provided
- Sound recording level adjustable, wind filter provided
- Three types
- Supported
- Compatible with 60p/30p
- Built-in monaural microphone, external stereo microphone terminal provided
- Sound recording level adjustable, wind filter provided
- Three types

GRID DISPLAY

- Still photos shooting : Possible
- XC photo shooting : Possible

LCD MONITOR

- Type : TFT color, liquid-crystal monitor
- Monitor size and dots : Wide: 8.1 cm (3.2 in.) (3.2) with approx. 1.04 million dots
- Brightness adjustment : Manual (7 levels)
- Electronic level : Horizontal: 1° increments, ± 6°
Vertical: 1° increments, ± 4°
- Interface languages : 25
- Feature guide : Displayable
- Camera System status display : Provided

PLAYBACK

- Image display formats : Single-image display, Single-image + Info display (Basic info, shooting info, histogram), 4-image index, 9-image index display
- Highlight alert : Overexposed highlights blink
- AF point display : Possible
- Grid display : Three types
- Zoom magnification : Approx. 1.5x - 10x, starting magnification and position settable
- Image browsing methods : Single image, jump by 10 or 100 images, by shooting date, by folder, by movies, by stills, by rating
- Image rotate : Possible
- Movie playback : Enabled (LCD monitor, video/audio OUT, HDMI OUT)
- Built-in speaker
- Slide show : All images, by date, by folder, movies, stills, or by rating
- Image protect : Possible
- Voice memo : Recording/playback possible
- Copying images : Possible

POST-PROCESSING OF IMAGES

- In-camera RAW image processing : Brightness correction, White balance, Picture Style, Auto Lighting Optimizer, High ISO speed noise reduction, JPEG image-recording quality, Color space, Peripheral illumination correction, Distortion correction, and Chromatic aberration correction
- Resize : Possible
- Compatible printers : PictBridge-compatible printers
- Printable images : JPEG and RAW images
- Print ordering : DPOF Version 1.1 compatible

WIRED LAN

- Ethernet : 10BASE-T, 100BASE-TX, 1000BASE-T
- FTP transfer : Automatic transfer upon shooting, Image selection/transfer, Transfer with SET button, Transfer with caption
- EOS Utility : EOS Utility's remote control works with wired LAN
- WFT server : Camera control, simple control, basic shooting, image viewing, and downloading
- Media server : DLNA-compatible
- Multi camera time sync function : Master camera can synchronize time with up to 10 slave cameras
- Time error of approx. ± 0.05 sec. between master and slave cameras

IMAGE TRANSFER

- Transferable images : Still photos (JPEG, RAW, RAW+JPEG images), Movies

CUSTOM FUNCTIONS

- Custom Functions : 31
- Save camera settings : Up to ten sets can be registered in a card
- Custom shooting modes : Register under Mode Dial's C1/C2/C3
- My Menu registration : Possible
- Copyright information : Entry and inclusion enabled

INTERFACE

- Audio/video OUT/ Digital terminal : Analog video (Compatible with NTSC/PAL) stereo audio output
- Personal computer communication, Direct printing (Hi-Speed USB or equivalent), GPS Receiver GP-E2 connection
- HDMI mini OUT : Type C (Auto switching of resolution), CEC-compatible terminal
- External microphone IN terminal : 3.5 mm stereo mini-jack
- Remote control terminal : Compatible with N3-type remote controller
- Ethernet terminal : RJ-45 terminal, gigabit Ethernet compatible
- System extension terminal : For Wireless File Transmitter WFT-E6 and GPS Receiver GP-E1

POWER

- Battery : Battery Pack LP-E4N/LP-E4 (Quantity 1)
- * AC power can be supplied via AC Adapter Kit ACK-E4
- Battery information : Remaining capacity, Shutter count, and Recharge performance displayed
- Battery life (Based on CIPA testing standards) : With viewfinder shooting: Approx. 1120 shots at 23°C/73°F, approx. 860 shots at 0°C/32°F
- With Live View shooting: Approx. 290 shots at 23°C/73°F, approx. 250 shots at 0°C/32°F
- Approx. 2 hr. 10 min. at 23°C/73°F
- Approx. 2 hr. at 0°C/32°F
- * With a fully-charged Battery Pack LP-E4N
- * CR2025 lithium battery (Quantity 1)

DATE/TIME BATTERY

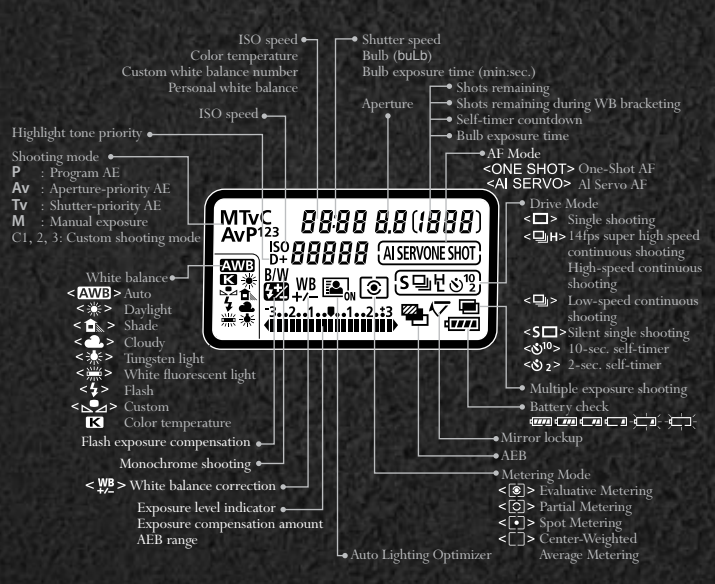
- Dimensions (WxHxD) : Approx. 158.0 x 163.6 x 82.7 mm / 6.2 x 6.4 x 3.3 in.
- Weight : Approx. 1530 g / 54.0 oz. (CIPA Guidelines), Approx. 1340 g / 47.3 oz. (Body only)

OPERATION ENVIRONMENT

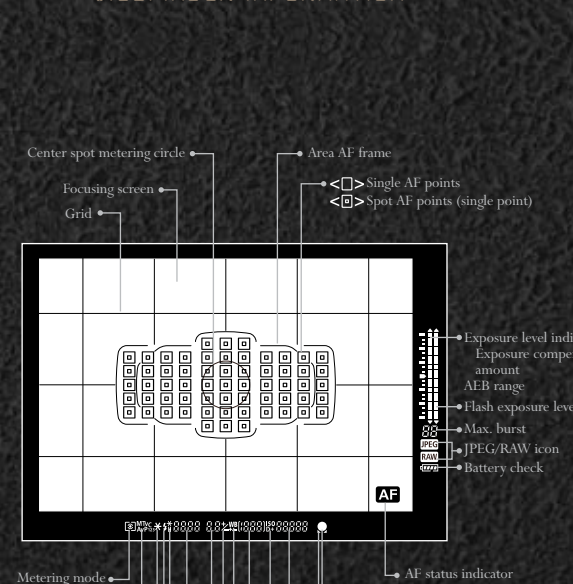
- Working temperature range : 0°C - 45°C / 32°F - 113°F
- Working humidity : 85% or less

* All the data above is based on Canon's testing standards and CIPA (Camera & Imaging Products Association) testing standards and guidelines.
 * Dimensions, maximum diameter, length and weight listed above are based on CIPA Guidelines (except weight for camera body only).
 * Product specifications and the exterior are subject to change without notice.
 * If a problem occurs with a non-Canon lens attached to the camera, consult the respective lens maker.
 * Dimensions, maximum diameter, length and weight listed above are based on CIPA Guidelines (except weight for camera body only).

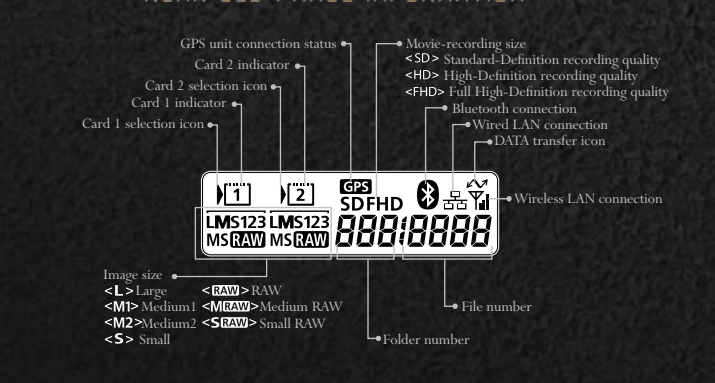
TOP LCD PANEL INFORMATION



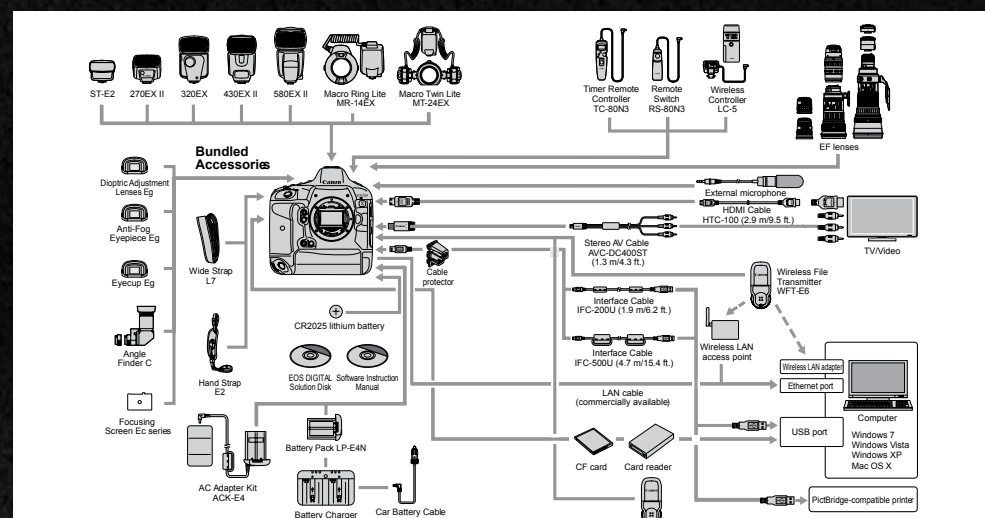
VIEWFINDER INFORMATION



REAR LCD PANEL INFORMATION



SYSTEM CHART



Canon

SOUTH & SOUTHEAST ASIA
REGIONAL HEADQUARTERS

CANON SINGAPORE PTE. LTD.

1 HarbourFront Avenue
#04-01 Keppel Bay Tower
Singapore 098632
Tel: 65-6799-8888
Fax: 65-6799-8882

www.canon-asia.com

Errors and omissions excepted.
Images are simulated.
Weight and dimensions are approximate.
Subject to change without notice.

Macintosh is a trademark of Apple Computer Inc., registered in the United States and other countries.
Microsoft® and Windows® are either registered trademarks or trademarks of Microsoft Corporation in the United States and/or other countries. Other names and products not mentioned above may be registered trademarks of trademarks of their respective companies.
SD Logo is a trademark. Canon is a registered trademarks of Canon Inc.

Warning: Unauthorized recording of copyrighted materials may infringe on the rights of copyright owners and be contrary to copyright laws.

BANGLADESH
J.A.N. Associates
Tel : 880-2-8611444
Fax : 880-2-8610410

BRUNEI
Interhouse Company
Tel : 673-2-653001
Fax : 673-2-653003

CAMBODIA
i-Click (Cambodia) Pte. Ltd.
Tel : 855-23-996638
Fax : 855-23-996639

INDONESIA
P.T. Datascrip
Tel : 62-21-2664-8999
Fax : 62-21-6544811-13
www.canon.co.id

MALAYSIA
Canon Marketing
(Malaysia) Sdn. Bhd.
Tel : 60-3-78446000
Fax : 60-3-78450505
www.canon.com.my

MALDIVES
SIMDI Company Pvt. Ltd.
Tel : 960-324819
Fax : 960-318433

MYANMAR
Myanmar Golden Rock
International Co., Ltd.
Tel : 95-1-202092/3/4
Fax : 95-1-202079

NEPAL
Primax International, Inc.
Tel : 977-1-4224079
Fax : 977-1-4229358

PAKISTAN
MBM International
Tel : 92-21-32277093/4
Fax : 92-42-37530948

SINGAPORE
Canon Singapore Pte. Ltd.
Domestic Operations
Tel : 65-6799-8888
Fax : 65-6799-8882
www.canon.com.sg

SRI LANKA
Metropolitan Office Pvt Ltd.
Tel : 94-011-4700200
Fax : 94-011-4700266

THAILAND
Canon Marketing
(Thailand) Co., Ltd.
Tel : 66-2-3449999
Fax : 66-2-3449922
www.canon.co.th

VIETNAM
Canon Singapore Pte. Ltd.
Ho Chi Minh City Representative
Office & Showroom
Tel : 848-382-00466
Fax : 848-382-00477
Hanoi Representative Office
Tel : 84-4-7711677
Fax : 84-4-7711678
www.canon.com.vn