

EOS
DIGITAL

 **CHIA**
www.chiacolorlab.com
เช็กลวดลาย 074-246808

Canon
Delighting You Always



SURPASS

compactness



EOS 100D

DYNAMIC PHOTOGRAPHY IN A NEW FORM WITH THE WORLD'S SMALLEST AND LIGHTEST DSLR* - EOS 100D



EOS 100D

THE DREAM CHASER

Every sunrise, every smile, every breathtaking view, and every delectable bite – capture all these and much more with the new EOS 100D, the world's smallest and lightest* digital SLR camera with an APS-C size CMOS sensor.



No compromising despite a smaller exterior, the EOS 100D still delivers high image quality, an excellent shooting performance and fun operability. Absolutely perfect for budding photographers, the EOS 100D comes with a Feature Guide function that will aid in understanding the camera better with constant use, and help develop latent photography skills.

The portable and lightweight EOS 100D proves a sheer joy to use, and sports an 18-megapixel APS-C size CMOS Sensor and a DIGIC 5 image processor. This classic core technology duo are the driving powers behind the 9-Point AF system, a continuous shooting speed of 4fps, the new Hybrid CMOS AF II, and brand new creative features. Chase your photographic fantasies and dreams with the new EOS 100D.

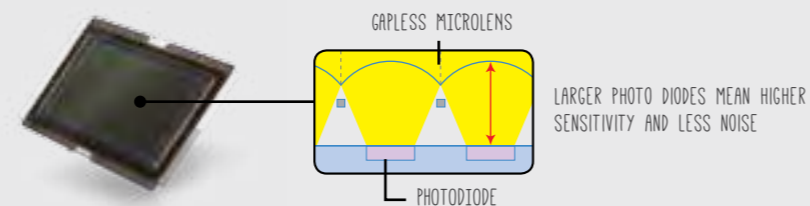
* Among the digital SLR camera which mounts on the APS-C size equivalent sensor.
Date of issue: 1st Mar 2013, Canon's research

HEAVYWEIGHT TECHNOLOGY



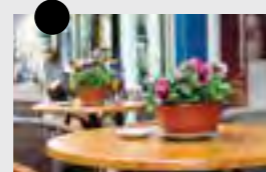
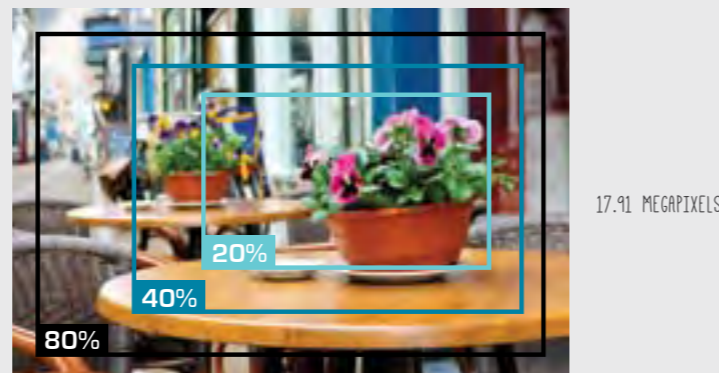
18-MEGAPIXEL APS-C SIZE CMOS SENSOR

The 18-megapixel APS-C size CMOS sensor equipped in the EOS 100D strikes the perfect balance between excellent image resolution and high sensitivity to light. Containing a gapless microlens array and larger photo diodes for greater light-gathering efficiency, the EOS 100D's sensor is capable of minimal noise at high ISO speeds and an expanded dynamic range.



All this groundwork laid by the CMOS sensor assures that the EOS 100D shoots images of high resolution, crystal clarity, and vivid colors, even at high ISO speeds without compromising on low-noise performance.

With an 18-megapixel resolution, images captured by the EOS 100D are of an optimal pixel count for producing high-quality prints of various photo paper sizes. Even if the image has been significantly cropped, printing on 3R and 5R sizes still retains rich colors and sharp lines.



DIGIC 5 IMAGE PROCESSOR

Partnering the CMOS sensor for top-notch shooting performance and high-quality images is the new DIGIC 5 image processor. The DIGIC 5 image processor helps the EOS 100D achieve ISO speeds of up to ISO 12800 and ISO 6400 for movie-shooting, thus producing images of natural colors, rich tonal gradation, accurate white balance, a wide dynamic range and enhanced noise reduction.



Incredibly fast processing speeds result in highly responsive shooting with quick start-up times and makes possible long continuous shooting bursts. The DIGIC 5 image processor also helps run complex features like Full HD movie recording, HDR Backlight, Multi Shot Noise Reduction and a high-speed continuous shooting at 4fps.



EXTENSIVE ISO RANGE

The EOS 100D confidently takes on the challenge of shooting in both light and low-lit environments with a standard range of ISO 100-12800, which can be expanded manually to ISO 25600. When ISO Auto is set, a sensitivity range of ISO 100-6400 is realized, and proves an ideal range for movie-shooting.

QUICK TIP!

A wide range of sensitivity settings increases the variety of shooting possibilities on the EOS 100D. Create dynamic images and capture motion with low ISO sensitivity and shutter speeds.



PORTRAITS

Use a wide aperture to create a large and appealing background blur when shooting in the bright outdoors while avoiding overexposure.



LANDSCAPES

Flowing water can be made to look silky smooth by greatly slowing down the shutter speed and using a tripod for sharp results.

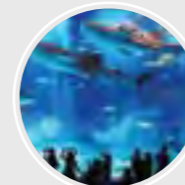
QUICK TIP!

High ISO speeds prevent blurring from camera shake or quick-moving subjects, especially in low-lit or flash-restricted environments.



INDOOR SPORTS

High-speed action in poorly-lit arenas or halls can be easily captured without blurring by shooting at fast shutter speeds.



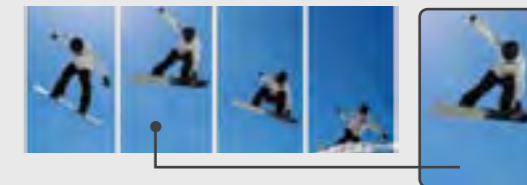
FLASH-RESTRICTED AREAS

Usually in museums, zoos and aquariums, shoot with a fast shutter speed to avoid blurring caused by camera shake.



HIGH-SPEED CONTINUOUS SHOOTING 4FPS

Fleeting moments and fast-paced subjects are best captured using a high-speed continuous shooting speed of 4fps. Enabled by the combined efforts of its 18-megapixel CMOS sensor and DIGIC 5 image processor, the EOS 100D ensures that a defining shot is never missed.



Create an action-packed sequence of four images with the EOS 100D continuously shooting at a maximum burst of approximately 28(1140*) shots in Large/Fine JPEG and 7(8*) shots in RAW format.

* With 8GB UHS-I compatible SD Card

QUICK TIP!

Shooting continuously also allows you to take your pick of the best shot out of the captured bunch, so you will never miss the best moments.

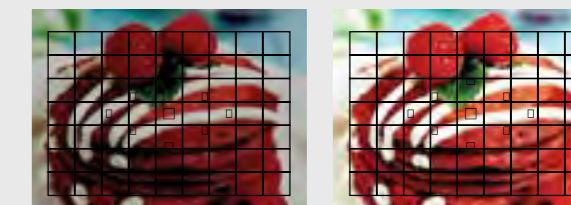


iFCL 63-ZONE DUAL LAYER METERING SYSTEM

The EOS 100D features an iFCL metering system with 63 zones that are compatible with all 9 AF points. This iFCL system uses focus, color and luminance information to consistently expose images regardless of lighting conditions.

Sometimes a subject with heavy red colours may be read by the system as being brighter than it truly is, therefore resulting in an underexposed image. The system corrects this by gathering lighting information from 63 separate zones in order to accurately determine the overall exposure.

A dual-layer design means the system consists of two layers, with one layer sensitive to red/green light and a second layer sensitive to blue/green light. It takes a combined reading of data from these two layers to provide a precise light reading.

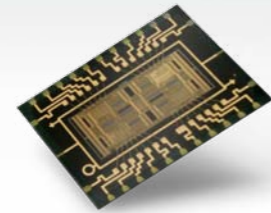




9-point AF

9-POINT AF SENSOR WITH CROSS-TYPE CENTER AF POINT

A 9-Point Auto-Focusing Sensor ensures that the EOS 100D delivers effective and high-speed AF performance under any shooting condition. The cross-type center AF point is both horizontal-line sensitive at $f/5.6$ and vertical-line sensitive at $f/2.8$, which translates to super precise and accurate tracking and focusing, even when shooting in portrait orientation.



AF SENSOR



LANDSCAPE



PORTRAIT

The AF system is further equipped with predictive AI Servo AF II, a subject-tracking feature employed in professional EOS DSLR cameras. This intelligent and intuitive AF method tracks and focuses on subjects swiftly and accurately, even if subjects move away from the center of the frame, by using the surrounding focus frame. With this feature, photographers are able to capture defining moments usually missed by a compact camera.

QUICK TIP!

If the camera is unable to lock focus on a subject, manually select the center AF point, which being cross-type, is both horizontal- and vertical-line sensitive, and locks focus more easily.



LIVE VIEW SHOOTING

The EOS 100D sports the latest Hybrid CMOS AF II with an expanded focusing area on the sensor that is dedicated to both phase-detection AF and contrast-detection AF. Even if the subject is nowhere near the center of the frame, rapid and accurate focusing is still managed due to a wider focus area covered by Hybrid CMOS AF II.

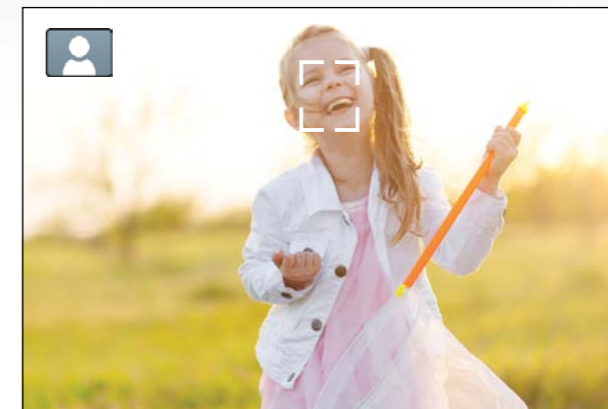
When used with the camera's Touch AF ability and paired with an STM lens, the EOS 100D achieves incredibly fast, smooth and more precise auto-focusing and tracking for keeping subjects in constant focus. Simply tap the Touch Screen LCD monitor to focus on any subject and release the shutter upon reaching sharp focus.

The EOS 100D has four AF methods in Live View shooting - Face Detection + Tracking Priority AF, FlexiZone - Multi AF, FlexiZone - Single AF, and Quick mode.

QUICK TIP!

Do not hesitate to follow your subject around, especially running children or pets, as you may obtain better shooting angles.

FACE DETECTION + TRACKING PRIORITY AF



Faces are detected, focused on and tracked. The AF point can be switched to any other face.

FLEXIZONE - MULTI AF



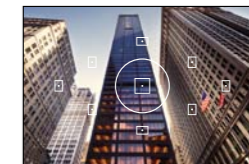
Live View FlexiZone - Multi AF makes it easier to focus on any subject, covering a wider area with an automatic selection of up to 31 AF points or touch the LCD monitor for 9 points zone selection.

FLEXIZONE - SINGLE AF



The subject is focused on by a single AF point and this AF point can be moved around by touching on the LCD monitor.

LIVE VIEW QUICK MODE



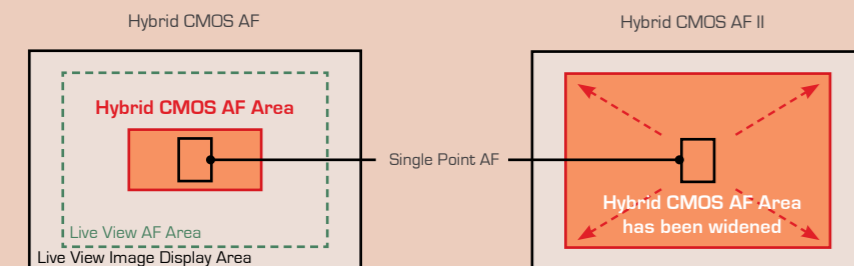
Quick mode uses phase-detection AF, so focusing is as quick as with the viewfinder even though shooting in Live View mode.

MOVIE-MAKING MARVEL



HYBRID CMOS AF II

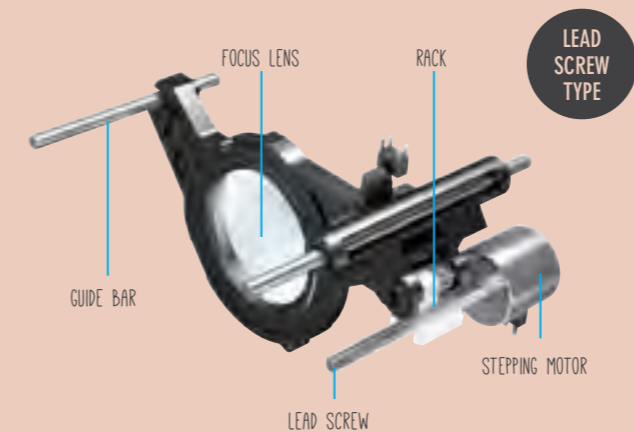
The latest Hybrid CMOS AF II sensor now comes with wider focus area covering approximately 80% of the width and height of the CMOS sensor. Due to a wider focus area, the Hybrid CMOS AF II sensor is capable of high-speed AF performance in Live View- and movie-shooting. It is no longer necessary to keep the subject in the center of the frame when focusing.



STEPPING MOTOR (STM) TECHNOLOGY

Designed to draw out the best of EOS Movie recording in Full HD, the new STM lenses are equipped with Canon's new Stepping Motor technology, which allows the lens to auto focus smoothly and silently. When used together with the Movie Servo AF feature, STM lenses enable the EOS 100D to achieve smooth continuous AF in tracking subjects during movie-shooting.

The ideal combination of size and weight with a decent focal length for beginners, the EF-S18-55mm f/3.5 - 5.6 IS STM is a standard kit lens that comes with the EOS 100D. For capturing both wide landscapes and close-ups, photographers may consider the EF-S18-135mm f/3.5 - 5.6 IS STM that capably handles wide-angle or telephoto photography and movie-shooting.

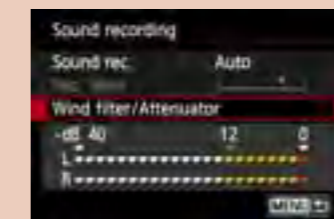


BUILT-IN MICROPHONE

Sound is recorded by an internal 16-bit monaural microphone at a sampling frequency of 48 kHz. The volume is adjusted either automatically or manually to one of 64 levels, while an attenuator reduces distortion of loud sounds. When paired with an STM lens, the operating sound of the camera and lens noise is greatly reduced to avoid being recorded.

QUICK TIP!

Try not to fiddle about with the camera buttons and dial as it may result in unwanted sounds being recorded while movie-shooting.



EOS MOVIE

Highlights in the reel of life are accurately and beautifully recorded in Full HD Video at 1920 x 1080 resolution using EOS Movie. Even at high ISO speeds, the moiré effect is significantly reduced, and the resulting footage displays low noise. The EOS 100D records frame rates of 30, 25 and 24 fps at Full HD resolution, with 60 and 50 fps available at 720p resolution.

Aided by the latest Hybrid CMOS Sensor AF II, STM lenses are able to improve on the performance of the existing EOS Movie features, and ensure faster, smoother, and quieter auto-focusing, and better continuous tracking of moving subjects while shooting.

QUICK TIP!

Always begin recording the scene before any action starts, as this leaves room for a few seconds in the beginning to help with editing.



WITH MOIRÉ EFFECT



WITHOUT MOIRÉ EFFECT

VIDEO SNAPSHOT

Add variety to ordinary movie-shooting with Video Snapshot by capturing short video clips that are two, four or eight seconds long. Without having to use a computer, these short clips can be strung and re-ordered together into a Video Snapshot Album, which can be played back with background music. This album contains short clips of the same shooting duration.

Video clips can be edited, re-ordered or deleted using Video Snapshot Task, in addition to other types of editing. As each clip is quite short in length, scenes will change or vary often, thus resulting in an interesting and quick-paced movie that appears to be professionally edited.

PLAYBACK & EDITING

Movie footage on the EOS 100D can be played back by connecting the camera to a television via a HDMI or AV cable, viewing through its LCD monitor, or playing the movie on a computer. Playback volume is adjustable to one of 11 levels. During editing, the first and last scenes can be deleted in 1-second increments, and saved over the original file or under a new file name.



CREATIVITY UNLEASHED



CREATIVE FILTERS

MINIATURE EFFECT MOVIE

Now the great fun of Creative Filters is introduced to movie-shooting! This popular effect is now applicable to movies to create a fantastic diorama world. Recording speeds come in 5x, 10x, and 20x.



NEW!



ART BOLD

Contrast and saturation are boosted for a bold three-dimensional effect resembling an oil painting. Levels for contrast and saturation are adjustable.



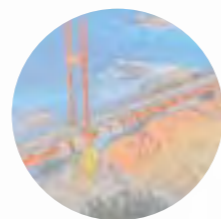
MINIATURE

A selected area is set to look sharper than surrounding blurred areas to imitate a tilt-shift lens effect. Contrast and colors can be increased for more impact.



GRAINY B/W

Grain is added to the image and turned into a monochrome shot for a high-contrast classic film-like effect. Contrast can be tweaked for more dramatic results.



WATER PAINTING

Colors are lightened and desaturated for a watercolor-painting effect with soft tones. Color density can be tweaked for a stronger or gentler impression.



FISH-EYE

A barrel-type distortion is created to curve the horizon and other straight lines within the image to mimic a fish-eye lens effect.



SOFT FOCUS

Blur is added to the image for a soft focus look and to create a dreamy effect that is desirable especially when shooting portraits.



TOY CAMERA

The edges of the image is darkened for a vignette effect, and color cast is adjustable to impart a grainy toy camera film-vibe.

SHOOTING WITH MODE DIAL

Catering to the needs of photographers at varying skill levels, the EOS 100D's Mode Dial separates all its shooting modes into the Basic Zone and the Creative Zone. Beginning at Basic Zone starts photographers off easy with the camera assisting in shooting while exploring creative possibilities. Scene Intelligent Auto, Creative Auto, Portrait, Landscape, Close-up, Sports, and Special Scene modes all can be found under the Basic Zone.



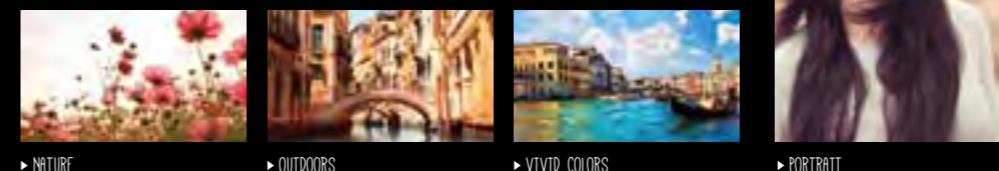
For photographers pursuing greater challenges, switch to Creative Zone that provides greater flexibility over shoot settings with the preset modes as a starting point. Modes found under the Creative Zone are Program AE (P), Shutter-priority AE (Tv), Aperture-priority AE (Av), and Manual exposure.

QUICK TIP!

Gain more confidence in your photography by shooting in Tv, Av or Manual Exposure modes in order to learn the co-relation between shutter speed, aperture and ISO speed.

SCENE INTELLIGENT AUTO

Fully automatic Scene Intelligent Auto mode serves as an easy and encouraging way for learning photographers to shoot outstanding images while the EOS 100D does the guesswork to achieve optimal exposure, affording photographers the freedom to compose and frame scenes. Scene Intelligent Auto uses the EOS Scene Detection System to read the scene and adjust settings appropriately for color, contrast, and lighting.



CREATIVE AUTO

Shooting in Creative Auto gives photographers more free rein with creative control over flash firing, background blur, drive mode selection, image recording quality, and Picture Style settings.



▶ CLOSE-UP



▶ PORTRAIT



▶ SPORTS

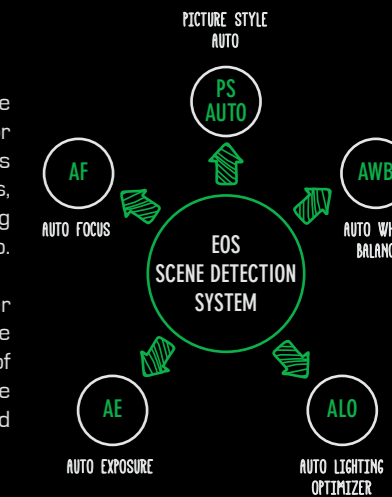


▶ LANDSCAPE

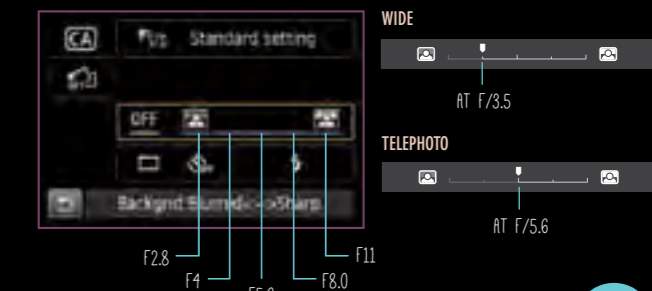
EOS SCENE DETECTION SYSTEM

The EOS Scene Detection System is the brain behind the operation when it comes to reading and analyzing a scene for relevant information while shooting with the EOS 100D. This intelligent system automatically analyzes faces, color, brightness, movement, contrast and distance in the scene, before providing feedback to features like Scene Intelligent Auto and Creative Auto.

Images of human subjects are typically adjusted for better brightness and more natural skin tones, whereas nature landscapes or outdoor images will have increased saturation of blues and greens. The system also controls lighting and exposure in dark/light scenes, images with overexposed highlights, and backlit images.



One of the pleasures of shooting with a DSLR camera is creating images with beautifully soft and out-of-focus background to draw attention to the main subject. New to the EOS 100D is the Background Blur Simulation with preview effect to produce a realistic blurred or sharpened background.



Another new feature available in the Creative Auto mode is the Effect Shot in both Live View and viewfinder shooting. Photographers can select any of the 19 different settings from Picture Styles, Basic+ effects or Creative Filters to capture two shots; one with effect and one without effect. The two shots can be captured at the same time and saved. This allows greater room for experimenting with various filters and effects that usually go unnoticed in normal shooting.



WITHOUT EFFECT



WITH SELECTED EFFECT (MONOCHROME)



SPECIAL SCENE MODE

In one of the most creative and expressive DSLR cameras ever, the Special Scene mode now features the new Kids scene, Food scene, and Candlelight scene. Along with the existing modes, these three new shooting scenes enhances different types of scenes while photographers just focus on composing.

NIGHT PORTRAIT

When shooting human subjects in night scenes, the camera activates flash automatically to light up the subject evenly. Shutter speed is slowed down for longer exposure to capture surrounding lights for a beautifully lit night portrait with plenty of details.



WITHOUT NIGHT PORTRAIT WITH NIGHT PORTRAIT

KIDS

Using high-speed shutter control to accurately capture quick-paced children in action, this mode produces non-blurry images with natural and healthy skin tones. Flash is automatically activated at slower shutter speeds.



FOOD

The vivid colors of garnishes and finely detailed textures of food is brought to prominence in this mode. No flash is set but can be activated when necessary.



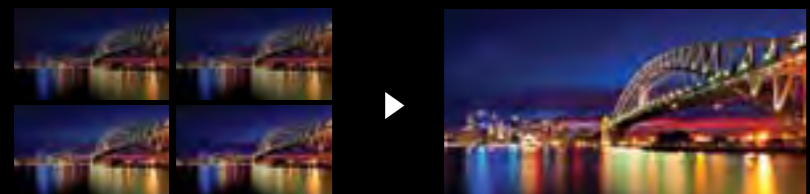
CANDELIGHT

Accurately depict the warm flickering glow of candle-lit scenes by reducing exposure fluctuation that usually occurs with candle flames. Red tint control is possible in this mode to tweak the warmth of the image.



HANDHELD NIGHT SCENE

In this mode, by shooting and combining four consecutive shots at a fast shutter speed, camera shake caused by handheld shooting in low-lit environments can be avoided. This ensures nightscapes are captured with bright highlights and no loss of details in shadowy areas.



HDR BACKLIGHT CONTROL

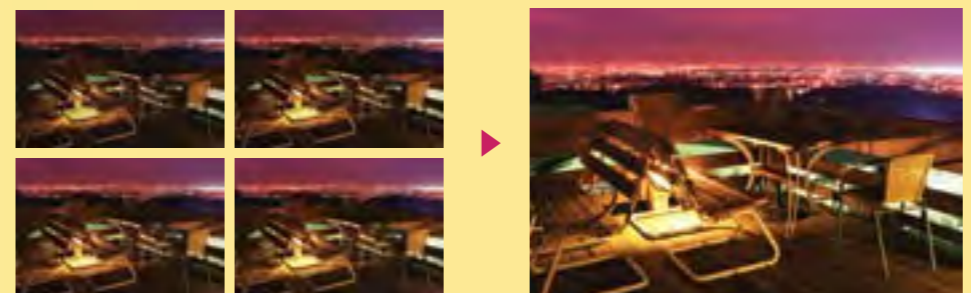
The camera shoots three shots in rapid succession at different levels of underexposed, standard, and overexposed. Combining these exposures will result in an image with fine details in both highlight and shadowed areas, ensuring that backlit subjects are properly exposed.



OVEREXPOSED SHOT STANDARD EXPOSURE SHOT UNDEREXPOSED SHOT FINAL MERGED IMAGE

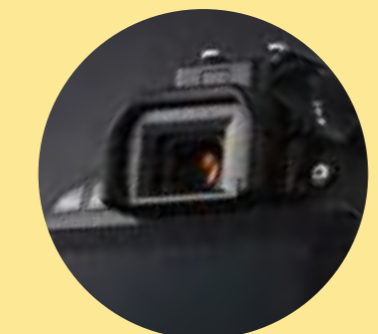
MULTI SHOT NOISE REDUCTION

Capture beautiful high-quality images even at high ISO speeds with the Multi Shot Noise Reduction function. With one release of the shutter, four images are shot in rapid succession and then superimposed for a final image with sharp definition and drastically reduced noise. This function is best recommended for handheld shooting since the shots are automatically aligned for reduced blurring.



SILENT SHOOTING

In situations where absolute silence is a must, the EOS 100D is the first of its class to feature silent shooting capabilities. This function is typically employed in concerts and recitals, or even for tripod shooting when mirror action needs to be minimal, in order to minimize blur caused by the reflex action of the mirror. The result is super sharp and highly detailed images.

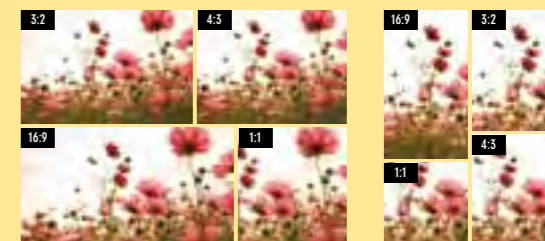


Through the viewfinder, silent shooting with an approximate shutter speed of 2.5fps is achieved by eliminating the sound of mirror action when the shutter is released. Using viewfinder shooting rather than Live View reduces the possibility of the camera's bright LCD monitor distracting other people, especially at events.



IN-CAMERA IMAGE CROPPING

This handy creative feature allows photographers to crop and save images without the hassle of a computer. Captured photos can now be cropped at selected angles and aspect ratios, right on the LCD monitor itself.

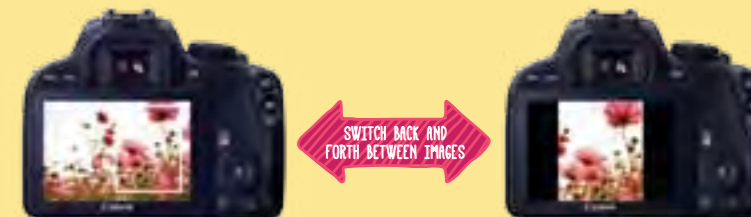


HORIZONTAL ASPECT RATIO SELECTION VERTICAL ASPECT RATIO SELECTION

QUICK TIP!

To draw more attention to your main subject, you can crop out the surrounding background to create more impact, especially in portraits.

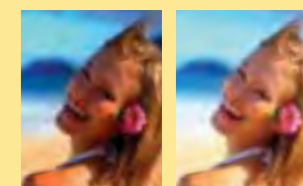
Furthermore, even after cropping, images retain a high level of rich detail yielded by the EOS 100D's high resolution 18-megapixel sensor. Cropped images can further be saved as new separate files.



SWITCH BACK AND FORTH BETWEEN IMAGES

Auto Lighting Optimizer

The Auto Lighting Optimizer gathers feedback from the EOS Scene Detection System to analyze the scene and selectively tweak the brightness and contrast for a balanced result. In backlit conditions, Auto Lighting Optimizer detects the subject's face and compensate for its brightness to ensure a more pleasing image without loss of details in shadowy areas.



WITHOUT AUTO LIGHTING OPTIMIZER WITH AUTO LIGHTING OPTIMIZER

Highlight Tone Priority

In Highlight Tone Priority, the dynamic range of highlight tones is expanded for smoother tonal gradation and more natural color reproduction. The gradation between greys and highlights are improved to correct overexposed areas of the image, reduce loss of details in highlights, and prevent the image from appearing washed out, especially if there are plenty of whites.



WITHOUT HIGHLIGHT TONE PRIORITY WITH HIGHLIGHT TONE PRIORITY

DYNAMICS AT WORK

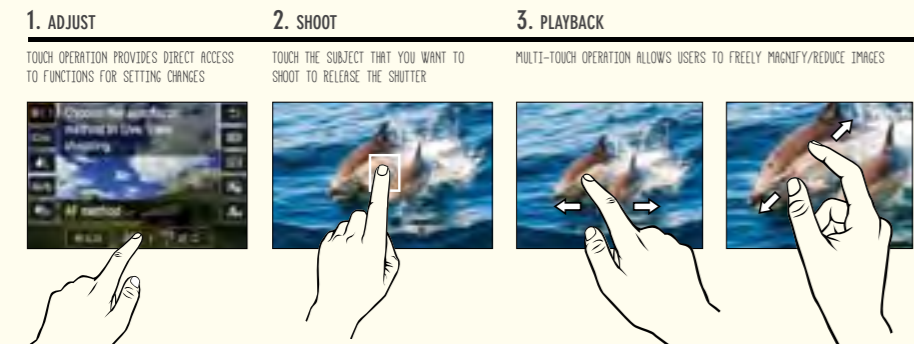


3.0-INCH WIDE CLEAR VIEW LCD II MONITOR WITH TOUCH INTERFACE

Easy on the eyes even in bright environments, bring the EOS 100D outdoors with its 3.0-inch Wide Clear View LCD II monitor that is bolstered by an approximately 1.04 million dot-resolution, low power consumption and faithful color reproduction. This LCD monitor adopts a Wide 3:2 aspect ratio for full screen display of images.

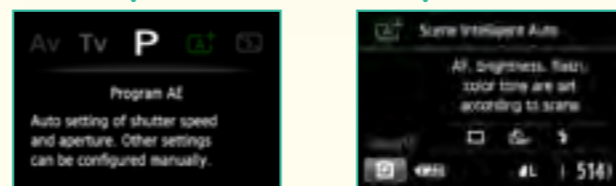


Intuitive handling of the EOS 100D is encouraged by the electrostatic Touch Panel ability of the LCD monitor. Photographers can easily shoot, play back and adjust camera settings with just the touch of a finger. Coated for smudge-resistance, simply swipe, drag, pinch to zoom in or out with ease.



SUPER HANDY FEATURE GUIDE

Lending a helping hand to photographers of all skill levels, this useful function provides easy and simple explanations of every feature and function in the EOS 100D. Keep it "On" for quick support and assistance on the camera's various features, and once familiar with the camera's workings, simply turn it "Off".



QUICK TIP!

Explore all the features and functions of the EOS 100D often and experiment with settings to broaden your photography know-how.

LIGHTWEIGHT BUILD

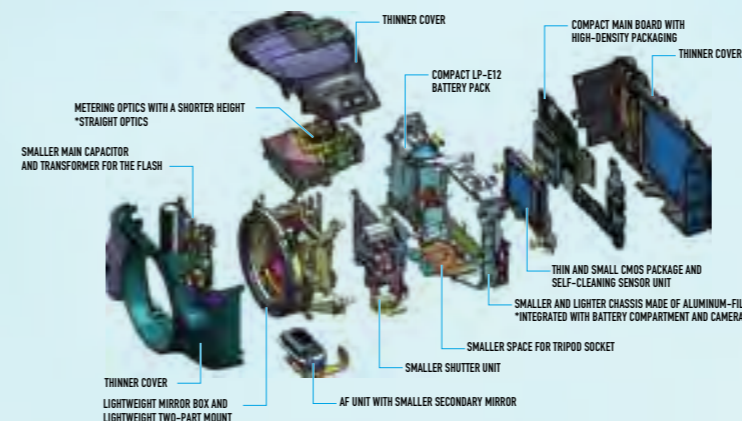
World's
Smallest &
Lightest DSLR*

WORLD'S SMALLEST AND LIGHTEST DSLR CAMERA*



The EOS 100D takes the crown as the latest camera to be the world's smallest and lightest DSLR camera* without compromising on either shooting performance or ease of operation. The EOS 100D weighs in at approximately 370g, and measures 116.8mm in width, 90.7mm in height and 69.4mm in depth.

This proud achievement came through a clever combination of aluminium alloy and polycarbonate with glass fibers to form the housing of the camera. Despite a more compact and lightweight build, the EOS 100D feels comfortable to hold and operate with its fluid curved form and confident grip.



* Among the digital SLR camera which mounts the APS-C size equivalent sensor. Date of issue: 1st March 2013, Canon's research.



Topping off its appealing design and easy operability, the camera is also fitted with a number of new and advanced features such as a high-powered viewfinder, built-in flash, monaural microphone and a full 360°-rotating Mode Dial.





EF-S18-55mm f/3.5 - 5.6 IS STM NEW!

The EF-S18-55mm f/3.5 - 5.6 IS STM is an excellent compact and lightweight standard zoom lens with a construction of one high-precision aspherical lens for high contrast and high-resolution image quality. Equipped with the new STM focusing mechanism, this versatile kit lens is designed to meet the needs of movie-shooting enthusiasts for super smooth and very quiet auto-focusing in Movie Servo AF.

Maximum magnification has been increased from 0.34x to 0.36x at the telephoto end, with the same minimum focusing distance of 0.25 meters. Image Stabilizer (IS) on the lens further gives it a significant effect equivalent of up to four stops faster.

Besides high-speed silent auto-focusing, the EF-S18-55mm f/3.5 - 5.6 IS STM uses a 7-blade circular aperture for exquisite soft-toned images, and its lens disposition and coatings are optimized for reduced ghosting and flare.



SOFT-TONED IMAGES



MAGNIFICATION



REDUCED GHOSTING AND FLARE



EF-S18-135mm f/3.5 - 5.6 IS STM

One of the very first lenses to feature the latest STM technology, the EF-S18-135mm f/3.5 - 5.6 IS STM is a high-performance standard telephoto lens that features constantly high resolution through its focal range by using one UD lens element and one PMO aspherical lens element.

A stepping motor (STM) focusing mechanism and new 6-group zoom system allows for very smooth, speedy and near-silent focusing, especially while shooting with Movie Servo AF. The Image Stabilizer (IS) feature achieves the equivalent shutter speed of up to four stops faster. Dynamic IS provides a greater correction range for camera shake caused by handheld movie-shooting.

The EF-S18-135mm f/3.5 - 5.6 IS STM is capable of shooting subjects up close with a minimum focusing distance of 0.39 meters throughout its zoom range and a maximum magnification of 0.28.



GPS RECEIVER GP-E2

The photographic adventure goes off-road with the GPS Receiver GP-E2, a lightweight travel companion that provides location data and time functions to help track and manage recorded images. Besides tagging GPS information to images and logging positional data, the GPS Receiver GP-E2 also functions as an electronic compass. Built to withstand the rigours of travel, this essential accessory is dust- and drip-proof, and directly connects to the EOS 100D for ease of use.

CONVENIENT

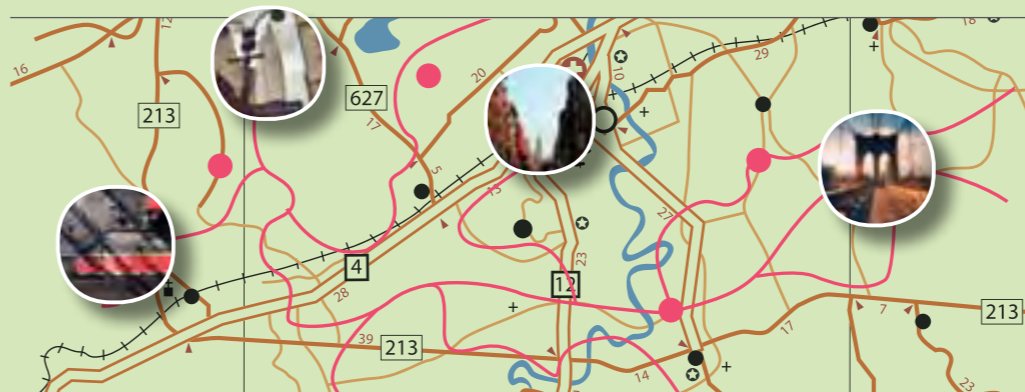
CAN BE ATTACHED TO THE CAMERA'S HOT SHOE

DUST-PROOF AND DRIP-PROOF

EXCELLENT FOR OUTDOOR USE

USES AA BATTERIES

AA BATTERIES ARE EASY TO OBTAIN, PROVIDING ADDED REASSURANCE



Speedlite 270EX II

A compact and powerful flash unit, the Speedlite 270EX II is a flexible flash unit that fits easily into any kit bag while still packing a lot of flash power. It has a guide power of 27 (m) at ISO 100, which makes it useful in long-range photography.

The Speedlite 270EX II is able to trigger the camera using the flash unit from up to 5 meters away. For versatile shooting under different conditions, this flash unit has an adjustable zoom head to match the Speedlite 270EX II's coverage to a lens' angle of view of either Tele setting at 50mm or Wide setting at 28mm.



Speedlite 90EX

Compact and lightweight in size and build, the Speedlite 90EX is the ideal flash unit companion to the EOS 100D for an easy-to-carry shooting kit. This resourceful flash unit is capable of quick-draw and discreet flash shooting, and supports wide-angle lenses up to 15mm.

EOS 100D NOMENCLATURE

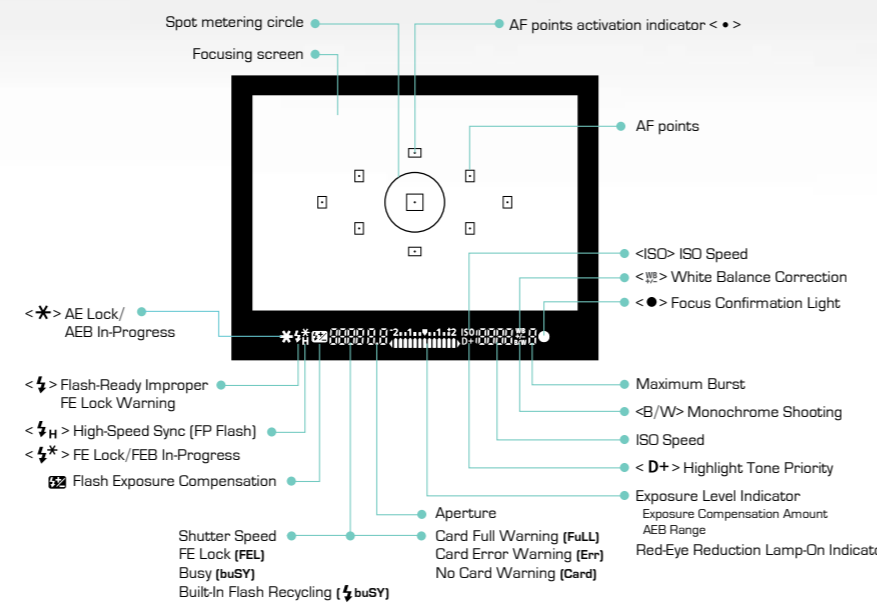


- Hot shoe
- Mode dial
- Main dial
- ISO speed setting button
- Shutter button
- Grip
- Remote control sensor
- Flash-sync contacts
- Built-in flash/AF-assist beam
- Focal plane mark
- Speaker
- Microphone (monaural)
- Strap mount
- Red-eye reduction/Self-timer lamp
- Flash button
- Lens release button
- Depth-of-field preview button



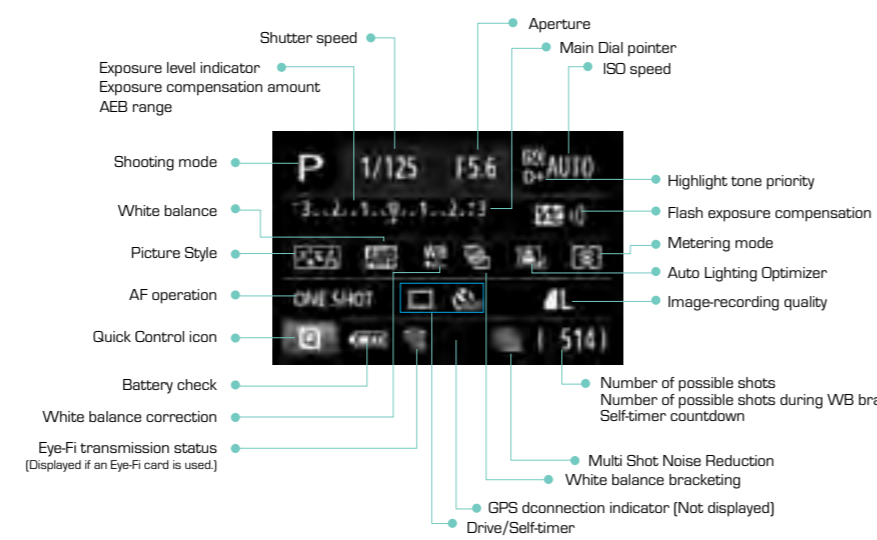
- Display off sensor
- Viewfinder eyepiece
- Menu button
- Info. button
- LCD monitor/Touch screen
- Playback button
- Erase button
- Live View shooting/Movie shooting button
- Power switch
- Movie shooting mode
- Strap mount
- AF point selection/Magnify button
- AE lock/FE lock button/Index/Reduce button
- Aperture/Exposure compensation button
- Quick Control/Setting button
- Cross keys
- DC cord hole
- Access lamp

VIEWFINDER INFORMATION



- Spot metering circle
- Focusing screen
- AF points activation indicator < * >
- AF points
- < * > AE Lock/AEB In-Progress
- < H > High-Speed Sync (FP Flash)
- < H * > FE Lock/FEB In-Progress
- Flash Exposure Compensation
- Shutter Speed FE Lock (FEL)
- Busy (buSY)
- Built-In Flash Recycling (buSY)
- AF points activation indicator < * >
- AF points
- < ISO > ISO Speed
- < WB > White Balance Correction
- < C > Focus Confirmation Light
- Maximum Burst
- < B/W > Monochrome Shooting
- ISO Speed
- < D > Highlight Tone Priority
- Exposure Level Indicator
- Exposure Compensation Amount
- AEB Range
- Red-Eye Reduction Lamp-On Indicator
- Aperture
- Card Full Warning (Full)
- Card Error Warning (Err)
- No Card Warning (Card)

SHOOTING SETTINGS DISPLAY



- Shutter speed
- Aperture
- Main Dial pointer
- ISO speed
- Exposure level indicator
- Exposure compensation amount
- AEB range
- Shooting mode
- White balance
- Picture Style
- AF operation
- Quick Control icon
- Battery check
- White balance correction
- Eye-Fi transmission status (Displayed if an Eye-Fi card is used)
- Highlight tone priority
- Flash exposure compensation
- Metering mode
- Auto Lighting Optimizer
- Image-recording quality
- Number of possible shots
- Number of possible shots during WB bracketing
- Self-timer countdown
- Multi Shot Noise Reduction
- White balance bracketing
- GPS connection indicator (Not displayed)
- Drive/Self-timer

SPECIFICATIONS

TYPE	Digital, single-lens reflex, AF/AE camera with built-in flash
Recording media:	SD memory card, SDHC memory card, SDXC memory card
Image sensor size:	Approx. 22.3 x 14.9 mm
Compatible lenses:	* Compatible with UHS-I Canon EF lenses (including EF-S lenses) * Excluding EF-M lenses (35 mm-equivalent focal length is approx. 1.6 times the lens focal length) Canon EF mount
Lens mount:	Canon EF mount

IMAGE SENSOR	CMOS sensor
Type:	Approx. 18.0 megapixels
Effective pixels:	3.2
Aspect ratio:	Auto, Manual, Dust Delete Data appending
Dust delete feature:	

RECORDING SYSTEM	Design rule for Camera File System (DCF) 2.0
Recording format:	JPEG, RAW (14-bit Canon original)
Image type:	RAW+JPEG Large simultaneous recording possible
Recorded pixels:	L (Large) : Approx. 17.9 megapixels (5184 x 3456) M (Medium) : Approx. 8.0 megapixels (3456 x 2304) S1 (Small 1) : Approx. 4.5 megapixels (2592 x 1728) S2 (Small 2) : Approx. 2.5 megapixels (1920 x 1280) S3 (Small 3) : Approx. 350,000 pixels (720 x 480) RAW : Approx. 17.9 megapixels (5184 x 3456)

IMAGE PROCESSING DURING SHOOTING	Auto, Standard, Portrait, Landscape, Neutral, Faithful, Monochrome, User Def. 1 - 3
Picture Style:	Ambience-based shots, Light/scene-based shots
Basic:	Possible (in <C>A mode)
Extra Effect Shot:	Auto, Preset (Daylight, Shade, Cloudy, Tungsten light, White fluorescent light, Flash), Custom White Balance correction and White balance bracketing possible
White balance:	* Flash color temperature information transmission enabled Applicable to long exposures and high ISO speed shots
Noise reduction:	Auto Lighting Optimizer
Automatic image brightness correction:	Provided
Highlight tone priority:	Provided
Lens aberration correction:	Peripheral illumination correction, Chromatic aberration correction

VIEWFINDER	Eye-level pentamirror
Type:	Coverage: Vertical/horizontal approx. 95% (with Eye point approx. 19 mm)
Coverage:	Magnification: Approx. 0.87x (-1 m ⁻¹ with 50mm lens at infinity)
Magnification:	Eye point: Approx. 19 mm (from eyepiece lens center at -1 m ⁻¹)
Eye point:	Built-in diopter adjustment: Approx. -3.0 - +1.0 m ⁻¹ (dpt)
Built-in diopter adjustment:	Focusing screen: Fixed, Precision Matte
Focusing screen:	Mirror: Quick-return type
Mirror:	Depth-of-field preview: Provided
Depth-of-field preview:	

AUTOFOCUS	TTL secondary image-registration, phase detection
Type:	Coverage: Vertical/horizontal approx. 95% (with Eye point approx. 19 mm)
Coverage:	Magnification: Approx. 0.87x (-1 m ⁻¹ with 50mm lens at infinity)
Magnification:	Eye point: Approx. 19 mm (from eyepiece lens center at -1 m ⁻¹)
Eye point:	Built-in diopter adjustment: Approx. -3.0 - +1.0 m ⁻¹ (dpt)
Built-in diopter adjustment:	Focusing screen: Fixed, Precision Matte
Focusing screen:	Mirror: Quick-return type
Mirror:	Depth-of-field preview: Provided
Depth-of-field preview:	

EXPOSURE CONTROL	63-zone TTL full-aperture metering
Metering modes:	• Evaluative metering (linked to all AF points) • Partial metering (approx. 9% of viewfinder at center) • Spot metering (approx. 4% of viewfinder at center) • Center-weighted average metering
Metering brightness range:	EV 1 - 20 (at room temperature with EF50mm f1.8 lens, ISO 100)
Metering brightness range:	Program AE (Scene Intelligent Auto, Flash Off, Creative Auto, Portrait, Landscape, Close-up, Sports, Special scene modes (Kids, Food, Candlelight, Night Portrait, Handheld Night Scene, HDR Backlight Control), Program), Shutter-priority AE, Aperture-priority AE, Manual exposure
Exposure control:	Basic Zone modes*: ISO 100 - ISO 6400 set automatically * Landscape: ISO 100 - 1600 set automatically, Handheld Night Scene: ISO 100 - ISO 12800 Creative Zone modes: ISO 100 - ISO 12800 set manually (whole-stop increments), ISO 100 - ISO 6400 set automatically, maximum ISO speed settable for ISO Auto, or ISO expansion to "H" (equivalent to ISO 25600)
ISO speed:	Manual: ±5 stops in 1/3- or 1/2-stop increments
Recommended exposure index:	AEB: ±2 stops in 1/3- or 1/2-stop increments (can be combined with manual exposure compensation)
Exposure compensation:	Auto: Applied in One-Shot AF mode with evaluative metering when focus is achieved
AE lock:	Manual: By AE lock button

SHUTTER	Electronically-controlled, focal-plane shutter
Type:	Shutter speeds: 1/4000 sec. to 30 sec. (Total shutter speed range. Available range varies by shooting mode.), Bulb, X-sync at 1/200 sec.
Shutter speeds:	

FLASH	Retractable, auto pop-up flash
Built-in flash:	Guide No.: Approx. 9.4/30.8 (ISO 100, in meters/feet)
Flash coverage:	Approx. 18mm lens angle of view
Recycling time:	Approx. 3 sec.
External flash:	EX-series Speedlite (Flash functions settable with the camera)
Flash metering:	E-TTL II autofocus
Flash exposure compensation:	±2 stops in 1/3- or 1/2-stop increments
FE lock:	Provided
PO terminal:	None

DRIVE SYSTEM	Single shooting, Continuous shooting, Silent single shooting, Silent continuous shooting, Self-timer with 10-sec. or 2-sec. delay and 10-sec. delay with continuous shooting
Drive modes:	Continuous shooting: Max. approx. 4 shots/sec. Silent continuous shooting: Max. approx. 2.5 shots/sec. Max. burst (Approx.): JPEG Large/Fine: 28 (1140) shots RAW: 7 (8) shots RAW+JPEG Large/Fine: 4 (4) shots
Continuous shooting speed:	* Figures in parentheses apply to an UHS-I compatible 8 GB card based on Canon's testing standards
Max. burst (Approx.):	* Figures are based on Canon's testing standards (ISO 100 and Standard Picture Style) using an 8 GB card

LIVE VIEW SHOOTING	Aspect ratio settings: 3.2, 4.3, 16.9, 1:1
Aspect ratio settings:	Hybrid CMOS AF II System* (Face+Tracking, FlexiZone-Multi, FlexiZone-Single), Phase-difference detection (Quick mode)
Focus methods:	Manual focus (approx. 5x / 10x magnification possible) * Focusing brightness range: EV 1 - 18 (at room temperature, ISO 100)
Continuous AF:	Provided
Touch shutter:	Provided
Metering modes:	Real-time metering with image sensor Evaluative metering (315 zones), Partial metering (approx. 10% of Live View screen), Spot metering (approx. 2.6% of Live View screen), Center-weighted average metering (approx. 2.6% of Live View screen)
Metering brightness range:	EV 0 - 20 (at room temperature with EF50mm f1.4 USM lens, ISO 100)
Creative filter:	Grainy B/W, Soft focus, Fish-eye effect, Art bold effect, Water painting effect, Toy camera effect, Miniature effect
Grid display:	Two types

MOVIE SHOOTING	Recording format: MOV
Recording format:	Movie: MPEG-4 AVC/H.264
Movie:	Variable (average) bit rate
Audio:	Linear PCM
1920x1080 (Full HD) : 30p/25p/24p	
1280x720 (HD) : 60p/50p	
640x480 (SD) : 30p/25p	
* 30p: 29.97 fps, 25p: 25.00 fps, 24p: 23.98 fps, 60p: 59.94 fps, 50p: 50.00 fps	
1920x1080 (30p/25p/24p) : Approx. 330 MB/min.	
1280x720 (60p/50p) : Approx. 330 MB/min.	
640x480 (30p/25p) : Approx. 82.5 MB/min.	
Hybrid CMOS AF II System* (Face+Tracking, FlexiZone-Multi, FlexiZone-Single)	
Manual focus (approx. 5x / 10x magnification possible)	
* Focusing brightness range: EV 1 - 18 (at room temperature, ISO 100)	
Center-weighted average and evaluative metering with the image sensor	
* Automatically set by the focusing mode	
Servo AF:	Provided
Metering brightness range:	EV 0 - 20 (at room temperature with EF50mm f1.4 USM lens, ISO 100)
Exposure compensation:	±3 stops in 1/3-stop increments (Still photos: ±5 stops)
ISO speed:	With autoexposure shooting: ISO 100 - ISO 6400 set automatically
Video snapshots:	With manual exposure: ISO 100 - ISO 6400 set automatically
Miniature effect movie:	Settable to 2 sec./4 sec./8 sec.
Sound recording:	Possible
Grid display:	Built-in monaural microphone
External stereo microphone terminal provided	
Sound-recording level adjustable, wind filter provided, attenuator provided	
Two types	

LCD MONITOR	TFT color liquid-crystal monitor
Type:	Monitor size and dots: Wide, 7.7 cm (3.0 in.) (3.2) with approx. 1.04 million dots
Brightness adjustment:	Manual (7 levels)
Interface languages:	25
Touch screen technology:	Capacitive sensing
Feature guide:	Displayable

PLAYBACK	Image display formats: Single image display, Single image + Info display (Basic info, shooting info, histogram), image index (4/9/36/100)
Image display formats:	Zoom magnification: Approx. 1.5x - 10x
Zoom magnification:	Highlight alert: Overexposed highlights blink
Highlight alert:	Image browsing methods: Single image, jump by 10 or 100 images, by shooting date, by folder, by movies, by stills, by rating
Image browsing methods:	

Image rotate:	Possible
Movie playback:	Enabled (LCD monitor, video/audio OUT, HDMI OUT)
Image protect:	Flash-in speaker
Slide show:	Possible
Background music:	All images, by date, by folder, by movies, by stills, by rating
Post-processing of images:	Flash exposure effects selectable
Post-processing of images:	Selectable for slide shows and movie playback

POST-PROCESSING OF IMAGES	Creative filters: Grainy B/W, Soft focus, Fish-eye effect, Art bold effect, Water painting effect, Toy camera effect, Miniature effect
Resize:	Possible
Cropping:	Possible
DIRECT PRINTING	Compatible printers: PictBridge-compatible printers
Printable images:	JPEG and RAW images
Print ordering:	DPOF Version 1.1 compatible

CUSTOM FUNCTIONS	Custom Functions: 8
My Menu registration:	8
Copyright information:	Possible
Interface:	Audio/video OUT/Digital terminal: Analog video (compatible with NTSC/PAL)/stereo audio output
External microphone IN terminal:	Computer communication, Direct printing (Hi-Speed USB equivalent), GPS Receiver GP-E2 connection
Remote control terminal:	Type C (Auto switching of resolution), CEC-compatible
Wireless remote control:	3.5 mm diameter stereo mini-jack
Eye-Fi card:	For Remote Switch RS-60E3
Compatible with Remote Controller RC-6	

POWER	Battery: Battery Pack LP-E12 (Quantity 1)
Battery:	* AC power can be supplied via AC Adapter Kit ACK-E15
Number of possible shots:	With viewfinder shooting: Approx. 380 shots at room temperature (23°C/73°F), approx. 350 shots at low temperatures (0°C/32°F)
Movie shooting time:	With Live View shooting: Approx. 150 shots at room temperature (23°C/73°F), approx. 140 shots at low temperatures (0°C/32°F)
Movie shooting time:	Approx. 1 hr. 5 min. at room temperature (23°C/73°F)
Movie shooting time:	Approx. 1 hr. at low temperatures (0°C/32°F)
Movie shooting time:	(with a fully-charged Battery Pack LP-E12)

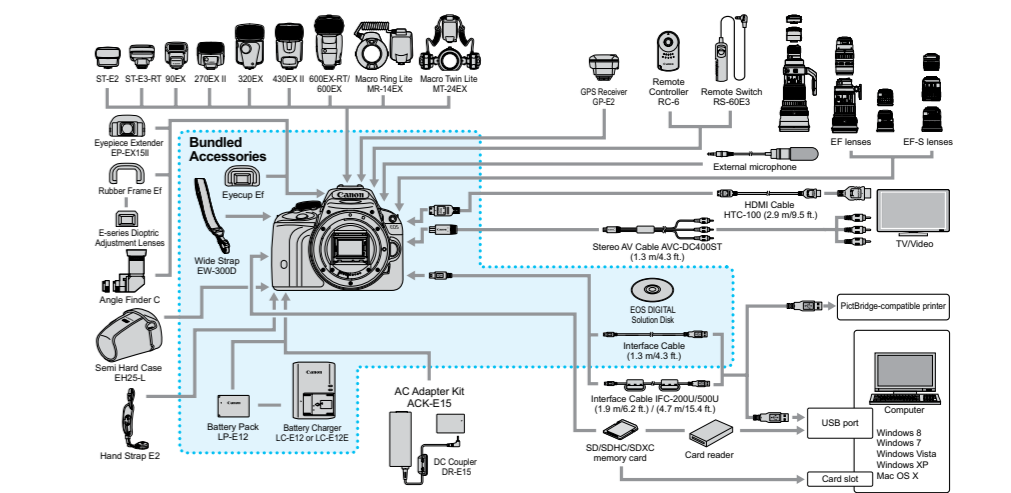
DIMENSIONS AND WEIGHT	Dimensions (W x H x D): Approx. 116.8 x 90.7 x 69.4 mm / 4.60 x 3.57 x 2.74 in.
Weight:	Approx. 407 g / 14.36 oz. (CIPA Guidelines), Approx. 370 g / 13.06 oz. (Body only)
OPERATION ENVIRONMENT	Working temperature range: 0°C - 40°C / 32°F - 104°F
Working humidity:	85% or less
BATTERY PACK LP-E12	Type: Rechargeable lithium-ion battery
Rated voltage:	7.2 V DC
Battery capacity:	875 mAh
Working temperature range:	During charging: 5°C - 40°C / 41°F - 104°F
Working humidity:	During shooting: 0°C - 40°C / 32°F - 104°F
Dimensions (W x H x D):	Approx. 32.5 x 12.5 x 48.5 mm / 1.3 x 0.49 x 1.9 in.
Weight:	Approx. 35 g / 1.2 oz.

BATTERY PACK LC-E12	Compatible battery: Battery Pack LP-E12
Recharging time:	Approx. 2 hours (at room temperature (23°C/73°F))
Rated input:	100 - 240 V AC (50/60 Hz)
Rated output:	8.4 V DC / 540 mA
Working temperature range:	5°C - 40°C / 41°F - 104°F
Working humidity:	85% or less
Dimensions (W x H x D):	Approx. 65 x 25.5 x 90 mm / 2.6 x 1.0 x 3.5 in.
Weight:	Approx. 81 g / 2.9 oz.

BATTERY PACK LC-E12E	Compatible battery: Battery Pack LP-E12
Recharging time:	Approx. 2 hours (at room temperature (23°C/73°F))
Rated input:	100 - 240 V AC (50/60 Hz)
Rated output:	8.4 V DC / 540 mA
Working temperature range:	5°C - 40°C / 41°F - 104°F
Working humidity:	85% or less
Dimensions (W x H x D):	Approx. 65 x 25.5 x 90 mm / 2.6 x 1.0 x 3.5 in. (excluding power cord)
Weight:	Approx. 76 g / 2.7 oz. (excluding power cord)

- All the data above is based on Canon's testing standards and CIPA (Camera & Imaging Products Association) testing standards and guidelines.
- Dimensions, maximum diameter, length and weight listed above are based on CIPA Guidelines (except weight for camera body only).
- Product specifications and the exterior are subject to change without notice.

SYSTEM CHART



* All cable lengths given are approximate figures.
* When using GPS, be sure to check the countries and areas of use, and use the device in accordance with the laws and regulations of the country or region.



**SOUTH & SOUTHEAST ASIA
REGIONAL HEADQUARTERS**

CANON SINGAPORE PTE. LTD.

1 HarbourFront Avenue,
#04-01 Keppel Bay Tower,
Singapore 098632

www.canon-asia.com

Errors and omissions excepted.
Images are simulated.
Weight and dimensions are approximate.
Subject to change without notice.
Macintosh is a trademark of Apple Computer Inc., registered in the
United States and other countries. Microsoft® and Windows® are
either registered trademarks or trademarks of Microsoft Corporation
in the United States and/or other countries. Wi-Fi is a trademark.
Other names and products not mentioned above may be registered
trademarks or trademarks of their respective companies. Canon is a
registered trademark of Canon Inc.

Warning: Unauthorized recording of copyrighted materials may infringe
on the rights of copyright owners and be contrary to copyright laws.

0174W898



Canon EOS Asia

www.canon-asia.com/eos100d

CANON OFFICES:

MALAYSIA

Canon Marketing (Malaysia) Sdn. Bhd.
Tel : 60-3-78446000
Fax : 60-3-78450505
www.canon.com.my

SINGAPORE

Canon Singapore Pte. Ltd.
Domestic Operations
Tel : 65-6799-8888
Fax : 65-6798-8882
www.canon.com.sg

THAILAND

Canon Marketing (Thailand) Co. Ltd.
Tel : 66-2-3449999
Fax : 66-2-3449988
www.canon.co.th

VIETNAM

Canon Marketing Vietnam Co. Ltd.
Ho Chi Minh City
Tel : 848-3820-0466
Fax : 848-3820-0477

Hanoi

Tel : 844-37711677
Fax : 844-37711678
www.canon.com.vn

CANON BUSINESS PARTNERS:

BANGLADESH

J.A.N. Associates Ltd.
Tel : 8802-9660601,
8802-8624292
Fax : 880-2-861-0410

BRUNEI

Interhouse Company
Tel : 673-2-653001
Fax : 673-2-653003

CAMBODIA

i-Click (Cambodia) Pte. Ltd.
Tel : 855-23-996638
Fax : 855-23-996639

INDONESIA

PT Datascrip
Canon Call Center
Tel : 021-2922-6000
Fax : 62-21-6544811 to 13
www.canon.co.id

MALDIVES

SIMDI Company Pvt. Ltd.
Tel : 960-3334421
Fax : 960-3334424

MYANMAR

Myanmar Golden Rock
International Co. Ltd.
Tel : 95-1-202092 to 96
Fax : 95-1-202079

NEPAL

Primax International Inc.
Tel : 977-1-4224079
Fax : 977-1-4429358

PAKISTAN

MBM
Tel : 92-21-32735322
Fax : 92-42-37530948

SRI LANKA

Metropolitan Computers (Pvt.) Ltd.
Tel : 94-114-700-200
Fax : 94-114-700-398